

Community Land Management Plan

For the Adelaide Park Lands

October 2023



CITY OF
ADELAIDE

ACKNOWLEDGEMENT OF COUNTRY

The City of Adelaide acknowledges that we are located on the traditional Country of the Kaurna people of the Adelaide Plains and pays respect to Elders past, present and emerging.

We recognise and respect their cultural heritage, beliefs and relationship with the land. We also extend that respect to visitors of other Aboriginal Language Groups and other First Nations.

DOCUMENT PROPERTIES

Contact for enquiries and proposed changes

If you have any questions regarding this document or if you have a suggestion for improvements, please contact:

Contact Officer: Jared Wilson
Title: Team Leader, Park Lands Planning
Program: Park Lands, Policy & Sustainability
Phone: (08) 8203 7199
Email: j.wilson@cityofadelaide.com.au

Record Details

HPRM Reference: ACC2023/23238
HPRM Container: 2021/00938

Version History

Version	Revision Date	Revised By	Revision Description
1.0	2 June 2022	MZ, MW, MC, DT	Draft for A/D review
1.1	7 June 2022	MZ, MW, MC, DT	Draft for Kadaltilla
1.2	9 June 2022	MZ, MW, MC, DT	Reviewed by A/D
1.3	22 June 2022	MZ, MW, MC, DT	Following legal advice
1.4	4 July 2022	MW, DT	Following legal advice
1.5	12 Jan 2023	MW	Reviewed by A/D
1.6	24 Feb 2023	MW	Following advice from Kadaltilla
1.7	3 August 2023	TR	Following stakeholder consultation
1.8	September 2023	JW	Following Council Committee Feedback and Workshop
1.9	12 October 2023		Endorsed for publication

Disclaimer

City of Adelaide has made every endeavour to ensure that the contents of this plan are accurate as at the date of publication. City of Adelaide must act to uphold and promote observance of the principles in [Section 8 of the Local Government Act 1999](#) in the performance of its roles and functions. As such, it reserves the right to periodically update supporting documents and information which inform this Community Land Management Plan in order for the Council to continue to observe those principles.

TABLE OF CONTENTS

ACKNOWLEDGEMENT OF COUNTRY	ii
Document Properties.....	ii
Introduction	1
Section 1: What is a Community Land Management Plan?	2
Section 2: About this Community Land Management Plan	2
Section 3: Identification details	3
Section 4: Setting the Context	5
Section 5: Overall Purpose for which the Adelaide Park Lands are Held	6
Section 6: Management Framework for the Adelaide Park Lands	7
Section 7: Key Legislation	8
Section 8: Key City of Adelaide Strategies, Policies and Plans.....	12
Section 9: Special Provisions Under Regulations	16
Section 10: Overarching Objectives, Targets and Measures for the Adelaide Park Lands....	16
Section 11: Park Specific Management	22
Annexure 1 – Possum Park / Pirtawardli (Park 1).....	23
Annexure 2 – Denise Norton Park / Pardipardinyilla (Park 2)	26
Annexure 3 – Yam Daisy Park / Kantarilla (Park 3)	29
Annexure 4 – Reservoir Park / Kangatilla (Park 4).....	31
Annexure 5 – Bragg Park / Ngampa Yarta (Park 5).....	33
Annexure 6 – Lefevre Park / Nantu Wama (Park 6).....	35
Annexure 7 – The Olive Groves / Kuntingga (Park 7) & The Olive Groves / Parngutilla (Park 8).....	37
Annexure 8 – Bunday’s Paddock / Tidlangga (Park 9).....	40
Annexure 9 – Bullrush Park / Warnpangga (Park 10)	42
Annexure 10 – Mistletoe Park / Tainmtilla (Park 11).....	44
Annexure 11 – Frome Park / Nellie Raminyemmerin	46
Annexure 12 – Red Gum Park / Karrawirra (Park 12).....	48
Annexure 13 – Rundle Park / Kadlitpina (Park 13).....	51
Annexure 14 – Rymill Park / Murlawirrapurka (Park 14)	53
Annexure 15 – King Rodney Park / Ityamai-Itpina (Park 15).....	55
Annexure 16 – Victoria Park / Pakapakanthi (Park 16).....	57
Annexure 17 – Carriageway Park / Tuthangga (Park 17).....	61
Annexure 18 – Peppermint Park / Wita Wirra (Park 18).....	64
Annexure 19 – Pelzer Park / Pityarilla (Park 19).....	66
Annexure 20 – Blue Gum Park / Kurangga (Park 20)	69
Annexure 21 – Veale Park / Walyu Yarta (Park 21).....	71
Annexure 22 – Golden Wattle Park / Mirnu Wirra (Park 21W)	74
Annexure 23 – Josie Aguis Park / Wikaparntu Wirra (Park 22).....	77
Annexure 24 – GS Kingston Park / Wirrarninthe (Park 23)	80
Annexure 25 – Ellis Park / Tampawardli (Park 24).....	83
Annexure 26 – Gladys Elphick Park / Narnungga (Park 25)	86
Annexure 27 – Tarntanya Wama (Park 26)	88
Annexure 28 – Bonython Park / Tulya Wardli (Park 27).....	91
Annexure 29 – Kate Cocks Park.....	95
Annexure 30 – Helen Mayo Park.....	97
Annexure 31 – John E Brown Park (Park 27A).....	99
Annexure 32 – Mary Lee Park (Park 27B).....	102
Annexure 33 – Palmer Gardens / Pangki Pangki (Park 28) & Brougham Gardens / Tantutitingga (Park 29).....	104
Annexure 34 – Victoria Square / Tarntanyangga	106
Annexure 35 – Hindmarsh Square / Mukata	109
Annexure 36 – Light Square / Wauwi	111
Annexure 37 – Hurtle Square / Tangkaira	113

Annexure 38 – Whitmore Square / Iparrityi.....	115
Annexure 39 – Wellington Square / Kudnartu.....	117
Annexure 40 – River Torrens / Karrawirra Pari.....	119
Appendix A – Principles from the Adelaide Park Lands Act 2005 (SA).....	121
Appendix B – National Heritage List Official Values.....	122
Appendix C – Likelihood of Impact of Works on the National Heritage Values.....	124

FIGURES & TABLES

Figure 1. Map of the Adelaide Park Lands to which this CLMP applies	4
Table 1. Summary of National Heritage Values – Adelaide Park Lands and City Layout	9
Table 2. The overarching objectives, targets and measures	16
Figure 3. Map of Possum Park / Pirltawardli (Park 1) (source: MetroMap Aerial Imagery 2023).....	24
Figure 4. Map of Denise Norton Park / Pardipardinyilla (Park 2) (source: MetroMap Aerial Imagery 2023).....	26
The Park will continue to meet the recreation and socialising needs of the community with wide open spaces surrounded by large shady trees and dense understorey vegetation within an open woodland character.	29
Figure 6. Map of Reservoir Park / Kangatilla (Park 4) (source: MetroMap Aerial Imagery 2023).....	31
Figure 7. Map of Bragg Park / Ngampa Yarta (Park 5) (source: MetroMap Aerial Imagery 2023).....	33
Figure 8. Map of Lefevre Park / Nantu Warna (Park 6) (source: MetroMap Aerial Imagery 2023).....	35
Figure 9. Map of The Olive Groves / Kuntingga (Park 7) and The Olive Groves / Parngutilla (Park 8) (source: MetroMap Aerial Imagery 2023).....	38
Figure 10. Map of Bunday’s Paddock / Tidlangga (Park 9) (source: MetroMap Aerial Imagery 2023).....	40
Figure 11. Map of Bullrush Park / Warnpangga (Park 10) (source: MetroMap Aerial Imagery 2023).....	42
The Park will continue to meet the wider recreational needs of the community and include enhancement of the biodiversity within the River Torrens / Karrawirra Pari corridor.	44
Figure 12. Map of Mistletoe Park / Tainmuntilla (Park 11) (source: MetroMap Aerial Imagery 2023).....	44
Figure 13. Map of Frome Park / Nellie Raminyemmerin (source: MetroMap Aerial Imagery 2023).....	46
Figure 14. Map of Red Gum Park / Karrawirra (Park 12) (source: MetroMap Aerial Imagery 2023).....	49
Figure 15. Map of Rundle Park / Kadlitpina (Park 13).....	51
Figure 16. Map of Rymill Park / Murlawirrapurka (Park 14) (source: MetroMap Aerial Imagery 2023).....	53
Figure 17. King Rodney Park / Ityamai-itpina (Park 15) (source: MetroMap Aerial Imagery 2023).....	55
Figure 18. Map of Victoria Park / Pakapakanthi (Park 16) (source: MetroMap Aerial Imagery 2023).....	58
Figure 19. Map of Carriageway Park / Tuthangga (Park 17) (source: MetroMap Aerial Imagery 2023).....	62
Figure 20. Map of Peppermint Park / Wita Wirra (Park 18) (source: MetroMap Aerial Imagery 2023).....	64
Figure 22. Map of Blue Gum Park / Kurangga (Park 20) (source: MetroMap Aerial Imagery 2023).....	69
Figure 23. Map of Veale Park / Wayu Yarta (Park 21) (source: MetroMap Aerial Imagery 2023).....	71

Community Land Management Plan

Figure 24. Map of Golden Wattle Park / Mirnu Wirra (Park 21W) (source: MetroMap Aerial Imagery 2023).....75

Figure 25. Map of Josie Agius Park / Wikaparntu Wirra (Park 23) (source: MetroMap Aerial Imagery 2023).....78

Figure 26. Map of GS Kingston Park / Wirraninthe (Park 23) (source: MetroMap Aerial Imagery 2023).....81

Figure 27. Map of Ellis Park / Tampawardli (Park 24) (source: MetroMap Aerial Imagery 2023).....84

Figure 28. Map of Gladys Elphick Park / Narnungga (Park 25) (source: MetroMap Aerial Imagery 2023).....86

Figure 29. Map of Elder Park, Pinky Flat and Barr Smith Walk (source: MetroMap Aerial Imagery 2023).....89

Figure 30. Map of Bonython Park / Tulya Wardli (Park 27) (source: MetroMap Aerial Imagery 2023).....92

Figure 32. Map of Helen Mayo Park (source: MetroMap Aerial Imagery 2023).....97

Figure 33. Map of John E Brown Park (Park 27A) (source: MetroMap Aerial Imagery 2023).....100

Figure 34. Map of Mary Lee Park (Park 27B) (source: MetroMap Aerial Imagery 2023)102

Figure 35. Map of Palmer Gardens / Pangki Pangki (Park 28 & Brougham Gardens / Tantutitingga (Park 29) (source: MetroMap Aerial Imagery 2023).....104

Figure 37. Map of Hindmarsh Square / Mukata (source: MetroMap Aerial Imagery 2023) ..109

Figure 38. Map of Light Square / Wauwi (source: MetroMap Aerial Imagery 2023)111

Figure 39. Map of Hurtle Square / Tangkaira (source: MetroMap Aerial Imagery 2023).....113

Figure 40. Map of Whitmore Square / Iparrityi (source: MetroMap Aerial Imagery 2023)....115

Figure 41. Map of Wellington Square / Kudnartu (source: MetroMap Aerial Imagery 2023)117

Figure 42. Map of the River Torrens / Karrawirra Pari (source: MetroMap Aerial Imagery 2023).....119

Figure A1.....125

National Heritage Listing boundary (prepared by the Department of Environment and Water 2018).....125

INTRODUCTION

Situated on the Adelaide Plains between the Mount Lofty Ranges and the Gulf St Vincent, Adelaide is located on Kurna Yarta (Kurna Country) and is the capital city of South Australia.

Planned in 1837 by Colonel William Light as part of his vision for Adelaide, the Adelaide Park Lands were set aside as an accessible natural open space landscape for the people of South Australia. The formal organisation, delineation and dedication of Adelaide Park Lands was a pioneering technical achievement.

Covering 760 hectares, the Adelaide Park Lands are a defining and iconic feature and landmark of the City of Adelaide. They are nationally and internationally recognised for providing residents and visitors alike connection to the environment and opportunities for sport, exercise, recreation and relaxation.

The Adelaide Park Lands comprise of 29 Parks and 6 City Squares all with a variety of different features and facilities and form the heart of the Metropolitan Open Space System for Greater Metropolitan Adelaide.

The Adelaide Park Lands offer outstanding social value to South Australians who see them as fundamental to the character and ambience of the City.

The Adelaide Park Lands hold immense social value for the people of South Australia, who consider them fundamental to the character and ambience of Adelaide. The City of Adelaide manages approximately 80 percent of the Park Lands, while the remaining 20 percent, including the Adelaide Botanic Gardens and Botanic Park, managed by the South Australian Government.

As the population of Greater Adelaide grows and the demand for open spaces increases, it becomes even more crucial to enhance and protect the Adelaide Park Lands as a publicly accessible natural landscape.

The City of Adelaide recognises the Adelaide Park Lands as a highly significant place valued for its natural and cultural landscape with significant Aboriginal, European and multicultural heritage.

It is also recognised that there is need for the Adelaide Park Lands to prioritise equitable access to diverse and quality places with a strong focus on publicly accessible natural spaces and outdoor recreation.

Preserving the integrity of the Adelaide Park Lands against the pressures of major buildings and development is a key focus for the City of Adelaide. It will continue to advocate for the Park Lands to be managed and maintained as a natural landscape system. This includes managing the National Heritage Listing of the Park Lands and City Layout.

To ensure the protection, nurturing, and appreciation of the Adelaide Park Lands for future generations, the City of Adelaide is committed to implementing the Community Land Management Plan, the Adelaide Park Lands Management Strategy, and the National Heritage Management Plan. This includes responding to heritage requirements and opportunities that arise from managing the National Heritage Listing of the parklands and city layout.

This Community Land Management Plan describes how the Adelaide Park Lands will continue to be cared for and managed as an invaluable asset for the public benefit of the people of South Australia.

SECTION 1: WHAT IS A COMMUNITY LAND MANAGEMENT PLAN?

A Community Land Management Plan sets out Council's approach to using and managing community land on behalf of the community.

Under the [Local Government Act 1999 \(LG Act\)](#), in the City of Adelaide (CoA), "community land" is all local government land (except roads) that is under the care, control and management of the CoA, including the Adelaide Park Lands.

The CoA is required under [section 196 of the LG Act](#) and [section 19 of the Adelaide Park Lands Act 2005 \(APL Act\)](#) to prepare and adopt a management plan for community land.

SECTION 2: ABOUT THIS COMMUNITY LAND MANAGEMENT PLAN

This document is the Community Land Management Plan (CLMP) for the Adelaide Park Lands, prepared in accordance with the LG Act and APL Act.

This CLMP is comprised of two main parts. The first (comprised of sections 1-10) provides information that applies to the Adelaide Park Lands system as a whole, while the second (section 11) provides park specific information about the management of individual parks.

This CLMP:

- Identifies the land to which it applies (see Section 3 and Section 11 of this CLMP)
- Sets out the purpose for which the land is held (see Section 5 and Section 11 of this CLMP)
- Sets out the objectives, policies and proposals for management of the Adelaide Park Lands (see Section 6, Section 9 and Section 11 of this CLMP)
- States performance targets and measures (see Section 6 and Section 11 of this CLMP)
- Provides the management and policy context (see Section 7, Section 8, Section 9 and Section 10 of this CLMP)
- Provides information on any restrictions to public use or movement through the Park Lands (see Section 11 of this CLMP), and
- Includes specific information on relevant policies for the granting of leases and licences (see Section 8.3 of this CLMP).

If there are inconsistencies between the park specific management statements (including purposes, objectives, targets and measures) and the overarching management statements, the park specific management statements take precedence.

The CLMP for the Adelaide Oval Precinct remains a standalone document due to the inherent complexities introduced into the management of that Precinct by the [Adelaide Oval Redevelopment and Management Act 2011](#) (SA) and the resulting Licence Area. A link to this document is provided [here](#).

This CLMP has been drafted to be consistent with the [Adelaide Park Lands Management Strategy 2015–2025 \(APLMS\)](#).

The APLMS is a strategic document that is required under the APL Act. **It establishes the high-level vision, objectives and strategic directions for the Park Lands.**

The APLMS is developed and maintained by Kadaltilla / Park Lands Authority and adopted by the CoA and the State Government.

Under [section 19\(1\) of the APL Act](#), this CLMP must be consistent with the APLMS. Accordingly, this CLMP responds to the vision, objectives and outcomes of the APLMS.

SECTION 3: IDENTIFICATION DETAILS

The land to which this CLMP applies is the 'Adelaide Park Lands' as defined by the APL Act, through the [Park Lands Plan](#), and as outlined in Figure 1 and in the [Community Land Register](#). Individual parks in Section 11 are also identified by their Certificates of Title.

State-managed areas are excluded from this CLMP, equivalent requirements for State Authorities to develop management plans apply under [section 20 of the APL Act](#).

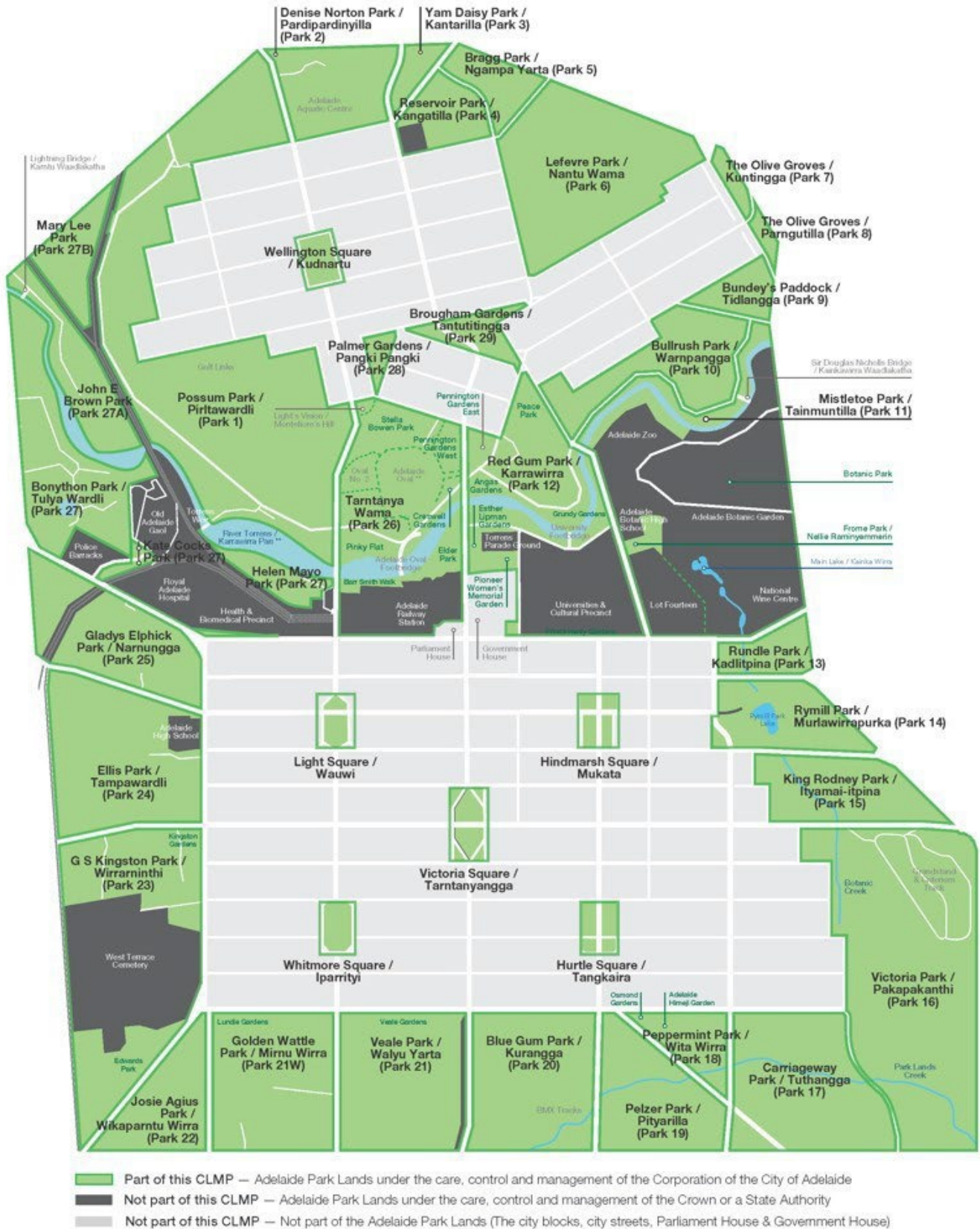


Figure 1. Map of the Adelaide Park Lands to which this CLMP applies

SECTION 4: SETTING THE CONTEXT

The Adelaide Park Lands are a much loved and nationally recognised park system which surround and permeate our city and are central to our identity.

4.1 Description of the Adelaide Park Lands

Today's Park Lands are based on those laid out in Colonel William Light's Adelaide Plan in 1837 and are very important to the identity of Adelaide and South Australia. Light laid out 930 hectares of Park Lands surrounding the city and North Adelaide.

Of this figure, today approximately:

- 723 hectares are dedicated open parks and squares with diverse cultural, recreational and natural values
- 116 hectares are occupied by institutions such as universities, hospitals and cemeteries
- 22 hectares are occupied by rail infrastructure
- 69 hectares from the roads through the Park Lands and car parks

Approximately 675 hectares of the 723 hectares are managed by the CoA (including the River Torrens / Karrawirra Pari and six Squares), with the South Australian Government responsible for the remainder. **This CLMP covers those areas managed by the CoA.**

4.2 Kurna Cultural Significance

The City of Adelaide acknowledges the Adelaide Park Lands contain sites of cultural significance to Kurna miyurna (the Kurna people) and support protection of their cultural heritage, and engagement with practices and activities of living culture.

The Adelaide Park Lands are Kurna yerta the traditional Country of the Kurna people within the greater determination area from Lower Light to Myponga and between Nganu (Mount Lofty Ranges) and Yarla (Spencer Gulf).

The Adelaide Park Lands landscape is Tarntanyangga (Red Kangaroo plains) adjacent the Karrawirra pari (Red Gum Forest River).

Kurna miyurna managed the land for thousands of years before colonisation and continue to possess strong cultural links and maintain cultural practices with the land.

4.3 Cultural Heritage Significance

The Park Lands have undergone continuous change since colonisation and contain many areas and landmarks of cultural heritage significance.

The City of Adelaide commissioned a [Cultural Landscape Assessment](#) (David Jones, 2007) to document how the landscape has been altered and influenced since European settlement.

The assessment assisted in identifying important areas and landmarks and is an important collation of knowledge that continues to influence management of the Adelaide Park Lands.

SECTION 5: OVERALL PURPOSE FOR WHICH THE ADELAIDE PARK LANDS ARE HELD

The Adelaide Park Lands are a defining feature for the City of Adelaide. This section outlines the statutory principles which guide the purpose for which the Adelaide Park Lands are held as community land.

All Parks and Squares covered in this CLMP are contributory elements of the Adelaide Park Lands and City Layout which were set aside as part of Colonel Light's vision to design a city encircled by public parklands for the health and recreation of the community.

The Kurna people managed the Adelaide Park Lands for thousands of years understanding that open spaces are very important for living on the Adelaide Plains. Many Kurna people believe that Light's vision and designs were based on these understandings of the Kurna people and the way they managed the Adelaide Park Lands and more broadly the Adelaide Plains.

PLEASE NOTE:

- **The purpose for which the Adelaide Park Lands are held are not listed in any particular order.**
- **If there are inconsistencies between the purpose for which specific parks are held and the overall purpose, the park specific purpose takes precedence.**

5.1 Overall purpose for which the Adelaide Park Lands are held

Under [section 196\(3\)\(b\) of the LG Act](#), a CLMP must state the purpose for which the land is held.

The purpose for which the Adelaide Park Lands is held is to provide benefit to the people of South Australia by being publicly accessible and supporting a diverse range of environmental, natural heritage, cultural, recreational and social values and activities, providing a defining feature to the City of Adelaide, and contributing to the economic and social well-being of the city.

In addition to the overall purpose for which the Adelaide Park Lands are held, each Park may have a specific purpose for which it is held, outlined in the Park Specific Management section (Section 11).

SECTION 6: MANAGEMENT FRAMEWORK FOR THE ADELAIDE PARK LANDS

The management of the Adelaide Park Lands is governed by the following framework, as shown in Figure 2 and described in Sections 7 and 8.

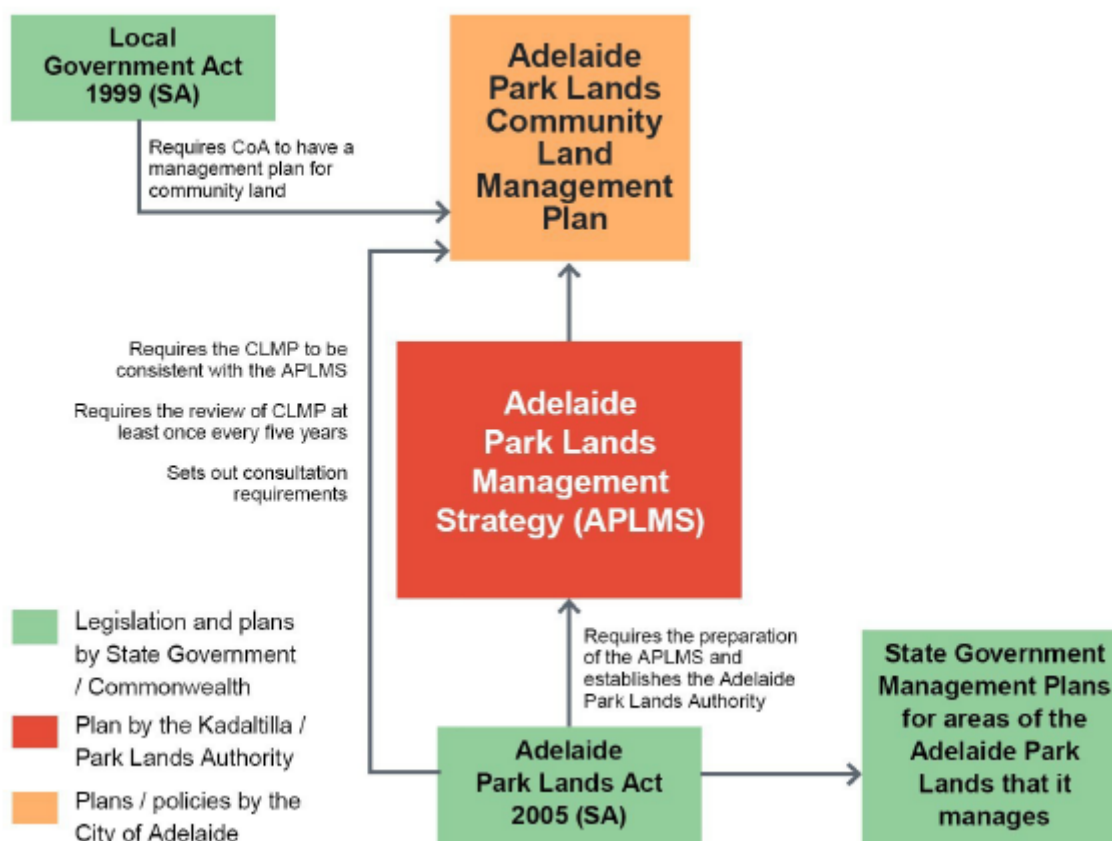


Figure 2. Management framework for the Adelaide Park Lands

6.1 Other contributions to the management of the Adelaide Park Lands

The management of the Adelaide Park Lands involves participation by Kaurna people through the following means:

- [Kadaltilla / Park Lands Authority](#)
- CoA's [Reconciliation Committee](#)
- Specific projects, developments and policies that impact the Adelaide Park Lands

Volunteer groups assist in the management of the Adelaide Park Lands, particularly in relation to the management of biodiversity areas and remnant vegetation.

Lease and licence holders also contribute to the upkeep, maintenance and provision of services in the Adelaide Park Lands.

SECTION 7: KEY LEGISLATION

7.1 *Local Government Act 1999 (SA)*

[The LG Act](#) requires Council to have a management plan for community land. **It provides for local government in South Australia and includes provisions relating to managing community land and the Adelaide Park Lands.**

7.2 *Adelaide Park Lands Act 2005 (SA)*

[The APL Act](#) requires the preparation of a management strategy (the APLMS) and establishes the Adelaide Park Lands Authority / Kadaltilla Park Lands Authority. **It establishes a legislative framework that promotes the special status, attributes and character of the Adelaide Park Lands and management.** It also sets out requirements for the CLMP including consultation and review requirements, to be consistent with the APLMS.

The following principles for management of the areas of the Adelaide Park Lands managed by the City of Adelaide are derived from statutory principles of the [Adelaide Park Lands Act 2005](#) (see Appendix A for the full list of these principles) and include;

- To protect the National Heritage values of the Adelaide Park Lands and City Layout.
- To hold the Adelaide Park Lands for public benefit, freely available to the people of South Australia for their use and enjoyment.
- To ensure a balance of environmental, cultural, recreational and social uses of the Adelaide Park Lands.
- To recognise, protect, enhance and interpret cultural heritage sites of Kaurna, European and multicultural significance.
- To enhance and showcase the biodiversity of the Adelaide Park Lands, including areas of remnant vegetation and biodiversity significance.
- To enhance the ecological health of the Adelaide Park Land watercourses.
- To manage landscapes and buildings sustainably.

7.3 *National Heritage Listing under the Environment Protection and Biodiversity Conservation Act 1999 (Commonwealth)*

The Adelaide Park Lands and City Layout was included in the National Heritage List by the Minister for Environment, Heritage and the Arts on 7 November 2008. This is the highest national recognition that a heritage place can receive.

The Adelaide Park Lands and City Layout have been determined by the Australian Heritage Council as having outstanding value to the nation and are protected by the *Environment Protection and Biodiversity Conservation Act 1999* ([the EPBC Act](#)) which is the Australian Government's key environmental and heritage protection legislation and establishes the National Heritage List. This means that approval must be obtained before taking any action that may have a significant impact on the National Heritage Values.

The management of these National Heritage Values are outlined in the Council's National Management Heritage Plan and are not replicated for each annexure of this CLMP.

The National Heritage Values are summarised below with the values outlined in full in Appendix B.

It should be noted that two of the National Heritage Listing Criteria (C and E) are not relevant to the Adelaide Park Lands and City Layout.

Community Land Management Plan

Table 1. Summary of National Heritage Values – Adelaide Park Lands and City Layout

Criteria	Value
A – Event, Process	<p>Physical expression of the 1837 Adelaide Plan (Map 1) designed and laid out by Colonel William Light with a recognisable historical layout: two major city areas separated by the Torrens River, the encircling Park Lands and six squares, a grid of major and minor roads</p> <p>A turning point in the settlement of Australia as the first place in Australia to be planned and development by free settlers</p> <p>Received a continuing pattern of community support</p> <p>Are a model for planning in other towns in Australia and overseas</p>
B – Rarity	<ol style="list-style-type: none"> 1. Rare as the most complete example of 19th century colonial planning where planning and surveying were undertaken before settlement
D – Principal characteristics of a class of places	<ol style="list-style-type: none"> 1. Exemplar of a 19th century planned urban centre demonstrating the principal characteristics of a nineteenth century city, including a defined boundary, streets in a grid pattern, public squares, expansive public open space for commons, and public domains reflecting the Garden City movement.
F – Creative or technical achievement	<ol style="list-style-type: none"> 1. Regarded throughout Australia and the world as a masterwork of urban design with the use of encircling Park Lands to define the boundary of the development of the City and to provide for health, public access, sport, recreation and public institutional domains, while responding to topography 2. Formal organization, delineation and dedication of Park Lands was a pioneering technical achievement of Colonel William Light 3. Overall landscape planting design incorporating design vistas, formal avenues, plantations, use of specimen trees, botanically important living plant collection and the strategic placement of buildings and statues
G – Social Values	<ol style="list-style-type: none"> 1. Outstanding social value of the Park Lands to South Australians who see them as fundamental to the character and ambience of the City. 2. Longevity of community groups dedicated to protecting the Park Lands.
H – Significant People	<ol style="list-style-type: none"> 1. Famous association with Colonel William Light in planning Adelaide.

The EPBC Act obliges proponents of works to self-assess those works for potential impact on the national heritage values. If it is considered that the works could have a significant impact on the national heritage values, proponents are required to seek approval from the Minister for the Environment and Water.

A guide has been prepared regarding whether works are likely to have a significant impact on the national heritage values of the Adelaide Park Lands and City Layout (Appendix C).

7.4 *Planning, Development and Infrastructure Act 2016 (SA) and Planning and Design Code (SA)*

The *Planning, Development and Infrastructure Act 2016 (SA)* ([the PDI Act](#)) provides the legislative framework for the development system in South Australia. **Works on the Park Lands that are defined as ‘development’, as per the PDI Act, require approval irrespective of the contents of this CLMP.**

The [Planning and Design Code](#) is a state-wide planning rulebook which contains Overlays, Zones, Sub-zones and General Development Policies. Together, these provide the rules that apply to a particular parcel of land against which an application for development will be assessed.

The Park Lands are located within the Adelaide Park Lands Zone and provides specific policies for development in this location. The Adelaide Park Lands Zone has two overarching desired outcomes:

DO1: A unique publicly accessible and well connected open space system, including the formal city squares, that creates a distinctive landscaped park setting for the City of Adelaide.

DO2: A range of passive and active recreational activities with a high-level of amenity, including a safe and connected walking and cycling network, natural areas, sporting fields and club facilities, formal cultural gardens, public artwork and passive recreation areas, as well as opportunities to support a variety of temporary events, such as festivals, concerts and sporting events.

[State Planning Policies](#) are the highest order statutory planning instrument in South Australian and provide the state-wide vision for South Australia’s planning and design system.

7.5 *City of Adelaide By-laws*

The [CoA By-laws](#) guide the management of the city’s public realm including the Adelaide Park Lands. Relevant by-laws include the *Dogs By-law 2018* (for dog management), *Local Government Land By-law 2018* (for activities conducted on CoA land) and *Permits and Penalties By-law 2018* (for events and other activities).

7.6 *Other relevant legislation*

The Adelaide Park Lands may be subject to other legislation, including but not limited to:

- *Adelaide Oval Redevelopment and Management Act 2011*
- *New Women’s and Children’s Hospital Act 2022*
- *Aboriginal Heritage Act 1988*
- *City of Adelaide Act 1998*
- *Dog and Cat Management Act 1995*
- *Emergency Management Act 2004*
- *Environment Protection Act 1993*
- *Heritage Act 1993*

Community Land Management Plan

- *Heritage Places Act 1993*
- *Landscape South Australian Act 2019*
- *Major Events Act 2013*
- *Native Title (South Australia) Act 1994*
- *Native Vegetation Act 1991*
- *South Australian Motor Sport Act 1984*
- *South Australian Public Health Act 2011*
- *Victoria Square Act 2005.*

SECTION 8: KEY CITY OF ADELAIDE STRATEGIES, POLICIES AND PLANS

PLEASE NOTE:

- The City of Adelaide also prepares (and amends from time to time) a number of other, more detailed, policies designed to put into effect the APLMS and CLMP.
- The following list of these strategies, policies and plans is not in any particular order.

8.1 City of Adelaide Strategic Management Plans

Under the LG Act there are three types of plans which together are the strategic management plans of the Council. This includes:

- [The Strategic Plan](#)
- Asset Management Plans
- Long Term Financial Plan

Together they meet the requirements of the LG Act including levels of service and infrastructure requirements.

8.2 Integrated Biodiversity Management Plan

[The Integrated Biodiversity Management Plan](#) (IBMP) outlines, in part, **the CoA's aims and approaches to conserve and improve the native biodiversity in the city**. Integration of biodiversity values with other planning and management in the Park Lands is a key theme of the plan, which has three objectives: to enhance biodiversity, connect people with nature and incorporate Kurna knowledge into the management of the city's biodiversity. The IBMP sets out Key Biodiversity Areas to be protected.

8.3 Adelaide Park Lands Leasing and Licensing Policy

Areas of the Adelaide Park Lands currently subject to leases and licences are shown on the Lease and Licence Map in the [Community Land Register](#) and in Section 11.

Provisions under which the CoA may grant a lease or licence over land in the Park Lands are established under:

- [Sections 200 and 202 of the LG Act](#)
- [Section 21 of the APL Act](#)
- [Section 22 of the *Local Government \(General Regulations\) 2013*](#).

[The Adelaide Park Lands Leasing and Licensing Policy](#) provides CoA's framework for establishment and management of leases and licences for commercial and sporting activities in the Adelaide Park Lands.

8.3.1 Business purposes

Consistent with section 200 of the LG Act, the Adelaide Park Lands (community land) must not be used for business purposes unless the use is approved by Council. Small scale commercial activities are envisaged for areas of the Adelaide Park Lands where the activity provides community benefit and supports outdoor recreational use of the Park Lands.

The Park Lands are exempt from the application of the *Retail and Commercial Lease Act 1995*.

8.3.2 Recreation and sport

The Adelaide Park Lands may be subject to leases and licenses for recreation, sporting or commercial activities where the use:

Community Land Management Plan

- Is consistent with the objectives of management of the Adelaide Park Lands
- Provides community benefit
- Supports the outdoor recreational use of the Adelaide Park Lands.

8.3.3 Cultural uses

The CoA supports the use of the Adelaide Park Lands for cultural practices and activities subject to the approval of Council.

The Adelaide Park Lands may be subject to licences/permits for such activities where the use is temporary and:

- Vehicle access and parking is limited to that required to undertake the activity
- The activity does not require permanent structures or infrastructure.

Any temporary structures must be removed from the site and the park restored to the satisfaction of CoA staff at completion of the activity.

8.3.4 Public health and emergency measures

The Adelaide Park Lands may be subject to licences/permits for activities that implement public health and emergency measures where the use is temporary and it:

- Provides an essential or urgent health, social or community service
- Is undertaken by a State or Federal Government instrumentally or an organisation acting on their behalf
- Limits vehicle access and parking to that required to undertake the activity
- Is limited to the duration of the activity
- Does not require permanent structures or infrastructure
- Or as otherwise approved by Council.

All temporary structures must be removed from the site and the Park restored to the satisfaction of CoA staff at completion of the activity.

8.3.5 Temporary works and compounds

Under [section 202 of the LG Act](#), temporary works and compounds on the Adelaide Park Lands are permitted only where the use is for the purpose of constructing, improving or maintaining infrastructure on the Adelaide Park Lands. These must:

- Adhere to the requirements of City of Adelaide lease and permit conditions
- Be limited to the duration of the project
- Be restricted to one hectare or less to minimise public exclusion
- Provide safe and convenient alternatives to any disrupted public movement patterns
- Minimise impacts from any use or associated use and rehabilitate the site as required
- Not impact on trees and particularly biodiversity areas
- Restrict vehicle access and parking to those necessary to support construction works
- Receive planning consent if necessary
- Be for the purposes of CoA or State or Federal Government instrumentalities or those acting on their behalf.

8.4 Adelaide Event Guidelines

The [Adelaide Event Guidelines](#) provide CoA's framework for managing events in the Adelaide Park Lands. The Adelaide Park Lands may be subject to licences for events where the use is temporary and:

- Is consistent with the objectives of management of the Adelaide Park Lands
- Provides community benefit
- Supports the outdoor recreational use of the Adelaide Park Lands
- Is consistent with the APLMS

Formal approval is also needed for small scale activities that may not require a license.

8.5 Adelaide Park Lands Building Design Guidelines

The [Adelaide Park Lands Building Design Guidelines](#) are a toolkit for creating high performing buildings that are respectful of their context, while also providing outstanding facilities for greater community participation.

The following six principles form the basis of designing successful buildings within the Adelaide Park Lands:

- Celebrate the quality, identity and cultural heritage of the Adelaide Park Lands
- Apply a “whole of park” approach
- Activate the Park Lands
- Be design exemplars
- Balance the visual impact of built form within the Adelaide Park Lands
- Design with sustainability and longevity in mind.

Additional design resources are available via the [Office for Design and Architecture SA](#) (ODASA).

8.6 Other relevant CoA strategies, policies and plans

Under [section 196\(5\)\(a\) of the LG Act](#), a CLMP should, as far as practicable, be consistent with “other relevant official plans and policies about conservation, development and use of the land”.

The following CoA strategies, policies and plans also apply across the Adelaide Park Lands. This list is current at the date of publication and is subject to review at Council’s discretion. Documents are listed in alphabetical order and no particular order of importance.

- [Active City Strategy](#)
- [Adelaide Event Guidelines](#)
- [Adelaide Park Lands Building Design Guidelines](#)
- [Adelaide Park Lands Leasing & Licencing Policy](#)
- [Asset Management Plan for Buildings](#)
- [Asset Management Plan for Lighting and Electrical](#)
- [Asset Management Plan for Park Lands and Open Space](#)
- [Asset Management Plan for Transportation](#)
- [Asset Management Plan for Urban Elements](#)

Community Land Management Plan

- [Asset Management Plan for Water Infrastructure](#)
- [Cultural Strategy](#)
- [Disability Access and Inclusion Plan](#)
- [Dog and Cat Management Plan](#)
- [Dry Zone Map](#)
- [Public Art Action Plan](#)
- [Stretch Reconciliation Action Plan](#)
- [Temporary Use of Public Space Policy](#)
- [Water Sensitive City Action Plan](#)

Other CoA strategies, policies and plans which may be of relevance include:

- [Asset Management Policy](#)
- [City Safety Enforcement Guidelines](#)
- [City Works Operating Guidelines](#)
- [Heritage Strategy](#)
- [Homelessness, Social Housing and Housing Affordability Policy](#)
- [Lighting Policy](#)
- [Liquor Licensing Policy](#)
- [Memorials Operating Guidelines](#)
- [Public Art Operating Guidelines](#)
- [Public Health and Wellbeing Plan](#)
- [Public Toilets Operating Guidelines](#)
- [Resource Recovery Strategy](#)
- [Safer City Policy](#).

SECTION 9: SPECIAL PROVISIONS UNDER REGULATIONS

Under [section 196\(5\)\(b\) of the LG Act](#), a CLMP must contain any special provisions required under the regulations.

There are no such provisions applying to the land covered by this CLMP.

SECTION 10: OVERARCHING OBJECTIVES, TARGETS AND MEASURES FOR THE ADELAIDE PARK LANDS

This section outlines the overarching objectives, targets and measures that apply to each park (as relevant) within the Adelaide Park Lands under the care, control and management of the CoA, as outlined in Table 1 below.

PLEASE NOTE:

- The overarching objectives, targets and measures are not listed in any particular order.
- If there are inconsistencies between the park specific management statements (including objectives, targets and measures) and the overarching management statements, the park specific management statements take precedence.

Table 2. The overarching objectives, targets and measures

Category	Objectives	Targets	Measures
Cultural activities (Kaurna / non-Kaurna)	O1 To provide a diverse range of cultural activities and uses	T1.1 Park Lands are used for a variety of cultural activities and practices	M1.1 Range and number of requests and enquiries received for cultural activities
Events	O2 To provide a diverse range of events	T2.1 Event spaces, activities and infrastructure are managed with regard to the Adelaide Event Guidelines to provide a diverse range of events	M2.1 Range, number and type of events as reported through Council's annual report
Informal use and general recreation	O3 To provide opportunities for informal use and general recreation	T3.1 Park Lands user needs are met regarding informal use and general recreation opportunities	M3.1 Park Lands user satisfaction levels and use of Adelaide Park Lands as measured through the City User Profile and other surveys
Commercial activities	O4 To support commercial activities where they provide community benefit and support the outdoor recreational use of the Park Lands	T4.1 Park Lands provide for a range of commercial offerings that support and encourage outdoor recreational use of the Park Lands	M4.1 Range and number of commercial activities provided within the Park Lands delivering community benefit and supporting outdoor recreational use of the Park Lands as reported at least every five years

Community Land Management Plan

Category	Objectives	Targets	Measures
Biodiversity	O5 To protect and enhance the biodiversity of the Park Lands	T5.1 Key biodiversity areas and remnant vegetation areas are managed with regard to the Integrated Biodiversity Management Plan to protect and enhance biodiversity in the Park Lands	M5.1 Achievement of the measures of success in the Integrated Biodiversity Management Plan as tracked through quarterly internal reports
Trees	O6 To provide a mix of tree species that are healthy, structurally sound and climate resilient	T6.1 Trees are managed with regard to the Asset Management Plan for Park Lands & Open Space to ensure a mix of tree species that are healthy, structurally sound and climate resilient	M6.1 Meet the required community and technical levels of service in the Asset Management Plan for Park Lands & Open Space , as measured by inspections, condition audits for trees in high use areas, customer satisfaction surveys and customer request data
Gardens and open space	O7 To provide gardens and open space that are fit for purpose safe and climate resilient	T7.1 Gardens and open space are managed with regard to the Asset Management Plan for Park Lands & Open Space to ensure that they are fit for purpose, safe and climate resilient	M7.1 Meet the required community and technical levels of service in the Asset Management Plan for Park Lands & Open Space , as measured by performing inspections and condition audits for trees in high use areas, customer satisfaction surveys and customer request data
Lakes, wetlands, watercourses and stormwater	O8 To provide lakes, wetlands and watercourses that contribute to ecological health of the waterways to protect from flooding	T8.1 Lakes, wetlands, watercourses and stormwater infrastructure are managed with regard to Asset Management Plan for Park Lands & Open Space and the Water Sensitive City Action Plan to contribute to ecological health of the waterways and protect from flooding	M8.1 Meet the required community and technical levels of service in the Asset Management Plan for Park Lands & Open Space , as measured by water quality in the Torrens Lake and other recreational lakes; through customer satisfaction surveys and customer request data; as well as reporting on the implementation on the Water Sensitive City Action Plan

Category	Objectives	Targets	Measures
Heritage landscapes and features	O9 To protect heritage landscapes and features	T9.1 Historic and culturally significant landscapes, character, structures, features and spatial layout are managed with regard to the State/Local Heritage Listings and Cultural Landscape Assessments to ensure that they are protected	M9.1 Changes that impact on heritage values are assessed and negative impacts are reported to Council as required
Public art, memorials and interpretation	O10 To provide, maintain and interpret public art and memorials	T10.1 Permanent and temporary public artworks and memorials are managed and interpreted with regard to the Public Art Action Plan , Public Art Operating Guidelines and Memorials Operating Guidelines	M10.1 Meet the required levels of service in the Asset Management Plan for Urban Elements , as measured by customer satisfaction surveys and customer request data M10.2 Achievement of the Public Art Action Plan reported annually
National Heritage Listing	O11 To preserve the National Heritage Listing	T11.1 A National Heritage Management Plan for the City and Adelaide Park Lands is developed by December 2023	M11.1 A National Heritage Management Plan for the city and Adelaide Park Lands is in place by December 2023 and reviewed every five years thereafter

Category	Objectives	Targets	Measures
<p>Public facilities, furniture and amenities <i>Including but not limited to: public toilets, dog parks, playspaces, courts, pitches, pistes, fields, skate park infrastructure, lighting, benches, shelters, bike racks, BBQs, drinking fountains, signage, exercise equipment, fencing, car parking that supports the use of the Adelaide Park Lands</i></p>	<p>O12 To provide public facilities, furniture and amenities that are fit for purpose, safe and maintained</p>	<p>T12.1 Public facilities, furniture and amenities are managed with regard to the</p> <ul style="list-style-type: none"> • AMP for Park Lands & Open Space • AMP for Urban Elements • AMP for Transportation • AMP for Lighting and Electrical • AMP for Buildings • Relevant maintenance operating guidelines; <p>to ensure they are fit for purpose, safe and maintained to meet the needs of Park Lands users</p> <p><i>* AMP = Asset Management Plan</i></p>	<p>M12.1 Meet the required levels of service in the</p> <ul style="list-style-type: none"> • AMP for Park Lands & Open Space • AMP for Urban Elements • AMP for Transportation • AMP for Lighting and Electrical • AMP for Buildings • Relevant maintenance operating guidelines, including those for public toilets, as measured by customer satisfaction surveys and customer request data <p>M12.2 Assess Park Lands users' satisfaction levels and use of Park Lands as measured through the City User Profile and other surveys</p> <p>M12.3 Audit inspections are performed, and monthly internal reports are documented</p> <p><i>* AMP = Asset Management Plan</i></p>

Category	Objectives	Targets	Measures
Foot and cycling paths	O13 To provide a network of foot and cycling paths in the Park Lands (including the Park Lands Trail) that are connected, fit for purpose, safe and maintained	<p>T13.1 Foot and cycling paths (including the Park Lands Trail) are managed with regard to the:</p> <ul style="list-style-type: none"> • AMP for Transportation • Relevant maintenance operating guidelines to ensure they are fit for purpose, safe and maintained to meet the needs of Park Lands users <p>* AMP = Asset Management Plan</p>	<p>M13.1 Meet the required levels of service in the</p> <ul style="list-style-type: none"> • AMP for Transportation • Relevant maintenance operating guidelines, as measured by customer satisfaction surveys and customer request data <p>M13.2 Assess Park Lands users' satisfaction levels and use of Park Lands as measured through the City User Profile and other surveys</p> <p>* AMP = Asset Management Plan</p>
Sporting use (leases and licences)	O14 To support a diverse range of sporting uses	T14.1 Leases and licences are held by a variety of sporting groups that respond to sporting demand	M14.1 Range and type(s) of sporting groups are reported through lessee and licensee annual reports
Sporting buildings and facilities (leases and licences)	<p>O15 To support the provision of community sports buildings and facilities that are fit for purpose and of high-quality so as to complement the Park Lands setting and context when viewed from all perspectives</p> <p>The replacement of an existing building should be considered in the context of the overall building footprint in the Park Lands and not increase total footprint across the Adelaide Park Lands</p>	T15.1 To support upgrades to community sports buildings (where viable) and construction of new community sports buildings that are fit for purpose, and which maximise community participation and diversity of physical activity but to not result in a net increase of built form footprint across the Adelaide Park Lands	M15.1 Audit (at least every five years) of community sports buildings and facilities to provide a strong evidence base for the strategic upgrade of buildings and sporting infrastructure in a prioritised and evidence-based manner and to review and compare built form footprints

Category	Objectives	Targets	Measures
<p>Park Lands maintenance buildings</p>	<p>O16 To provide buildings that support the maintenance of the Park Lands that are fit for purpose and of high-quality so as to complement the Park Lands setting and context when viewed from all perspectives</p> <p>The replacement of an existing building should be considered in the context of the overall building footprint in the Park Lands and not increase total footprint across the Adelaide Park Lands</p>	<p>T16.1 Maintenance buildings are managed with regard to the</p> <ul style="list-style-type: none"> • AMP for Buildings • Relevant maintenance operating guidelines; to ensure they are fit for purpose, safe and maintained but do not result in a net increase of built form footprint across the Adelaide Park Lands 	<p>M16.1 Meet the required levels of service in the</p> <ul style="list-style-type: none"> • AMP for Buildings • Relevant maintenance operating guidelines; as measured by regular condition inspections and audits • Review and compare built form footprints
<p>Small scale business use buildings*</p> <p><i>* Such as kiosks</i></p>	<p>O17 To support the provision of fit for purpose buildings which offer small scale commercial activities that provide community benefit and support the outdoor recreational use of the Park Lands</p>	<p>T17.1 Park Lands provide for a range of buildings which offer small scale commercial activities that support and encourage outdoor recreational use of the Park Lands</p>	<p>M17.1 Range and number of buildings offering small scale commercial activities within the Park Lands delivering community benefit and supporting outdoor recreational use of the Park Lands as reported at least every five years</p>

SECTION 11: PARK SPECIFIC MANAGEMENT

Details of the management of individual parks are outlined in the annexures set out in section 11.

Each annexure:

- Identifies the land
- Outlines the Park context
- Identifies the owner and custodian of the land
- States the purpose for which the land is held
- Lists specific objectives, targets and measures (OTMs) that apply to the park in addition to the over-arching OTMs that apply to all of the Park Lands as outlined in Section 10
- Outlines any future management proposals
- States any restrictions to public use and movement through the park.

PLEASE NOTE:

- **The parks are listed in numerical order (of the park numbers)**
- **The park specific purpose, objectives, targets and measures (where listed) are not listed in any particular order of precedence**
- **If there are inconsistencies between the park specific management (including purposes, objectives, targets and measures) and the overarching management, the park specific management statements take precedence.**

ANNEXURE 1 – POSSUM PARK / PIRLTAWARDLI (PARK 1)

A1.1 Identification of the land

Name of park	Certificate of Title Register Book Volume / Folio Number
Possum Park / Pirltawardli (Park 1)	CR 6102/710, CR 6102/711, CR 6144/507, CR 5373/132, CR 5766/849 (See the Community Land Register)

A1.2 Park Context

Possum Park / Pirltawardli (Park 1) is primarily a golf course but also contains licensed and unlicensed tennis facilities as well as a section of the Park Lands Trail. The park includes a clubhouse, restaurant and a kiosk adjacent the Torrens Weir, and the State Heritage Listed North Adelaide Railway Station.

The Park will continue to meet the golfing and other sporting and recreation needs of the community in attractive, wide open spaces surrounded by large shady trees and dense understorey vegetation within a diverse landscape character.

The site known as ‘Pirltawardli’ was originally known as the ‘Native / ‘Aboriginal Location’ and established to locate Aboriginal people in one place for assimilation purposes. The site known as the Colonial / Iron Store was originally established as a supply centre for the early settlement of Adelaide.



Figure 3. Map of Possum Park / Pirtawardli (Park 1) (source: MetroMap Aerial Imagery 2023)

A1.3 Owner / Custodian

- Owner: The Crown in the right of the State
- Custodian: The Corporation of the City of Adelaide

A1.4 Purpose for which the land is held

In addition to the overall purpose for which the Adelaide Park Lands are held (as outlined in Section 5), the land is held for the purpose of:

Community Land Management Plan

- Providing golf, golfing related activities and ancillary services
- Providing tennis courts
- Providing commercial (hospitality) offerings, in the form of a restaurant, golf course kiosk and the North Adelaide Railway Station
- Providing a venue for temporary events
- Providing a section of the Park Lands Trail.
- Providing public facilities, furniture and amenities to support the purpose for which the land is held under A1.4.

A1.5 Objectives, Targets and Measures for managing the land

The following objectives, targets and measures apply to Possum Park / Pirltawardli (Park 1):

Objectives	Targets	Measures
To provide golf, golfing related activities and ancillary services	Provide public golfing facilities and services that meet users' needs	Assess user satisfaction regarding the range of golfing activities, facilities and services provided through annual visitation data and surveys

In addition, the overarching objectives, targets and measures for the Adelaide Park Lands ([Section 10](#)) also apply to Possum Park / Pirltawardli (Park 1).

A1.6 Management proposals

- Support proposals for golf, golf related activities and ancillary services and proposals in this park that are consistent with the purpose for which the land is held.

A1.7 Restrictions on public use and movement

- Public access may be limited at times when golf is being played.
- Admission fees or membership may be required to access the golf course for the purpose of playing golf.
- Restrictions may apply to the hardstand courts during programmed sporting times for the leaseholder in the licenced area.
- Access to the restaurant is restricted to its opening hours.

ANNEXURE 2 – DENISE NORTON PARK / PARDIPARDINYILLA (PARK 2)

A2.1 Identification of the land

Name of park	Certificate of Title Register Book Volume / Folio Number
Denise Norton Park / Pardipardinyilla (Park 2)	CR 6102/710 (See the Community Land Register)

A2.2 Park Context

Denise Norton Park / Pardipardinyilla (Park 2) is predominantly a recreational and sporting landscape with opportunity for informal recreation and play. It provides a range of formal and informal facilities for cricket, swimming, tennis and family picnics and contains the Adelaide Aquatic Centre and Bush Magic Playspace as well as a section of the Park Lands Trail. A changeroom building is located on the northern side of the park to support the various sporting activities.

The Park will meet the sporting, recreation and socialising needs of the community through fit for purpose facilities and wide open spaces.

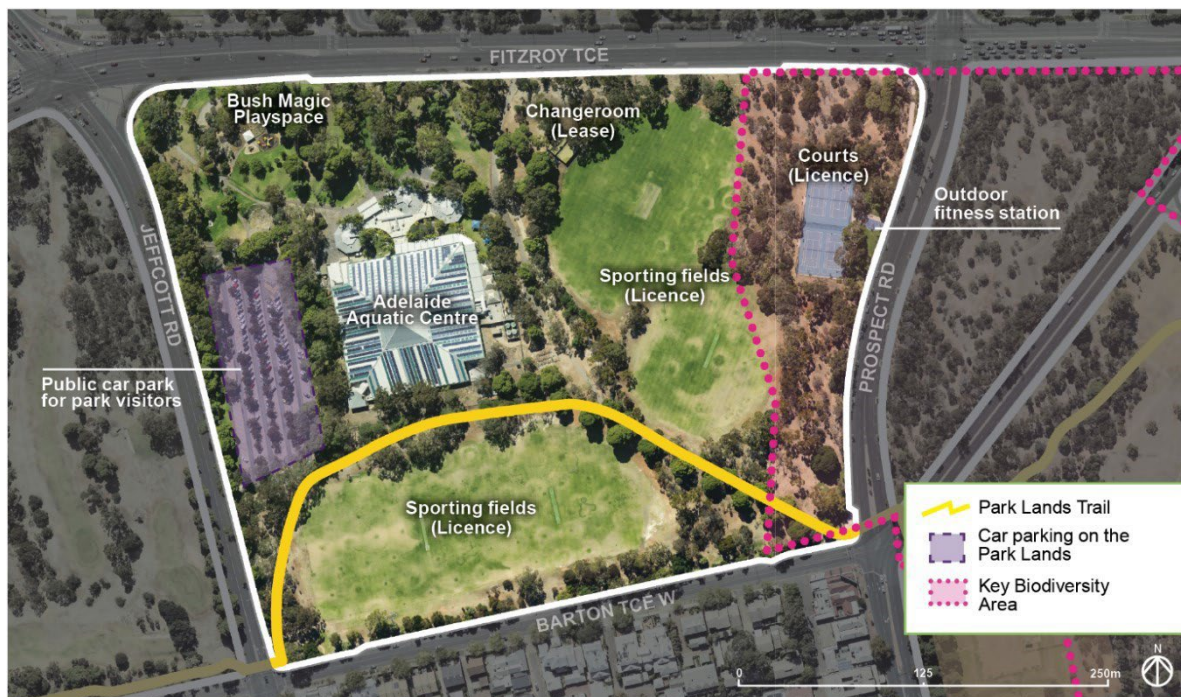


Figure 4. Map of Denise Norton Park / Pardipardinyilla (Park 2)¹ (source: MetroMap Aerial Imagery 2023)

A2.3 Owner / Custodian

- Owner: The Crown in the right of the State
- Custodian: The Corporation of the City of Adelaide

¹ Map is current at the date of publication and layout is anticipated to change under Management Proposal in A2.7

A2.4 Purpose for which the land is held

In addition to the overall purpose for which the Adelaide Park Lands are held (as outlined in Section 5), the land is held for the purpose of:

- Providing for informal recreation, including a playspace and outdoor fitness station
- Providing facilities (indoor and outdoor) for aquatic activities, for fitness and allied health uses and ancillary uses
- Providing sporting fields and tennis courts
- Protecting the Key Biodiversity Area in this park
- Providing a section of the Park Lands Trail.
- Providing public facilities, furniture and amenities to support the purpose for which the land is held under A2.4.

A2.5 Objectives, Targets and Measures for managing the land

The following objectives, targets and measures apply to Denise Norton Park / Pardipardinyilla (Park 2):

Objectives	Targets	Measures
To provide facilities for aquatic activities, fitness and allied health uses and ancillary uses	Provide facilities for aquatic activities, fitness and allied health uses and ancillary uses that meet users' needs	User satisfaction regarding the facilities for aquatic activities, fitness and allied health uses and ancillary uses as reported through annual visitation data and surveys

In addition, to the extent not inconsistent with this Annexure 2, the overarching objectives, targets and measures for the Adelaide Park Lands ([Section 10](#)) also apply to Denise Norton Park / Pardipardinyilla (Park 2).

A2.6 Management proposals

- Support State Government commitment to the relocation and development of a new aquatic facility (incorporating upgraded landscaping and other works to surrounding areas) within the park, including by authorising:
 - the grant of any licence(s) over all areas necessary to facilitate construction activities (including decommissioning of the existing aquatic centre and commissioning of a new facility) and
 - the grant of a form of long term lease to or entry into other form of long term arrangement with the State Government to facilitate the State Government's ownership, management and operation of the new facility.
- Support other facilities and commercial activities complementing the provision of aquatic activities, fitness and allied health uses and ancillary use that are consistent with the purposes for which the land is held;
- Encourage a master plan of the site to promote the integration of uses and spaces.

A2.7 Restrictions on public use and movement

- Admission fees are required to access the Adelaide Aquatic Centre

- There may be restricted access to the sporting fields and courts under licence during programmed sporting times.

ANNEXURE 3 – YAM DAISY PARK / KANTARILLA (PARK 3)

A3.1 Identification of the land

Name of park	Certificate of Title Register Book Volume / Folio Number
Yam Daisy Park / Kantarilla (Park 3)	CR 6102/710 (See the Community Land Register)

A3.2 Park Context

Yam Daisy Park / Kantarilla (Park 3), named after the “kandara” or yam daisy (*Microseris lanceolata*), all of which is a Key Biodiversity Area.

The Park will continue to meet the recreation and socialising needs of the community with wide open spaces surrounded by large shady trees and dense understorey vegetation within an open woodland character.

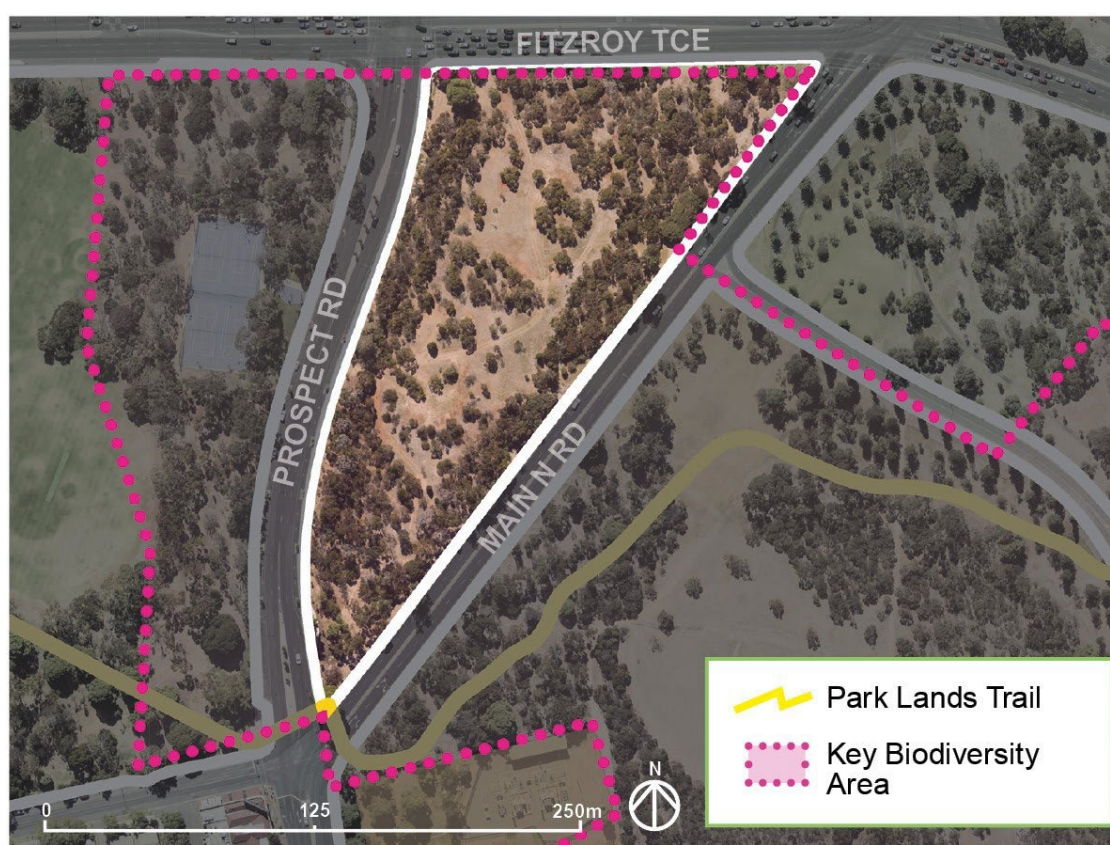


Figure 5. Map of Yam Daisy Park / Kantarilla (Park 3) (source: MetroMap Aerial Imagery 2023)

A3.3 Owner / Custodian

- Owner: The Crown in the right of the State
- Custodian: The Corporation of the City of Adelaide

A3.4 Purpose for which the land is held

In addition to the overall purpose for which the Adelaide Park Lands are held (as outlined in Section 5), the land is held for the purpose of:

- Protecting and enhancing the Key Biodiversity Area in this park

- Providing public facilities, furniture and amenities to support the purpose for which the land is held under A3.4.

A3.5 Objectives, Targets and Measures for managing the land

The overarching objectives, targets and measures for the Adelaide Park Lands ([Section 10](#)) apply to Yam Daisy Park / Kantarilla (Park 3).

There are no park-specific objectives, targets and measures.

A3.6 Management proposals

- Support proposals that are consistent with the purpose for which the land is held.

A3.7 Restrictions on public use and movement

- There are no restrictions to access.

ANNEXURE 4 – RESERVOIR PARK / KANGATILLA (PARK 4)

A4.1 Identification of the land

Name of park	Certificate of Title Register Book Volume / Folio Number
Reservoir Park / Kangatilla (Park 4)	CR 6144/507 (See the Community Land Register)

A4.2 Park Context

Reservoir Park / Kangatilla (Park 4) includes a section of the Park Lands Trail and the State Heritage Listed underground reservoir (State managed) established in the 1870s as a water gravitation point from the Thorndon Park Reservoir. The State managed area is not subject to this CLMP.

The Park will continue to meet the recreation and socialising needs of the community with wide open spaces surrounded by large shady trees and dense understory vegetation within an open woodland character.

A Key Biodiversity Area including a revegetation site is a feature of this park.



Figure 6. Map of Reservoir Park / Kangatilla (Park 4) (source: MetroMap Aerial Imagery 2023)

A4.3 Owner / Custodian

- Owner: The Crown in the right of the State

- Custodian: The Corporation of the City of Adelaide

A4.4 Purpose for which the land is held

In addition to the overall purpose for which the Adelaide Park Lands are held (as outlined in Section 5), the land is held for the purpose of :

- Protecting and enhancing the Key Biodiversity Area in this park
- Providing a section of the Park Lands Trail.
- Providing public facilities, furniture and amenities to support the purpose for which the land is held under A4.4.

A4.5 Objectives, Targets and Measures for managing the land

The overarching objectives, targets and measures for the Adelaide Park Lands ([Section 10](#)) apply to Reservoir Park / Kangatilla (Park 4).

There are no park-specific objectives, targets and measures.

A4.6 Management proposals

- Support proposals that are consistent with the purpose for which the land is held.

A4.7 Restrictions on public use and movement

- There are no restrictions to access.

ANNEXURE 5 – BRAGG PARK / NGAMPA YARTA (PARK 5)

A5.1 Identification of the land

Name of park	Certificate of Title Register Book Volume / Folio Number
Bragg Park / Ngampa Yarta (Park 5)	CR 6102/713 (See the Community Land Register)

A5.2 Park Context

Bragg Park / Ngampa Yarta (Park 5) is named after former Lefevre Terrace residents, William Henry Bragg and his son William Lawrence Bragg, joint recipients of the 1915 Nobel Prize for physics.

The Park will continue to meet the recreation and socialising needs of the community with wide open spaces surrounded by large shady trees and dense understorey vegetation within an open woodland character.

The Park incorporates a section of the Park Lands Trail and the North Adelaide Dog Park comprised of two sections catering for small and larger dogs.

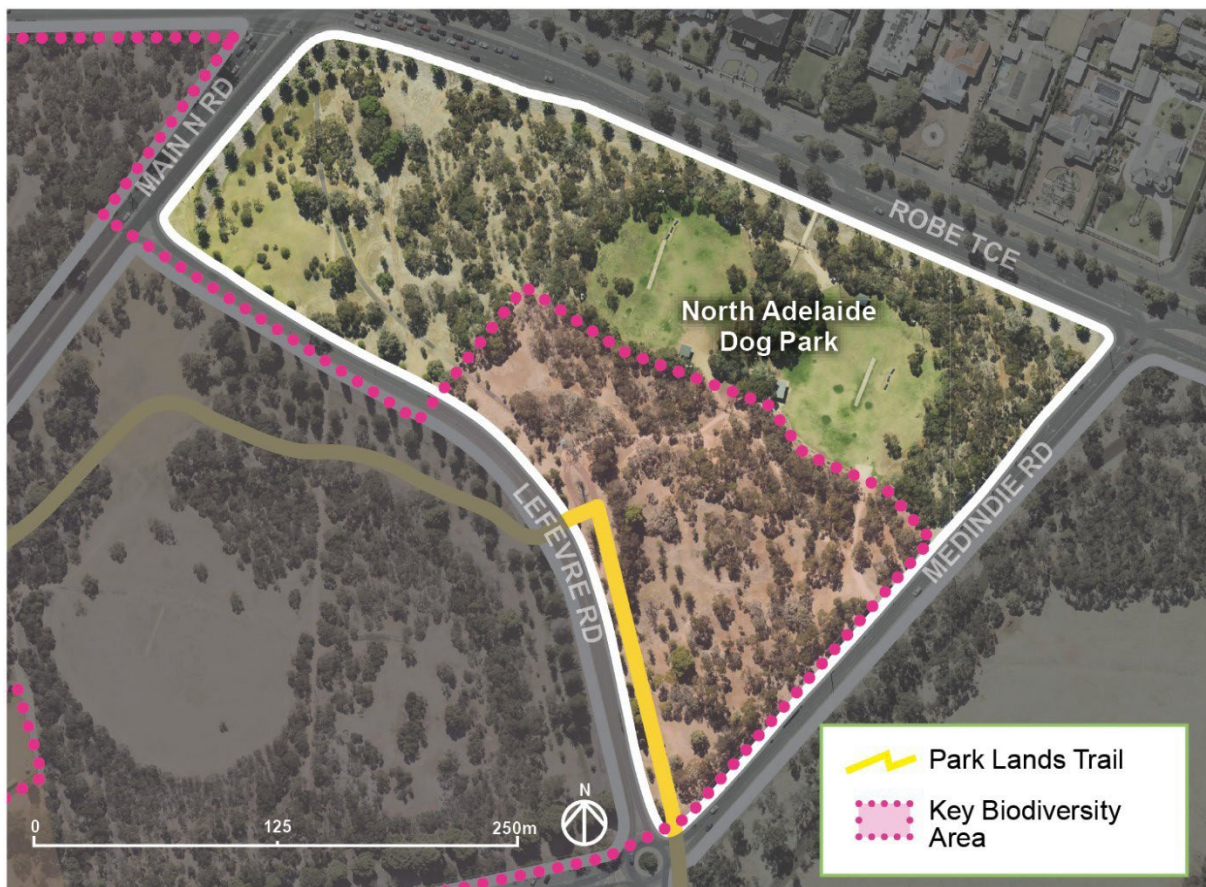


Figure 7. Map of Bragg Park / Ngampa Yarta (Park 5) (source: MetroMap Aerial Imagery 2023)

A5.3 Owner / Custodian

- Owner: The Crown in the right of the State
- Custodian: The Corporation of the City of Adelaide

A5.4 Purpose for which the land is held

In addition to the overall purpose for which the Adelaide Park Lands are held (as outlined in Section 5), the land is held for the purpose of:

- Providing an enclosed dog park
- Protecting and enhancing the Key Biodiversity Area in this park
- Providing a section of the Park Lands Trail.
- Providing public facilities, furniture and amenities to support the purpose for which the land is held under A5.4.

A5.5 Objectives, Targets and Measures for managing the land

The following objectives, targets and measures apply to Bragg Park / Ngampa Yarta (Park 5):

Objectives	Targets	Measures
To provide a fenced area for the exercising of dogs that is safe and secure	The dog park is maintained to a safe and secure standard, with regard to the Asset Management Plan for Park Lands & Open Space and the Asset Management Plan for Urban Elements	Meet the required community and technical levels of service in the Asset Management Plan for Park Lands & Open Space and the Asset Management Plan for Urban Elements as measured by inspections, condition audits of the fencing and associated dog park infrastructure, customer satisfaction surveys and customer request data

In addition, the overarching objectives, targets and measures for the Adelaide Park Lands ([Section 10](#)) also apply to Bragg Park / Ngampa Yarta (Park 5).

A5.6 Management proposals

- Support proposals that are consistent with the purpose for which the land is held.

A5.7 Restrictions on public use and movement

- There are no restrictions to access.

ANNEXURE 6 – LEFEVRE PARK / NANTU WAMA (PARK 6)

A6.1 Identification of the land

Name of park	Certificate of Title Register Book Volume / Folio Number
Lefevre Park / Nantu Wama (Park 6)	CR 6102/713 (See the Community Land Register)

A6.2 Park Context

Lefevre Park / Nantu Wama (Park 6) is the last remaining park to accommodate horse depasturing in the Adelaide Park Lands. Almost all the Adelaide Park Lands has historically been used for the depasturing of livestock.

The Park will continue to embrace the contrast of history, agistment and biodiversity areas while meeting the sporting and recreational needs of the wider community.

The Park incorporates a Key Biodiversity Area and provides a range of formal and informal recreational facilities, including sporting fields, tennis courts, changerooms, storage shed, a community oval and the Glover North Playspace. The park also features a section of the Park Lands Trail.



Figure 8. Map of Lefevre Park / Nantu Wama (Park 6) (source: MetroMap Aerial Imagery 2023)

A6.3 Owner / Custodian

- Owner: The Crown in the right of the State
- Custodian: The Corporation of the City of Adelaide

A6.4 Purpose for which the land is held

In addition to the overall purpose for which the Adelaide Park Lands are held (as outlined in Section 5), the land is held for the purpose of:

- Providing horse depasturing
- Providing for informal recreation, including a playspace
- Providing sporting fields and tennis courts
- Protecting and enhancing the Key Biodiversity Area in this park
- Providing a section of the Park Lands Trail.
- Providing public facilities, furniture and amenities to support the purpose for which the land is held under A6.4.

A6.5 Objectives, Targets and Measures for managing the land

The following objectives, targets and measures apply to Lefevre Park / Nantu Wama (Park 6):

Objectives	Targets	Measures
To provide a fenced area for horse depasturing and related activities that have minimal impact on the land	<p>The depasturing area is fenced to a safe and secure standard</p> <p>The number of depasturing licences issued have minimal impact on the land</p>	<p>Meet the required community and technical levels of service in the Asset Management Plan for Urban Elements as measured by inspections, conditions audits of the fencing, customer satisfaction surveys and customer request data</p> <p>The number of licences issued is reviewed annually and licence conditions imposed to support minimising impact on the land</p>

In addition, the overarching objectives, targets and measures for the Adelaide Park Lands ([Section 10](#)) also apply to Lefevre Park / Nantu Wama (Park 6).

A6.6 Management proposals

- Improve community access through the park.
- Ongoing review of the suitability of horse depasturing over time.
- Support proposals that are consistent with the purpose for which the land is held.

A6.7 Restrictions on public use and movement

- The presence of horses does not limit public access, which is permitted to all areas of the paddocks.
- Restrictions apply during programmed sporting times for the clubroom leaseholder in the sporting fields/courts/licence areas.

ANNEXURE 7 – THE OLIVE GROVES / KUNTINGGA (PARK 7) & THE OLIVE GROVES / PARNGUTILLA (PARK 8)

A7.1 Identification of the land

Name of park	Certificate of Title Register Book Volume / Folio Number
The Olive Groves / Kuntingga (Park 7)	CR 6102/713 (See the Community Land Register)
The Olive Groves / Parngutilla (Park 8)	CR 6102/713 (See the Community Land Register)

A7.2 Park Context

The Olive Groves / Kuntingga (Park 7) and The Olive Groves / Parngutilla (Park 8) are similar in that both parks are surrounded by major roads and house groves of State Heritage Listed olive trees. These two parks have been used continuously for the cultivation of olives since the 1860s and are the oldest olive plantations in the Adelaide Park Lands

There will be continued management of the State Heritage Listed olive trees for the appreciation of the wider community.

[Requests for olive harvesting](#) are considered by Council and permits issued on a case-by- case basis.



Figure 9. Map of The Olive Groves / Kuntingga (Park 7) and The Olive Groves / Parngutilla (Park 8) (source: MetroMap Aerial Imagery 2023)

A7.3 Owner / Custodian

- Owner: The Crown in the right of the State
- Custodian: The Corporation of the City of Adelaide

A7.4 Purpose for which the land is held

In addition to the overall purpose for which the Adelaide Park Lands are held (as outlined in Section 5), the land is held for the purpose of:

- Protecting and managing the State Heritage Listed olive groves.
- Providing public facilities, furniture and amenities to support the purpose for which the land is held under A7.4.

A7.5 Objectives, Targets and Measures for managing the land

The following objectives, targets and measures apply to The Olive Groves / Kuntingga (Park 7) and The Olive Groves / Parngutilla (Park 8):

Community Land Management Plan

Objectives	Targets	Measures
To protect and conserve the State Heritage Listed olive groves	The olive groves in both parks are managed with regard to the State Heritage Listing , Cultural Landscape Assessment and Asset Management Plan for Park Lands & Open Space	Meet the required community and technical levels of service in the Asset Management Plan for Park Lands & Open Space , as measured by inspections, condition audits for trees, customer satisfaction surveys and customer request data; and having regard to the State Heritage Listing and Cultural Landscape Assessment

In addition, the overarching objectives, targets and measures for the Adelaide Park Lands ([Section 10](#)) also apply to The Olive Groves / Kuntingga (Park 7) and The Olive Groves / Parngutilla (Park 8).

A7.6 Management proposals

- Support proposals that are consistent with the purpose for which the land is held.

A7.7 Restrictions on public use and movement

- There are no restrictions to access.

ANNEXURE 8 – BUNDEY’S PADDOCK / TIDLANGGA (PARK 9)

A8.1 Identification of the land

Name of park	Certificate of Title Register Book Volume / Folio Number
Bundey’s Paddock / Tidlangga (Park 9)	CR 6102/712 (See the Community Land Register)

A8.2 Park Context

Bundey’s Paddock / Tidlangga (Park 9) incorporates a sports field, changerooms, storage building, community courts, the Tidlangga Playspace and a pocket orchard. The park also features a section of the Park Lands Trail.

The Park will continue to provide open spaces and fit for purpose facilities for organised recreation and sport, while meeting the wide recreational needs of the community.



Figure 10. Map of Bundey’s Paddock / Tidlangga (Park 9) (source: MetroMap Aerial Imagery 2023)

A8.3 Owner / Custodian

- Owner: The Crown in the right of the State
- Custodian: The Corporation of the City of Adelaide

A8.4 Purpose for which the land is held

In addition to the overall purpose for which the Adelaide Park Lands are held (as outlined in Section 5), the land is held for the purpose of:

- Providing for informal recreation, including a playspace and pocket orchard.
- Providing sporting fields and community courts.
- Providing a section of the Park Lands Trail.

Community Land Management Plan

- Providing public facilities, furniture and amenities to support the purpose for which the land is held under A8.4.

A8.5 Objectives, Targets and Measures for managing the land

The overarching objectives, targets and measures for the Adelaide Park Lands ([Section 10](#)) apply to Bunday's Paddock / Tidlangga (Park 9).

A8.6 Management proposals

- Support the proposals and concept as endorsed by [Council for the community sports building and landscaping](#) (refer page 12 in linked document) for the park, consistent for the purpose for which the land is held.

A8.7 Restrictions on public use and movement

- Restrictions apply during programmed sporting times for the clubroom leaseholder in the sporting fields/licence areas.

ANNEXURE 9 – BULLRUSH PARK / WARNPANGGA (PARK 10)

A9.1 Identification of the land

Name of park	Certificate of Title Register Book Volume / Folio Number
Bullrush Park / Warnpangga (Park 10)	CR 6144/507, CR 6102/712 (See the Community Land Register)

A9.2 Park Context

Bullrush Park / Warnpangga (Park 10) is used predominantly for sports and sporting groups associated with the University of Adelaide. The park features a 2.2 kilometre running track (the 'Uni Loop'), an archery field, clubrooms, storage sheds and two grandstands. The 1930s Grandstand in the eastern end of the park was restored in the early 2000s. The CoA's nursery is situated in the south of the park.

The Park will continue to provide open spaces and fit for purpose facilities for organised recreation and sport, while meeting the wider recreational needs of the community and enhancing the biodiversity within the River Torrens / Karrawirra Pari corridor.



Figure 11. Map of Bullrush Park / Warnpangga (Park 10) (source: MetroMap Aerial Imagery 2023)

A9.3 Owner / Custodian

- Owner: The Crown in the right of the State
- Custodian: The Corporation of the City of Adelaide

A9.4 Purpose for which the land is held

In addition to the overall purpose for which the Adelaide Park Lands are held (as outlined in Section 5), the land is held for the purpose of:

Community Land Management Plan

- Providing for informal recreation, including a fitness loop and outdoor exercise equipment.
- Providing sporting fields and an archery field and activities in accordance with the relevant lease/license over the land.
- Providing a nursery that facilitates CoA’s horticulture, landscaping and Park Lands maintenance operations.
- Protecting and enhancing the biodiversity within this park.
- Providing public facilities, furniture and amenities to support the purpose for which the land is held under A9.4.

A9.5 Objectives, Targets and Measures for managing the land

The following objectives, targets and measures apply to Bullrush Park / Warnpangga (Park 10):

Objectives	Targets	Measures
To provide a Council Nursery that is safe and well maintained	The Nursery (and associated Greenwaste facility), its buildings and equipment are managed with regard to the Asset Management Plan for Buildings and other relevant operating guidelines to ensure that they are safe and well maintained	Meet the required technical levels of service in the Asset Management Plan for Buildings , as measured by annual condition inspections and planned maintenance programs; and other levels of service as required by the relevant plant and fleet operating guidelines

In addition, the overarching objectives, targets and measures for the Adelaide Park Lands ([Section 10](#)) also apply to Bullrush Park / Warnpangga (Park 10).

A9.6 Management proposals

- Support proposals that are consistent with the purpose for which the land is held.

A9.7 Restrictions on public use and movement

- The nursery is operated by the CoA. Monitored public access is allowed [during operating hours](#).
- Restrictions apply during programmed sporting times for the clubroom leaseholder in the sporting fields/licence areas.

ANNEXURE 10 – MISTLETOE PARK / TAINMUNTILLA (PARK 11)

A10.1 Identification of the land

Name of park	Certificate of Title Register Book Volume / Folio Number
Mistletoe Park / Tainmuntilla (Park 11)	CR 6144/507, CR 6102/712, CR 5754/510 (See the Community Land Register)

A10.2 Park Context

Located behind the Adelaide Zoo and Botanic Park, Mistletoe Park / Tainmuntilla (Park 11) offers linear trails surrounded by remnant vegetation, public art and incorporates a Key Biodiversity Area. A section of the Park Lands Trail runs through the park.

The Park will continue to meet the wider recreational needs of the community and include enhancement of the biodiversity within the River Torrens / Karrawirra Pari corridor.

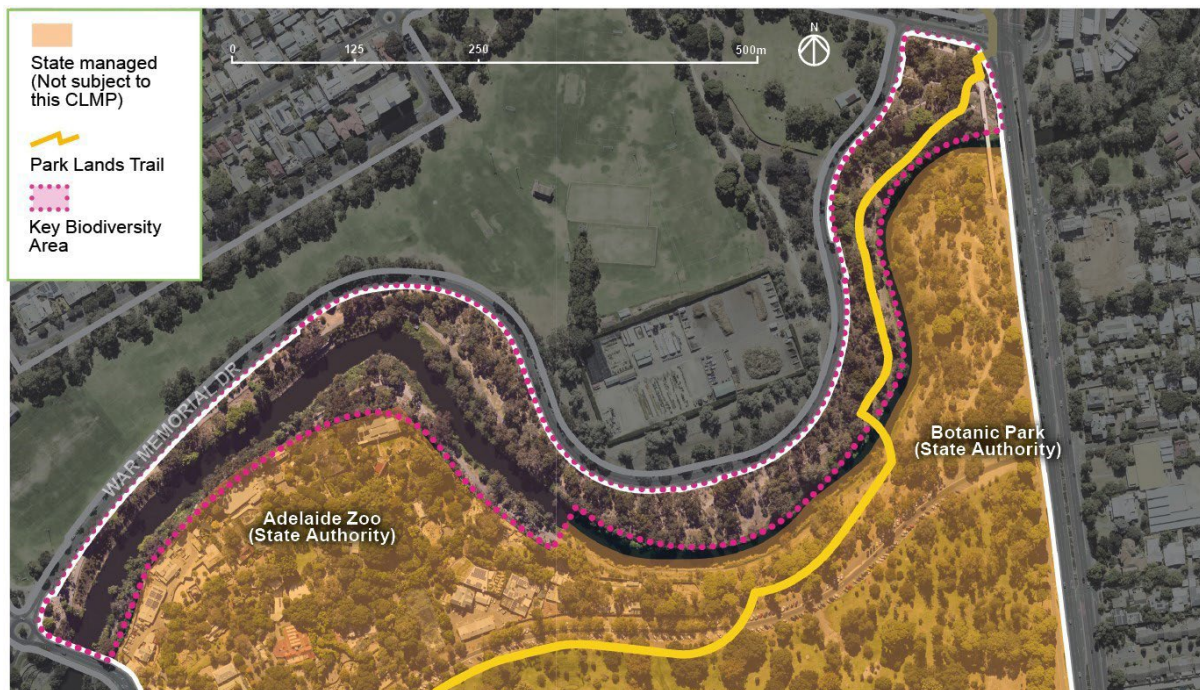


Figure 12. Map of Mistletoe Park / Tainmuntilla (Park 11) (source: MetroMap Aerial Imagery 2023)

A10.3 Owner / Custodian

- Owner: The Crown in the right of the State
- Custodian: The Corporation of the City of Adelaide

A10.4 Purpose for which the land is held

in addition to the overall purpose for which the Adelaide Park Lands are held (as outlined in Section 5), the land is held for the purpose of:

- Providing for informal recreation.
- Protecting and enhancing the Key Biodiversity Area in this park.
- Providing public facilities, furniture and amenities to support the purpose for which the land is held under A10.4.

Community Land Management Plan

- Providing a section of the Park Lands Trail.

A10.5 Objectives, Targets and Measures for managing the land

The overarching objectives, targets and measures for the Adelaide Park Lands ([Section 10](#)) apply to Mistletoe Park / Tainmuntilla (Park 11).

A10.6 Management proposals

- Support proposals that are consistent with the purpose for which the land is held.

A10.7 Restrictions on public use and movement

- There are no restrictions to access.

ANNEXURE 11 – FROME PARK / NELLIE RAMINYEMMERIN

A11.1 Identification of the land

Name of park	Certificate of Title Register Book Volume / Folio Number
Frome Park / Nellie Raminyemmerin	CT 5696/850 (See the Community Land Register)

A11.2 Park Context

Frome Park / Nellie Raminyemmerin is adjoined by the State managed Adelaide Botanic Garden, Lot Fourteen, Botanic Park and Adelaide Botanic High School.

A straight axial view (shown in Figure 13) connects the Barr Smith Library of the University of Adelaide to the Adelaide Botanic Garden, aligning with the original design as intended by South Australian architect Walter Bagot.

There is a known burial site in the park that is significant to the Kaurna people. It is protected under the [Aboriginal Heritage Act 1988](#).

The Park will continue to meet the wider recreational needs of the community and maintain the significant line of sight between Barr Smith Library of the University of Adelaide to the Adelaide Botanic Garden.

The State Government is currently expanding the Adelaide Botanic High School immediately south of the existing as shown in Figure 13.

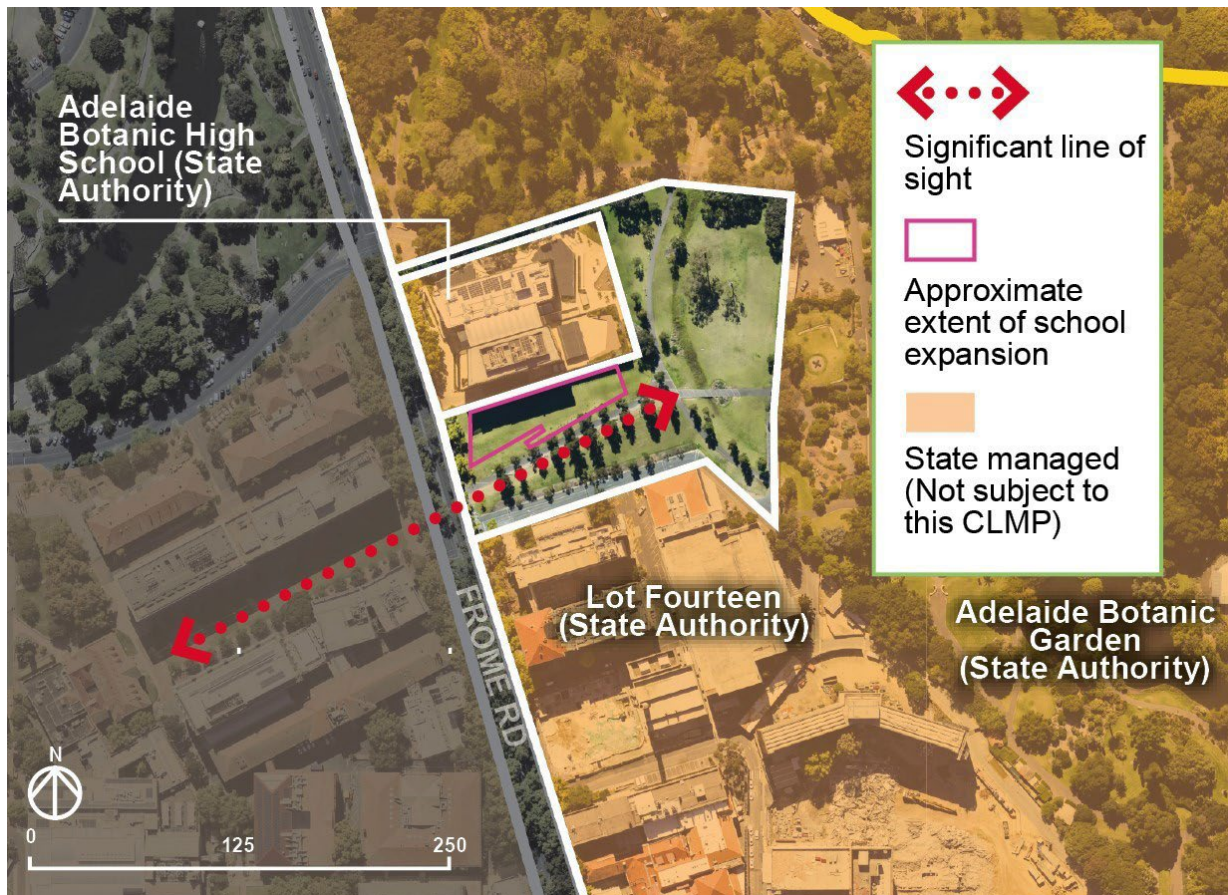


Figure 13. Map of Frome Park / Nellie Raminyemmerin (source: MetroMap Aerial Imagery 2023)

A11.3 Owner / Custodian

- Owner: The Corporation of the City of Adelaide
- Custodian: The Corporation of the City of Adelaide

A11.4 Purpose for which the land is held

In addition to the overall purpose for which the Adelaide Park Lands are held (as outlined in Section 5), the land is held for the purpose of:

- Providing for general and informal recreation for community enjoyment, landscaped in a manner compatible with the adjacent Botanic Gardens and Botanic Park as set out in the Deed of Land Grant when the land was returned to Council by the State Government in 1990.
- Providing a venue for temporary events.
- Providing public facilities, furniture and amenities to support the purpose for which the land is held under A11.4.

A11.5 Objectives, Targets and Measures for managing the land

The overarching objectives, targets and measures for the Adelaide Park Lands ([Section 10](#)) apply to Frome Park / Nellie Raminyemmerin.

A11.6 Management proposals

- Support proposals that are consistent with the purpose for which the land is held including contemplation of:
 - Reducing pedestrian and vehicular conflict
 - Pedestrian and cyclist movement
 - Maintaining the axial central path and avenue of trees
 - Encouraging integration with surrounding uses such as the Botanic High School and Lot Fourteen.

A11.7 Restrictions on public use and movement

- There are no restrictions to access.

ANNEXURE 12 – RED GUM PARK / KARRAWIRRA (PARK 12)

A12.1 Identification of the land

Name of park	Certificate of Title Register Book Volume / Folio Number
Red Gum Park / Karrawirra (Park 12)	CR 6144/507, CR 6142/421, CR 6102/717, CR 5737/419, CR 5754/511 (See the Community Land Register)

A12.2 Park Context

Red Gum Park / Karrawirra (Park 12) offers a diverse mix of uses and landscapes, including manicured memorial gardens, open sporting fields and paths along the river. As one of the most central parks to the city centre, it is picturesque and popular for both formal and casual recreation.

The Park will continue to provide formal gardens through attractive and well-designed oases, with the southern part of Karrawirra (Park 12) transitioning between North Adelaide and the City, with open vistas afforded by the playing fields and structured landscape setting, leading to the urban gardens of the riverside environment.

The park features a restaurant, café, rowing sheds, clubrooms and multiple State Heritage places.

Community Land Management Plan



Figure 14. Map of Red Gum Park / Karrawirra (Park 12) (source: MetroMap Aerial Imagery 2023)

A12.3 Owner / Custodian

- Owner: The Crown in the right of the State
- Custodian: The Corporation of the City of Adelaide

A12.4 Purpose for which the land is held

In addition to the overall purpose for which the Adelaide Park Lands are held (as outlined in Section 5), the land is held for the purpose of:

- Providing for informal recreation, trail, ornamental gardens and memorial gardens.
- Providing sporting fields and rowing sheds and activities in accordance with the relevant lease / license over the land.
- Providing commercial hospitality offering.
- Providing public facilities, furniture and amenities to support the purpose for which the land is held under A12.4.

A12.5 Objectives, Targets and Measures for managing the land

The overarching objectives, targets and measures for the Adelaide Park Lands ([Section 10](#)) apply to Red Gum Park / Karrawirra (Park 12).

A12.6 Management proposals

- Support proposals that are consistent with the purpose for which the land is held.

A12.7 Restrictions on public use and movement

- Restrictions apply during programmed sporting times for the clubrooms' leaseholders in the sporting fields/licence areas.
- Access to the restaurants is restricted to its opening hours.

ANNEXURE 13 – RUNDLE PARK / KADLITPINA (PARK 13)

A13.1 Identification of the land

Name of park	Certificate of Title Register Book Volume / Folio Number
Rundle Park / Kadlitpina (Park 13)	CR 6170/712 (See the Community Land Register)

A13.2 Park Context

Rundle Park / Kadlitpina (Park 13) is a popular venue for festivals and events. The park features tree avenues and several heritage elements including the War Horse Memorial and Light Horse Memorial (recognised as Local Heritage Places) and the Valve House.

The Park will continue to provide picnic and event spaces for the enjoyment of the wider community.

A section of the Park Lands Trail runs through the park.



Figure 15. Map of Rundle Park / Kadlitpina (Park 13)

A13.3 Owner / Custodian

- Owner: The Crown in the right of the State
- Custodian: The Corporation of the City of Adelaide

A13.4 Purpose for which the land is held

In addition to the overall purpose for which the Adelaide Park Lands are held (as outlined in Section 5), the land is held for the purpose of:

- Providing for informal recreation, including a pétanque piste.
- Providing a section of the Park Lands Trail.
- Providing a venue for temporary events.
- Providing public facilities, furniture and amenities to support the purpose for which the land is held under A13.4.

A13.5 Objectives, Targets and Measures for managing the land

The overarching objectives, targets and measures for the Adelaide Park Lands ([Section 10](#)) apply to Rundle Park / Kadlitpina (Park 13).

A13.6 Management proposals

- Support proposals that are consistent with the purpose for which the land is held.
- Support the rehabilitation of the Botanic Creek watercourse.

A13.7 Restrictions on public use and movement

- A portion of the south-eastern corner of the park cannot be used for events or vehicle access due to it being an emergency access area for the O-Bahn busway tunnel (State managed).

ANNEXURE 14 – RYMILL PARK / MURLAWIRRAPURKA (PARK 14)

A14.1 Identification of the land

Name of park	Certificate of Title Register Book Volume / Folio Number
Rymill Park / Murlawirrapurka (Park 14)	CR 6170/713, CR 6170/714, CR6175/947, CR6175/948 (See the Community Land Register)

A14.2 Park Context

Rymill Park / Murlawirrapurka (Park 14) provides a range of facilities for informal recreation and events. The 1960s gardenesque landscape, which is popular for family picnics, also contains a lake, kiosk, a bowling club and Quentin Kenihan Inclusive Playspace. A section of the Park Lands Trail runs through the park.

The Park will continue to provide picnic and event spaces for the enjoyment of the wider community.

The O-Bahn busway tunnel (State managed) is accessed on the western side of the park.



Figure 16. Map of Rymill Park / Murlawirrapurka (Park 14) (source: MetroMap Aerial Imagery 2023)

A14.3 Owner / Custodian

- Owner: The Crown in the right of the State
- Custodian: The Corporation of the City of Adelaide

A14.4 Purpose for which the land is held

In addition to the overall purpose for which the Adelaide Park Lands are held (as outlined in Section 5), the land is held for the purpose of:

- Providing for informal recreation, including a lake feature, island, fountain, ornamental gardens and a playspace.
- Providing a venue for temporary events.

- Providing a kiosk and the Adelaide Bowling Club.
- Providing quiet spaces for contemplation and reflection.
- Providing a section of the Park Lands Trail.
- Providing public facilities, furniture and amenities to support the purpose for which the land is held under A14.4.

A14.5 Objectives, Targets and Measures for managing the land

The overarching objectives, targets and measures for the Adelaide Park Lands ([Section 10](#)) apply to Rymill Park / Murlawirrapurka (Park 14).

A14.6 Management proposals

- Support the upgrade, renewal and maintenance of park features and infrastructure (including kiosk and lake), consistent with the purpose for which the land is held and the [Rymill Park / Murlawirrapurka \(Park 14\) Master Plan](#) as endorsed by Council.

A14.7 Restrictions on public use and movement

- Access to the Adelaide Bowling Club is restricted to its opening hours.

ANNEXURE 15 – KING RODNEY PARK / ITYAMAI-ITPINA (PARK 15)

A15.1 Identification of the land

Name of park	Certificate of Title Register Book Volume / Folio Number
King Rodney Park / Ityamai-itpina (Park 15)	CR 6132/226 (See the Community Land Register)

A15.2 Park Context

King Rodney Park / Ityamai-itpina (Park 15) is predominantly a recreational and sporting landscape. It provides a range of formal and informal facilities, including the Glover East Playspace, disc golf, an activity hub which incorporates community courts and a skate park. A clubroom, changeroom and shed support the various sporting activities. A section of the Park Lands Trail also runs through the park.

The Park will continue to provide space and facilities for organised recreation and sport, while meeting the wider recreational needs of the community.

The park also features a historic olive grove dating from the 1870s. [Requests for olive harvesting](#) are considered by Council and permits issued on a case-by-case basis.

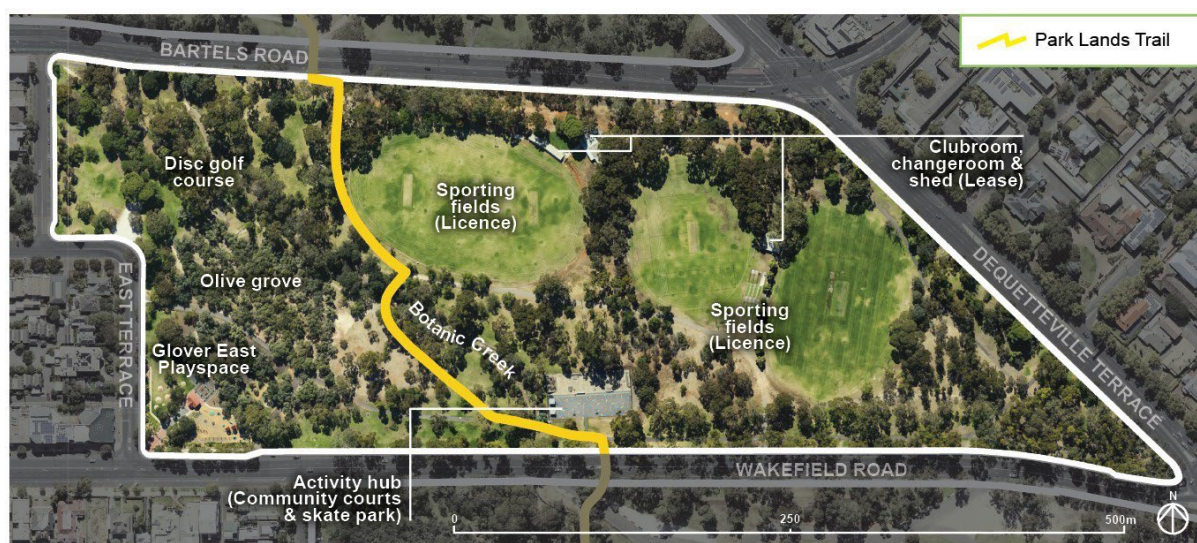


Figure 17. King Rodney Park / Ityamai-itpina (Park 15) (source: MetroMap Aerial Imagery 2023)

A15.3 Owner / Custodian

- Owner: The Crown in the right of the State
- Custodian: The Corporation of the City of Adelaide

A15.4 Purpose for which the land is held

In addition to the overall purpose for which the Adelaide Park Lands are held (as outlined in Section 5), the land is held for the purpose of:

- Providing for informal recreation, including disc golf facilities, a playspace and an activity hub that incorporates community courts and a skate park.
- Providing sporting fields.
- Providing a section of the Park Lands Trail.

- Providing public facilities, furniture and amenities to support the purpose for which the land is held under A15.4.

A15.5 Objectives, Targets and Measures for managing the land

The overarching objectives, targets and measures for the Adelaide Park Lands ([Section 10](#)) apply to King Rodney Park / Ityamai-itpina (Park 15).

A15.6 Management proposals

- Support proposals that are consistent with the purpose for which the land is held.

A15.7 Restrictions on public use and movement

- Restrictions apply during programmed sporting times for the clubroom leaseholder in the sporting fields/licence areas.

ANNEXURE 16 – VICTORIA PARK / PAKAPAKANTHI (PARK 16)

A16.1 Identification of the land

Name of park	Certificate of Title Register Book Volume / Folio Number
Victoria Park / Pakapakanthi (Park 16)	CR 6182/535 (See the Community Land Register)

A16.2 Park Context

Victoria Park / Pakapakanthi (Park 16) provides for a diverse range of formal and informal activities, including the hosting of major events. It is popular for informal recreation such as cycling, jogging, dog walking and [operating model aircraft and drones](#). A section of the Park Lands Trail runs along the western side of the park.

A prominent feature is the restored Grandstand and surrounding buildings of the former racecourse which are listed as State Heritage Places. The park is the site of the first Arbor Day plantings in Australia in 1889. These trees are identified on the National Trust of South Australia’s Register of Significant Trees.

The southern section of the park features significant remnant vegetation protected under a Key Biodiversity Area and joint management agreement between Council and the State Government.

A new wetland in the southern section of the park forms part of the wider Brown Hill Keswick Creek stormwater catchment area and assists in mitigating flooding events in the Park Lands and surrounding suburbs.

The park hosted major motor sport events from 1985 – 2020. The *South Australian Motor Sport Act 1984* (MS Act) provides broad powers to enable the staging of up to two motor sport events per year. Motor sport racing was re-introduced in 2022.

The Park will create a vibrant, flexible and sustainable recreational open space, supporting a variety of community activities whilst preserving the unique landscape and heritage qualities of the Park. The park will also retain the open expansive nature of the park together with the associated vistas across the park to the hills and City and define open spaces with mature tree planting to the edges of the Park.



Figure 18. Map of Victoria Park / Pakapakanthi (Park 16) (source: MetroMap Aerial Imagery 2023)

Community Land Management Plan

A16.3 Owner / Custodian

- Owner: The Crown in the right of the State
- Custodian: The Corporation of the City of Adelaide

A16.4 Purpose for which the land is held

In addition to the overall purpose for which the Adelaide Park Lands are held (as outlined in Section 5), the land is held for the purpose of:

- Providing for informal recreation, including the Criterium Track, Motor Sport Track, fitness trail and [areas for Remotely Piloted Aircrafts](#).
- Providing sporting fields.
- Providing facilities for commercial operations (hospitality), such as the Grandstand, Adelaide Racing Club Office / Bookmakers Building and kiosk.
- Providing a venue for temporary events.
- Providing a wetland and ancillary amenities for the management of stormwater.
- Protecting the Key Biodiversity Area in this park.
- Providing a section of the Park Lands Trail.
- Providing public facilities, furniture and amenities to support the purpose for which the land is held under A16.4.

A16.5 Objectives, Targets and Measures for managing the land

The following objectives, targets and measures apply to Victoria Park / Pakapakanthi (Park 16):

Objectives	Targets	Measures
To provide an area in which Remotely Piloted Aircraft (RPAs) may be flown safely	A safe area for the flying of RPAs is provided, in accord with Civil Aviation Safety Authority (CASA) requirements	Appropriate signage is in place and is maintained to meet the required community and technical levels of service in the Asset Management Plan for Urban Elements as measured by inspections, condition audits of the signs, customer satisfaction surveys and customer request data Groups using the area do so under permit and are registered with CASA to operate RPAs in the areas designated

In addition, the overarching objectives, targets and measures for the Adelaide Park Lands ([Section 10](#)) also apply to Victoria Park / Pakapakanthi (Park 16).

A16.6 Management proposals

- Investigate landscape improvements for the park to create a cooler, more hospitable environment.
- The wetland is managed in accordance with an agreement with the Brown Hill Keswick Creek Stormwater Management Authority.

- The remnant vegetation within the Key Biodiversity Area is cared for under a Management Agreement with the State Government.
- Council is preparing a Master Plan for Victoria Park/ Pakapakanthi (Park 16).

A16.7 Restrictions on public use and movement

- Restrictions on public use and movement may be subject to restrictions imposed by the *South Australian Motor Sport Act 1984* and associated motor sport events as well as other major events.
- Restrictions apply during programmed sporting times for the sporting fields.
- Access to the commercial operation is restricted to their opening hours.
- Operators of remotely piloted aircraft must adhere to [CASA regulations](#).

ANNEXURE 17 – CARRIAGEWAY PARK / TUTHANGGA (PARK 17)

A17.1 Identification of the land

Name of park	Certificate of Title Register Book Volume / Folio Number
Carriageway Park / Tuthangga (Park 17)	CR 6102/717, CR5757/513 (See the Community Land Register)

A17.2 Park Context

Carriageway Park / Tuthangga (Park 17) offers naturalistic landscapes to the north and sporting fields to the south.

The Key Biodiversity Area in the park was the site of the first Kurna Kardla Parranthi – the Kurna Cultural Burn – where traditional fire management practices were reintroduced into the Park Lands as a strong demonstration of Council’s commitment to reconciliation.

A line of English Elms cuts diagonally through the park, forming the Elm Carriageway. This historic avenue of elms, planted in the 1870s, formed a carriageway connecting the city to the south-eastern suburbs.

Also in this park is an earth-covered mound, the former Glenelg Reservoir, which used to supply water to the city and beyond. The reservoir was discontinued in 1982.

The Park will continue to meet the sporting and recreation needs of the community in attractive, wide-open spaces surrounded by large shady trees within an open woodland character.

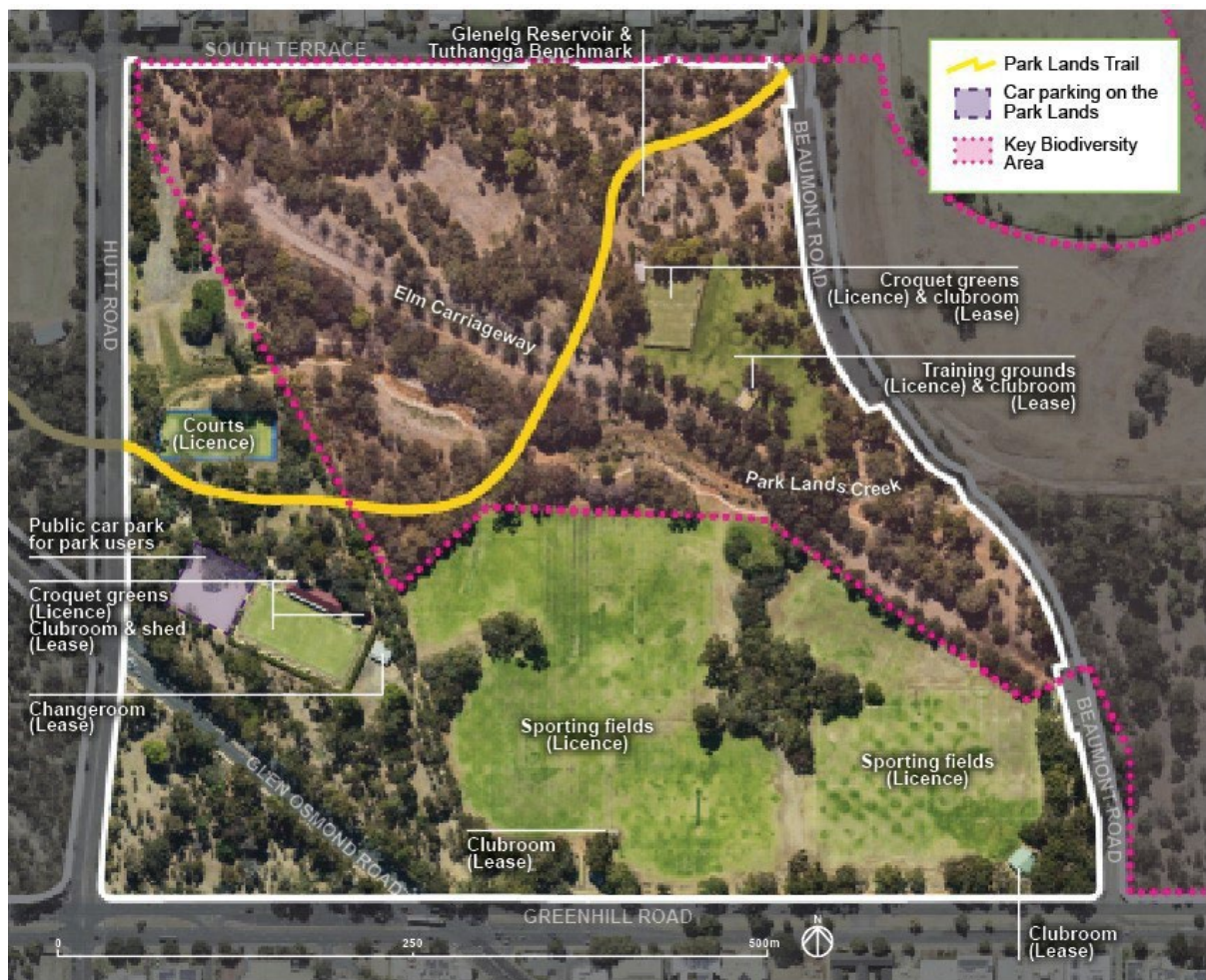


Figure 19. Map of Carriageway Park / Tuthangga (Park 17) (source: MetroMap Aerial Imagery 2023)

A17.3 Owner / Custodian

- Owner: The Crown in the right of the State
- Custodian: The Corporation of the City of Adelaide

A17.4 Purpose for which the land is held

In addition to the overall purpose for which the Adelaide Park Lands are held (as outlined in Section 5), the land is held for the purpose of:

- Providing for informal recreation, including the Elm Carriageway.
- Providing sporting fields, courts, training grounds and croquet greens.
- Protecting the Key Biodiversity Area in this park.
- Providing a section of the Park Lands Trail.
- Providing public facilities, furniture and amenities to support the purpose for which the land is held under A17.4.

A17.5 Objectives, Targets and Measures for managing the land

The overarching objectives, targets and measures for the Adelaide Park Lands ([Section 10](#)) apply to Carriageway Park / Tuthangga (Park 17).

A17.6 Management proposals

- Supports proposals that are consistent with the purpose for which the land is held.
- Support opportunities to consolidate buildings to better support mixed sport participation.

A17.7 Restrictions on public use and movement

- Restrictions apply during programmed sporting times for the clubroom leaseholder in the sporting fields/licence areas.

ANNEXURE 18 – PEPPERMINT PARK / WITA WIRRA (PARK 18)

A18.1 Identification of the land

Name of park	Certificate of Title Register Book Volume / Folio Number
Peppermint Park / Wita Wirra (Park 18)	CR 6102/717 (See the Community Land Register)

A18.2 Park Context

A relatively small park, Peppermint Park / Wita Wirra (Park 18) houses several beautiful ornamental gardens, including the Adelaide Himeji Garden and Osmond Garden. The Adelaide Himeji Garden is designed as a traditional Japanese garden, to commemorate CoA's sister city relationship with the Japanese city of Himeji. The park also features a sporting field and associated clubroom.

The Park will continue to meet the sporting and recreation needs of the community in attractive, wide open spaces surrounded by large shady trees within an open woodland character and maintain the interesting contrasts of Himeji and Osmond Gardens within these parks.

A section of the Park Lands Trail runs through the southern corner of the park.



Figure 20. Map of Peppermint Park / Wita Wirra (Park 18) (source: MetroMap Aerial Imagery 2023)

A18.3 Owner / Custodian

- Owner: The Crown in the right of the State
- Custodian: The Corporation of the City of Adelaide

A18.4 Purpose for which the land is held

In addition to the overall purpose for which the Adelaide Park Lands are held (as outlined in Section 5), the land is held for the purpose of:

- Providing for informal recreation, in the form of the Adelaide Himeji Garden and Osmond Gardens.
- Providing sporting fields.
- Providing a section of the Park Lands Trail.
- Providing public facilities, furniture and amenities to support the purpose for which the land is held under A18.4.

A18.5 Objectives, Targets and Measures for managing the land

The overarching objectives, targets and measures for the Adelaide Park Lands ([Section 10](#)) apply to Peppermint Park / Wita Wirra (Park 18).

A18.6 Management proposals

- Support proposals that are consistent with the purpose for which the land is held.

A18.7 Restrictions on public use and movement

- Access to the Adelaide Himeji Garden is restricted to its [seasonal opening hours](#).
- Restrictions apply during programmed sporting times for the clubroom leaseholder in the sporting fields/licence areas.

ANNEXURE 19 – PELZER PARK / PITYARILLA (PARK 19)

A19.1 Identification of the land

Name of park	Certificate of Title Register Book Volume / Folio Number
Pelzer Park / Pityarilla (Park 19)	CR 6102/717 (See the Community Land Register)

A19.2 Park Context

Pelzer Park / Pityarilla (Park 19) contains one of the most popular activity hubs in the Adelaide Park Lands, including the Kurna Yarning Circle, Marshmallow and Oxbow Playspaces and the Pityarilla Dog Park. It features community courts, sporting fields and associated clubrooms. Ponder Avenue, running along the southern side of Glen Osmond Road, was constructed in 1901 as the first cycling track in the Park Lands.

The Park will continue to meet the sporting and recreation needs of the community in attractive, wide open spaces surrounded by large shady trees within an open woodland character.

A section of the Park Lands Trail runs through the centre of the park.



Figure 21. Map of Pelzer Park / Pityarilla (Park 19) (source: MetroMap Aerial Imagery 2023)

A19.3 Owner / Custodian

- Owner: The Crown in the right of the State
- Custodian: The Corporation of the City of Adelaide

A19.4 Purpose for which the land is held

In addition to the overall purpose for which the Adelaide Park Lands are held (as outlined in Section 5), the land is held for the purpose of:

- Providing for informal recreation, including two playspaces and a fenced dog park.
- Providing sporting fields and community courts.
- Providing a section of the Park Lands Trail.
- Providing public facilities, furniture and amenities to support the purpose for which the land is held under A19.4.

A19.5 Objectives, Targets and Measures for managing the land

The following objectives, targets and measures apply to Pelzer Park / Pityarilla (Park 19):

Objectives	Targets	Measures
To provide a fenced area for the exercising of dogs that is safe and secure	The dog park is maintained to a safe and secure standard, with regard to the Asset Management Plan for Park Lands & Open Space and the Asset Management Plan for Urban Elements	Meet the required community and technical levels of service in the Asset Management Plan for Park Lands & Open Space and the Asset Management Plan for Urban Elements as measured by inspections, condition audits of the fencing and associated dog park infrastructure, customer satisfaction surveys and customer request data

In addition, the overarching objectives, targets and measures for the Adelaide Park Lands ([Section 10](#)) also apply to Pelzer Park / Pityarilla (Park 19).

A19.6 Management proposals

- Support proposals that are consistent with the purpose for which the land is held.

A19.7 Restrictions on public use and movement

- Restrictions apply during programmed sporting times for the clubroom leaseholder in the sporting fields/licence areas.

ANNEXURE 20 – BLUE GUM PARK / KURANGGA (PARK 20)

A20.1 Identification of the land

Name of park	Certificate of Title Register Book Volume / Folio Number
Blue Gum Park / Kurangga (Park 20)	CR 6102/717 (See the Community Land Register)

A20.2 Park Context

Blue Gum Park / Kurangga (Park 20) is predominantly a recreational and sporting landscape, that provides for a range of sporting activities including hockey, athletics, tennis, petanque and bicycle motorcross (BMX). A number of clubrooms and sheds support these various sporting pursuits. A section of the Park Lands Trail also runs through the park.

The Glover South Playspace and TreeClimb, a commercial (recreation and hospitality) facility are further attractors to the park.

The park is the site of the new Brown Hill Keswick Creek realignment for the improvement of drainage and flood mitigation.

The Park will continue to meet the sporting and recreation needs of the community in attractive, wide open spaces surrounded by large shady trees within an open woodland character.



Figure 22. Map of Blue Gum Park / Kurangga (Park 20) (source: MetroMap Aerial Imagery 2023)

A20.3 Owner / Custodian

- Owner: The Crown in the right of the State
- Custodian: The Corporation of the City of Adelaide

A20.4 Purpose for which the land is held

In addition to the overall purpose for which the Adelaide Park Lands are held (as outlined in Section 5), the land is held for the purpose of:

- Providing for informal recreation, including a playspace and a community BMX facility.
- Providing sporting fields, courts, petanque piste and ancillary facilities.
- Providing a TreeClimb facility.
- Providing for creek realignment infrastructure for the management of stormwater.
- Providing a section of the Park Lands Trail.
- Providing public facilities, furniture and amenities to support the purpose for which the land is held under A20.4.

A20.5 Objectives, Targets and Measures for managing the land

The following objectives, targets and measures apply to Blue Gum Park / Kurangga (Park 20):

Objectives	Targets	Measures
To provide a Bicycle Motorcross (BMX) facility that is safe and fit for purpose	The BMX facility is safe and fit for purpose	Meet the required community and technical levels of service in the Asset Management Plan for Urban Elements as measured by inspections, condition audits of the jumps, customer satisfaction surveys and customer request data
To support a commercial recreational tree climb facility that provides community benefit, supports use of the Park Lands, and is safe and fit for purpose	The commercial outdoor recreational tree climb is safe and fit for purpose	Routine daily inspections and annual monitoring of the health of the relevant trees to maintain safety of the facility, in accordance with the lease agreement

In addition, the overarching objectives, targets and measures for the Adelaide Park Lands ([Section 10](#)) also apply to Blue Gum Park / Kurangga (Park 20).

A20.6 Management proposals

- Support the upgrade of the BMX facility with regard to the City Dirt Master Plan as endorsed by Council, consistent with the purpose for which the land is held.
- Support landscape improvements which better accommodate increased foot traffic around facilities.

A20.7 Restrictions on public use and movement

- Restrictions apply during programmed sporting times for the clubroom leaseholder in the sporting fields/courts/licence areas.

ANNEXURE 21 – VEALE PARK / WALYU YARTA (PARK 21)

A1.1 Identification of the land

Name of park	Certificate of Title Register Book Volume / Folio Number
Veale Park / Walyu Yarta (Park 21)	CR 6102/717 (See the Community Land Register)

A21.2 Park Context

Veale Park / Walyu Yarta (Park 21) is a diverse landscape that offers a range of activities and uses. These include formal gardens, a commercial function centre / restaurant, a community garden and sporting fields and courts. Two clubrooms support the sporting activities. Remotely piloted aircraft (RPAs) are also able to be flown in the park [under permit](#). The Park Lands Trail runs along the northern boundary of the park.

The Park will continue to meet the sporting and other recreation needs of the community in attractive wide open spaces surrounded by large shady trees within an open woodland character, while supporting the unique landscape setting and events use of Veale Gardens as well as the community garden.

A large section of the park is a Key Biodiversity Area.

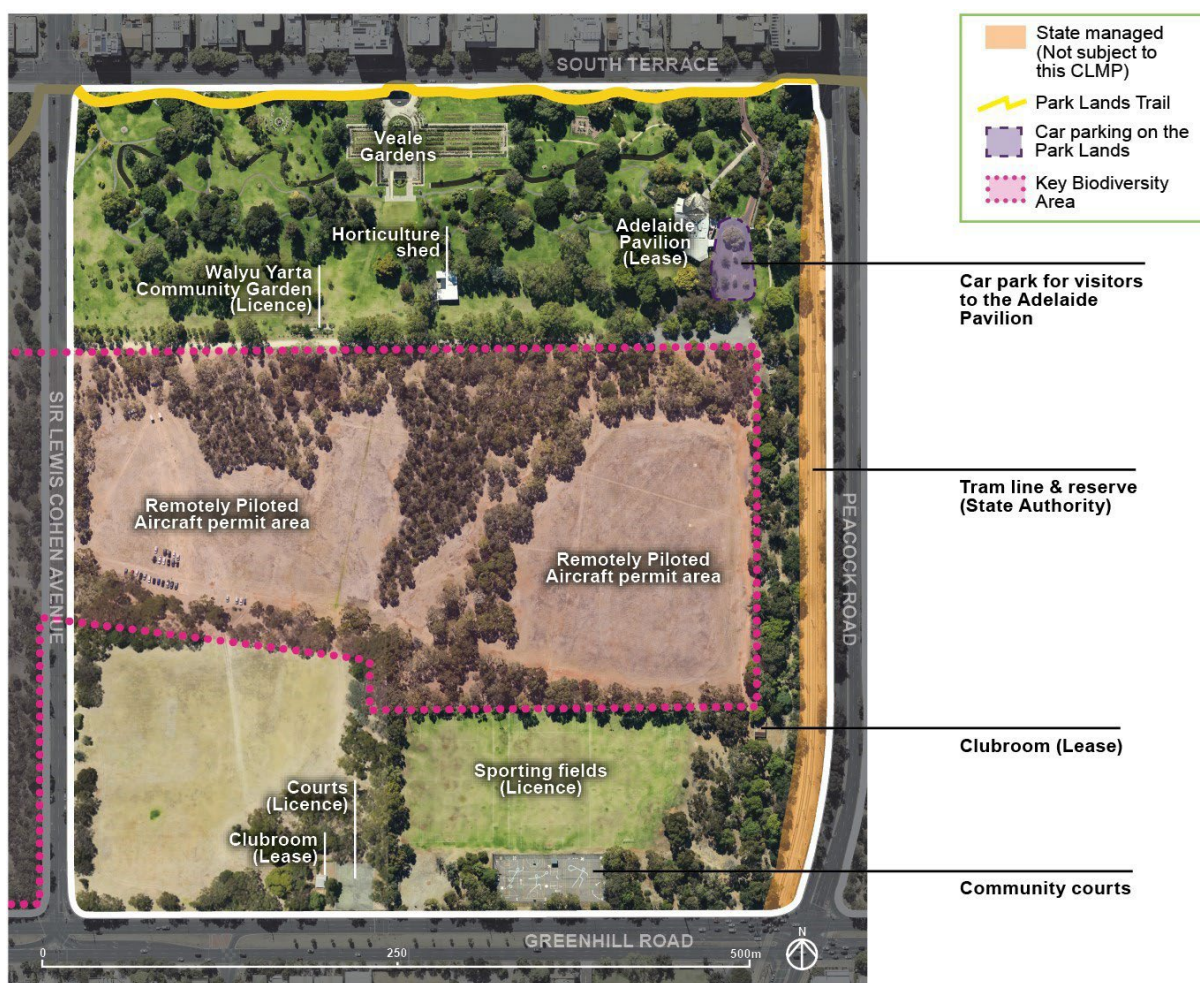


Figure 23. Map of Veale Park / Wayu Yarta (Park 21) (source: MetroMap Aerial Imagery 2023)

A21.3 Owner / Custodian

- Owner: The Crown in the right of the State
- Custodian: The Corporation of the City of Adelaide

A21.4 Purpose for which the land is held

In addition to the overall purpose for which the Adelaide Park Lands are held (as outlined in Section 5), the land is held for the purpose of:

- Providing for informal recreation, in the form of the Veale Gardens.
- Providing areas for the flying of remotely piloted aircraft ([including model aircraft, radio-controlled planes and drones, under permit](#)).
- Providing sporting fields, courts and a community garden.
- Providing commercial (hospitality) facilities.
- Providing a venue for temporary events.
- Protecting the Key Biodiversity Area in this park.
- Providing a section of the Park Lands Trail.
- Providing public facilities, furniture and amenities to support the purpose for which the land is held under A21.4.

A21.5 Objectives, Targets and Measures for managing the land

The following objectives, targets and measures apply to Veale Park / Walyu Yarta (Park 21):

Objectives	Targets	Measures
To provide an area in which Remotely Piloted Aircraft (RPAs) may be flown safely	A safe area for the flying of RPAs is provided, in accord with Civil Aviation Safety Authority (CASA) requirements	Appropriate signage is in place and is maintained to meets the required community and technical levels of service in the Asset Management Plan for Urban Elements as measured by inspections, condition audits of the signs, customer satisfaction surveys and customer request data Groups using the area do so under permit and are registered with CASA to operate RPAs in the areas designated

In addition, the overarching objectives, targets and measures for the Adelaide Park Lands ([Section 10](#)) also apply to Veale Park / Walyu Yarta (Park 21).

A21.6 Management proposals

- Support proposals that are consistent with the purpose for which the land is held.

A21.7 Restrictions on public use and movement

- Operators of remotely piloted aircraft must adhere to [CASA regulations](#).

Community Land Management Plan

- Restrictions apply during programmed sporting times for the clubroom leaseholder in the sporting fields/licence areas.
- Access to the restaurant is restricted to its opening hours.

ANNEXURE 22 – GOLDEN WATTLE PARK / MIRNU WIRRA (PARK 21W)

A22.1 Identification of the land

Name of park	Certificate of Title Register Book Volume / Folio Number
Golden Wattle Park / Mirnu Wirra (Park 21W)	CR 6102/717 (See the Community Land Register)

A22.2 Park Context

A pedestrian avenue of Sugar Gums, part of the Park Lands Trail, runs diagonally across Golden Wattle Park / Mirnu Wirra (Park 21W) separating the gardens and sporting fields from the Key Biodiversity Area. The Princess Elizabeth Playspace, developed in 1927, includes the original red brick shelter which is listed on the State Heritage Register. A clubroom and storeroom support use of the sporting fields.

The name 'Golden Wattle' relates to the historic planting of wattle trees, the first of which was established on the eastern edge of the park in 1915 to commemorate the landing of Australian troops at Gallipoli.

The Park will continue to meet the sporting and other recreation needs of the community in attractive wide open spaces surrounded by large shady trees within an open woodland character, while supporting the unique landscape setting and events use of Veale Gardens as well as the community garden.

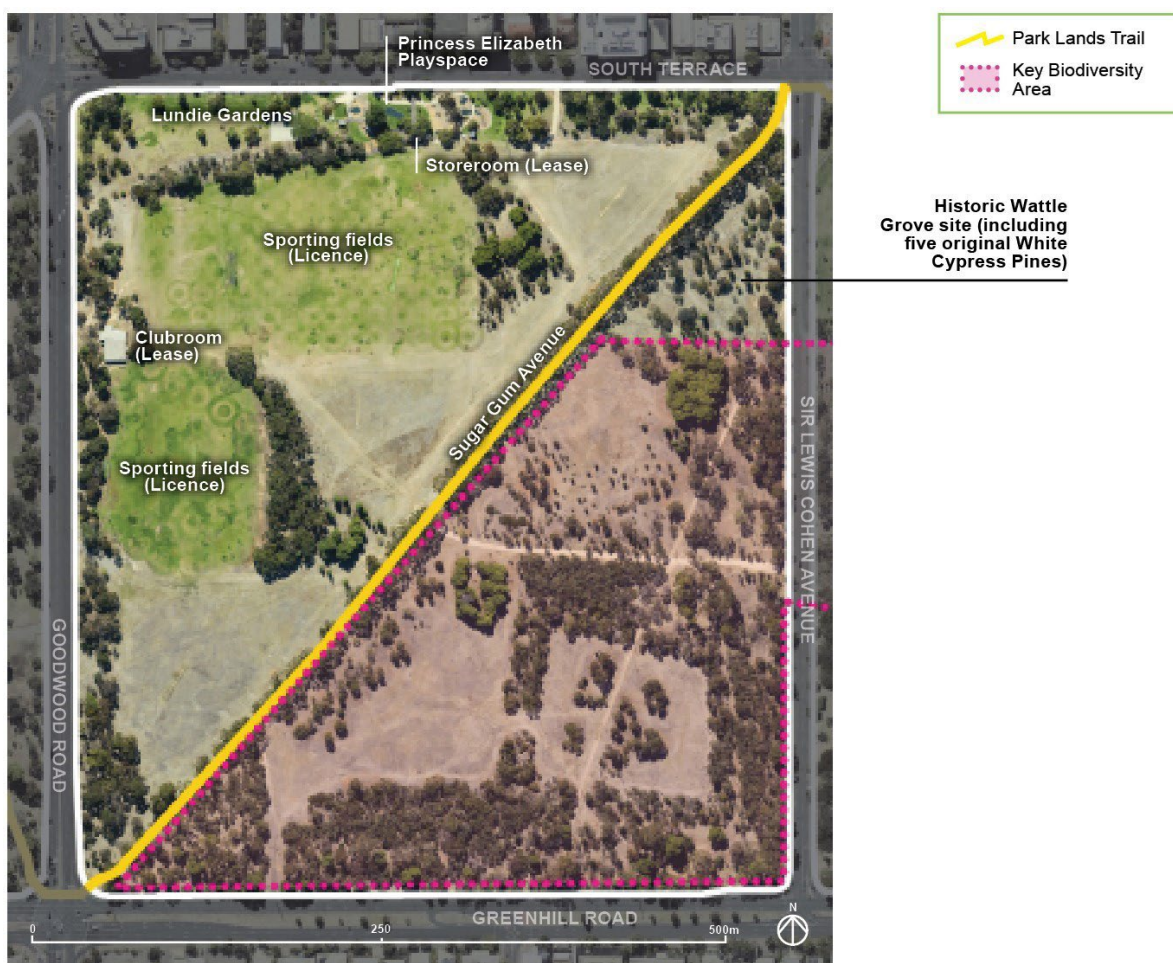


Figure 24. Map of Golden Wattle Park / Mirnu Wirra (Park 21W) (source: MetroMap Aerial Imagery 2023)

A22.3 Owner / Custodian

- Owner: The Crown in the right of the State
- Custodian: The Corporation of the City of Adelaide

A22.4 Purpose for which the land is held

In addition to the overall purpose for which the Adelaide Park Lands are held (as outlined in Section 5), the land is held for the purpose of:

- Providing for informal recreation, in the form of the Lundie Gardens and a playspace.
- Providing sporting fields and fit for purpose support facilities.
- Protecting and enhancing the Key Biodiversity Area in this park.
- Providing a section of the Park Lands Trail.
- Providing public facilities, furniture and amenities to support the purpose for which the land is held under A22.4.

A22.5 Objectives, Targets and Measures for managing the land

The overarching objectives, targets and measures for the Adelaide Park Lands ([Section 10](#)) apply to Golden Wattle Park / Mirnu Wirra (Park 21W).

A22.6 Management proposals

- Support the proposals in the [Golden Wattle Park / Mirnu Wirra \(Park 21W\) Concept Plan](#) as endorsed by Council, consistent with the purpose for which the land is held.

A22.7 Restrictions on public use and movement

- Restrictions apply during programmed sporting times for the clubroom leaseholder in the sporting fields/licence areas.

ANNEXURE 23 – JOSIE AGUIS PARK / WIKAPARNTU WIRRA (PARK 22)

A23.1 Identification of the land

Name of park	Certificate of Title Register Book Volume / Folio Number
Josie Agius Park / Wikaparntu Wirra (Park 22)	CR 6102/704 (See the Community Land Register)

A23.2 Park Context

Josie Agius Park / Wikaparntu Wirra (Park 22) is the key netball facility within the Adelaide Park Lands, incorporating a clubroom and more than 20 netball courts. The park is named after Josie Agius (1934 - 2015) one of South Australia's first Aboriginal health workers and a strong supporter of netball.

Temporary car parking is provided during the Royal Adelaide Show for visitors under a Deed of Agreement with the Royal Agricultural and Horticultural Society of South Australia.

The Park will continue to meet the sporting and other recreation needs of the community in attractive wide open spaces surrounded by large shady trees within an open woodland character. Areas of remnant vegetation are located along the northern and southern edges of the park.

The Park Lands Trail runs through the centre of the park.

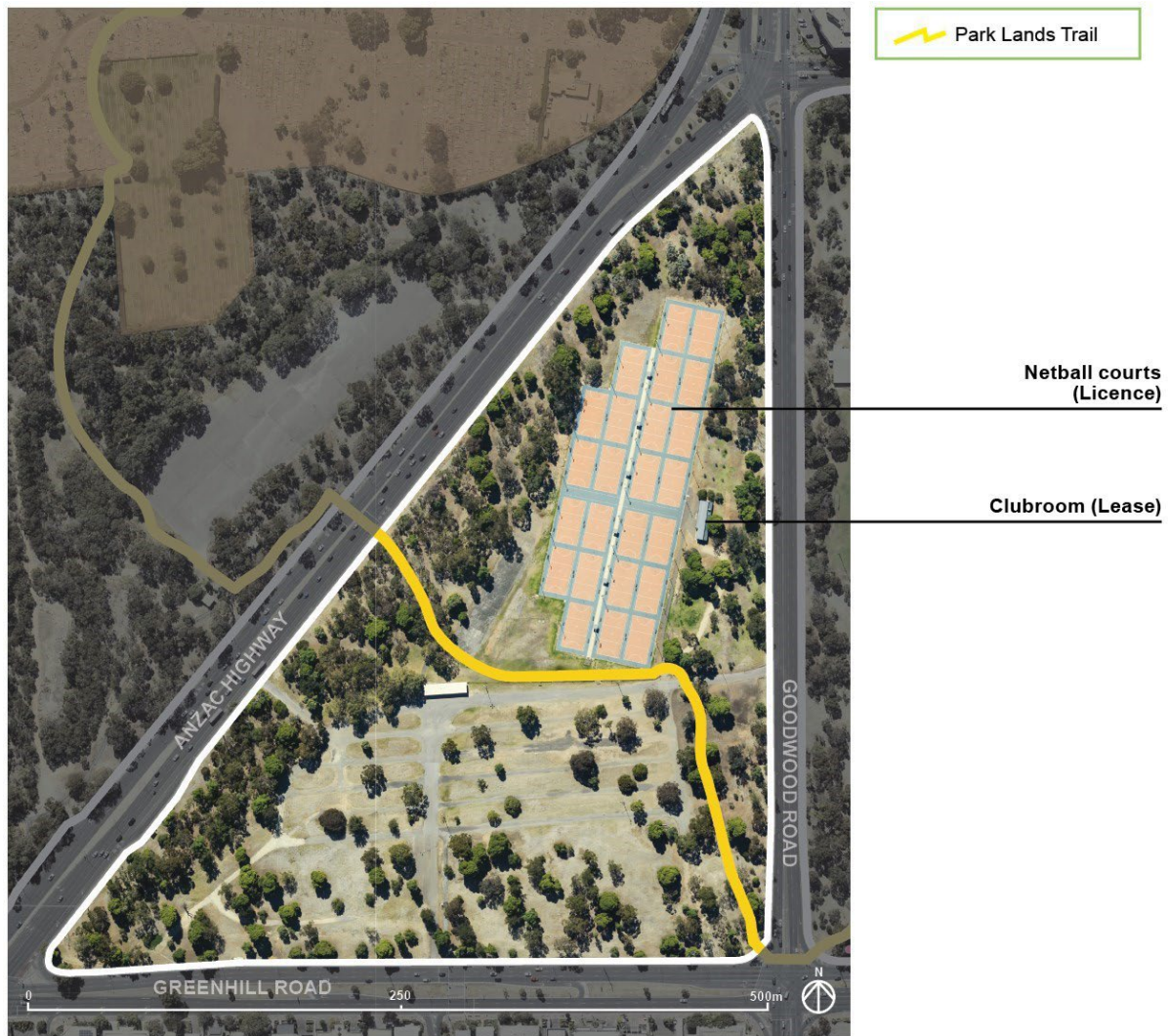


Figure 25. Map of Josie Agius Park / Wikaparntu Wirra (Park 23) (source: MetroMap Aerial Imagery 2023)

A23.3 Owner / Custodian

- Owner: The Crown in the right of the State
- Custodian: The Corporation of the City of Adelaide

A23.4 Purpose for which the land is held

In addition to the overall purpose for which the Adelaide Park Lands are held (as outlined in Section 5), the land is held for the purpose of:

- Providing netball courts.
- Providing a section of the Park Lands Trail.
- Providing public facilities, furniture and amenities to support the purpose for which the land is held under A23.4.

A23.5 Objectives, Targets and Measures for managing the land

The overarching objectives, targets and measures for the Adelaide Park Lands ([Section 10](#)) apply to Josie Agius Park / Wikaparntu Wirra (Park 22).

A23.6 Management proposals

- Support proposals that are consistent with the purpose for which the land is held.

A23.7 Restrictions on public use and movement

- Restrictions apply during programmed sporting times for the clubroom leaseholder in the sporting fields/licence areas.
- Restrictions may apply when the Royal Adelaide Show is in operation and the area is being used for vehicle parking as per the Deed of Agreement.

ANNEXURE 24 – GS KINGSTON PARK / WIRRARNINTHI (PARK 23)

A24.1 Identification of the land

Name of park	Certificate of Title Register Book Volume / Folio Number
GS Kingston Park / Wirrarninthe (Park 23)	CR 6102/717, CR 5754/517, CR 6102/722, CR 6125/318, CR 5766/798 & CR 5667/595 (See the Community Land Register)

A24.2 Park Context

GS Kingston Park / Wirrarninthe (Park 23) features a biodiversity area, incorporating a wetland/ stormwater retention basin, the Wirrarninthe Interpretive Trail and associated public art. The park also features a sporting field, a clubroom, the West Terrace Playspace, Edwards Park and Kingston Gardens which includes a rotunda.

The Park will continue to meet the recreation and socialising needs of the community with wide open spaces surrounded by large shady trees and dense understory vegetation within an open woodland character. The Park Lands Trail runs through the centre of the park.

Community Land Management Plan

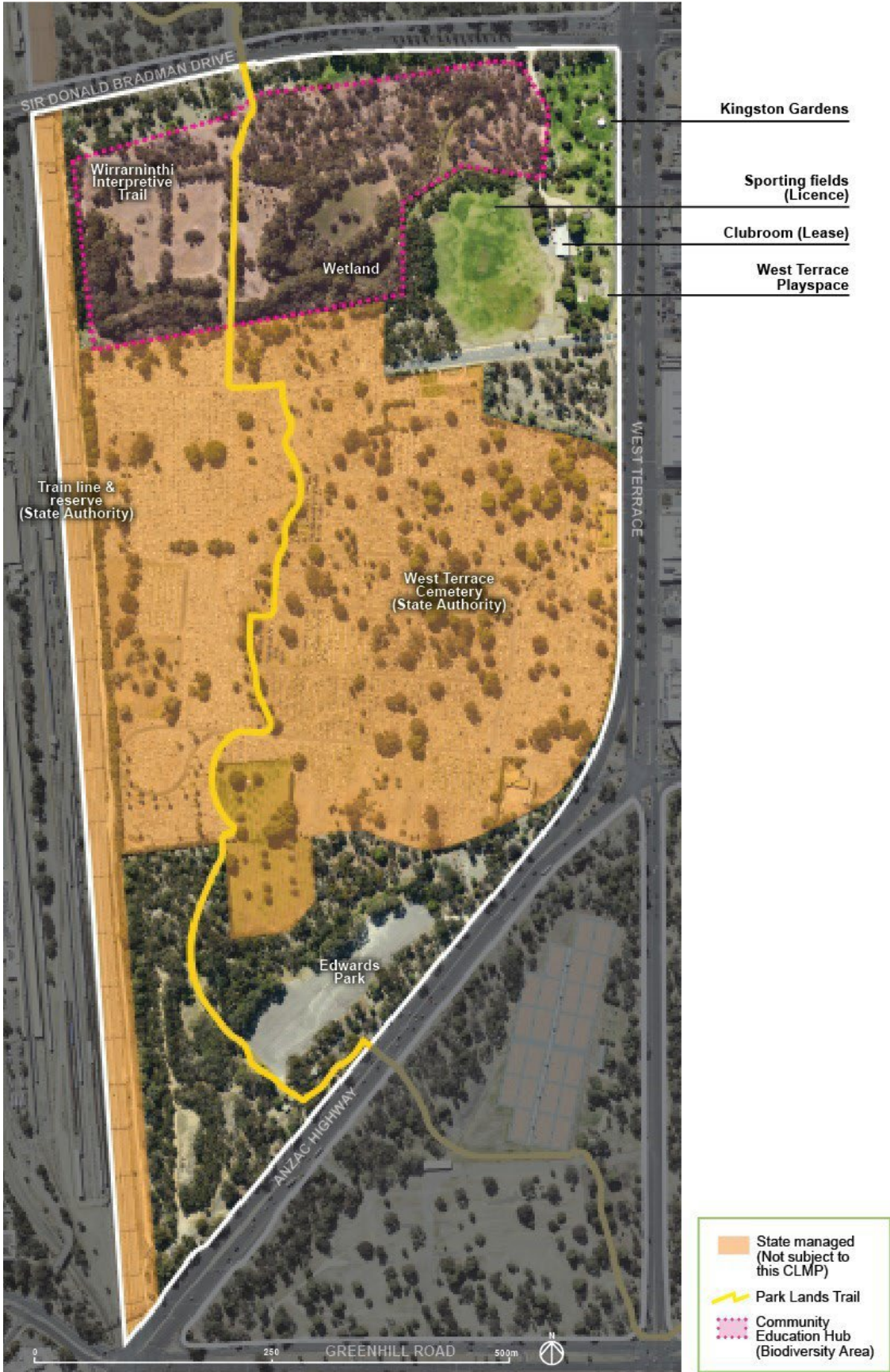


Figure 26. Map of GS Kingston Park / Wirranintheni (Park 23) (source: MetroMap Aerial Imagery 2023)

A24.3 Owner / Custodian

- Owner: The Crown in the right of the State
- Custodian: The Corporation of the City of Adelaide

A24.4 Purpose for which the land is held

In addition to the overall purpose for which the Adelaide Park Lands are held (as outlined in Section 5), the land is held for the purpose of:

- Providing for informal recreation, including Kingston Gardens and a playspace.
- Providing sporting fields.
- Protecting and managing the Wirrarninthe Community Education Hub biodiversity area in this park.
- Providing a section of the Park Lands Trail.
- Providing public facilities, furniture and amenities to support the purpose for which the land is held under A24.4.

A24.5 Objectives, Targets and Measures for managing the land

The overarching objectives, targets and measures for the Adelaide Park Lands ([Section 10](#)) apply to GS Kingston Park / Wirrarninthe (Park 23).

A24.6 Management proposals

- Support proposals that are consistent with the purpose for which the land is held.

A24.7 Restrictions on public use and movement

- Restrictions apply during programmed sporting times for the clubroom leaseholder in the sporting fields/licence areas.

ANNEXURE 25 – ELLIS PARK / TAMPAWARDLI (PARK 24)

A25.1 Identification of the land

Name of park	Certificate of Title Register Book Volume / Folio Number
Ellis Park / Tampawardli (Park 24)	CR 6102/722, CT 6102/724 & CR 5754/509 (See the Community Land Register)

A25.2 Park Context

Ellis Park / Tampawardli (Park 24) is predominantly used for sport and recreation purposes. The park features clubrooms and a number of sporting fields, courts and ancillary facilities, most of which are leased and licensed to Adelaide High School situated in the north-east corner of the park.

The Park will continue to meet the sporting and other recreation needs of the community, in particular the proposed major event space, in attractive wide open spaces surrounded by large shady trees within an open woodland character.

The Park Lands Trail runs close to the western boundary of the park. The weather station site is leased to the Bureau of Meteorology.

A detention basin located to the west of the park assists in managing stormwater. There are revegetation and remnant vegetation areas in the park.

The park contains the original site of Emigration Square, which housed early settlers in the 1830s and features the remnants of an early brick well.

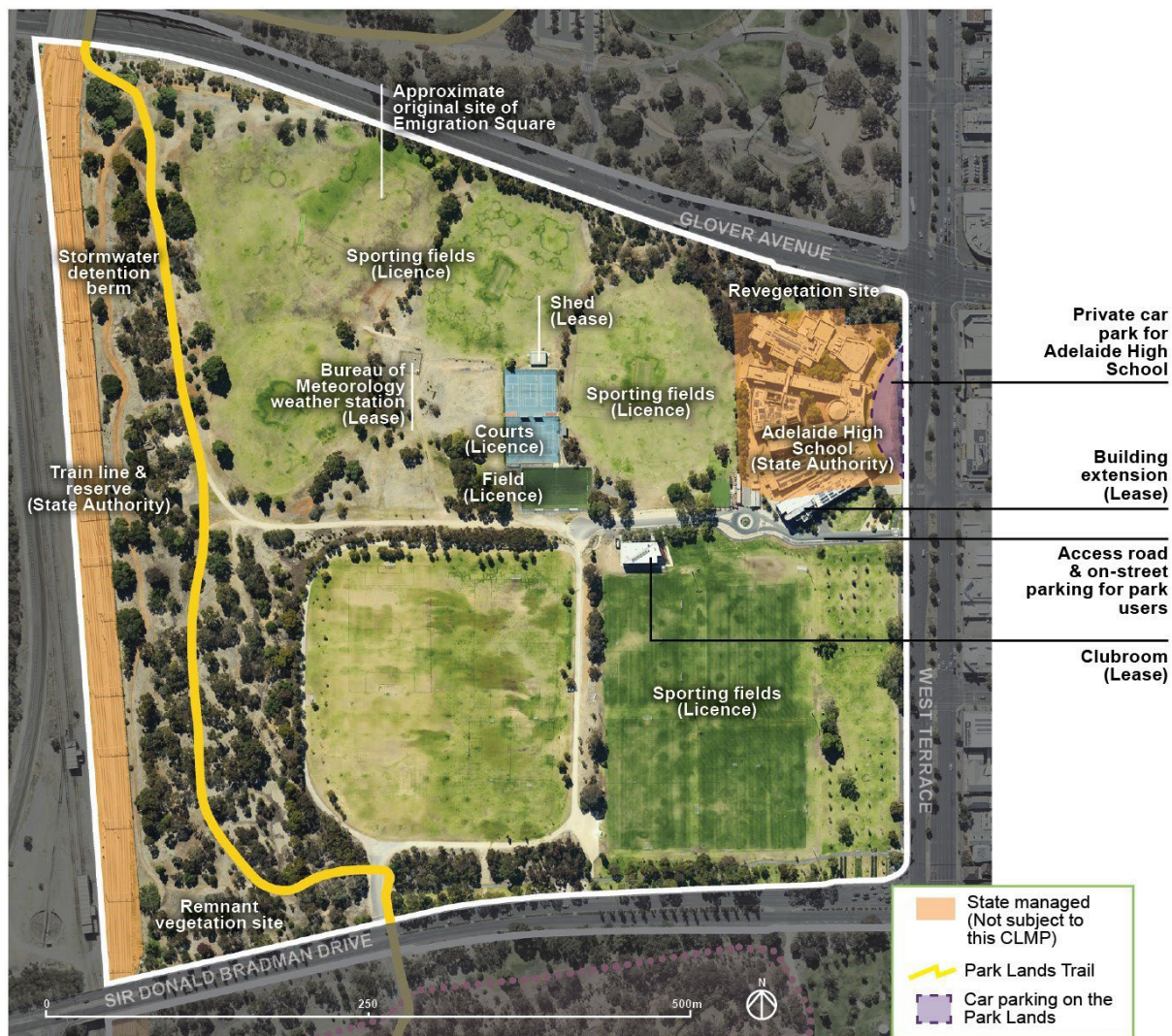


Figure 27. Map of Ellis Park / Tampawardli (Park 24) (source: MetroMap Aerial Imagery 2023)

A25.3 Owner / Custodian

- Owner: The Crown in the right of the State
- Owner: The Corporation of the City of Adelaide
- Custodian: The Corporation of the City of Adelaide

A25.4 Purpose for which the land is held

In addition to the overall purpose for which the Adelaide Park Lands are held (as outlined in Section 5), the land is held for the purpose of:

- Providing sporting fields and courts.
- Providing a venue for temporary events.
- Providing a site for the Bureau of Meteorology weather station.
- Providing a section of the Park Lands Trail.
- Providing public facilities, furniture and amenities to support the purpose for which the land is held under A25.4.

A25.5 Objectives, Targets and Measures for managing the land

The overarching objectives, targets and measures for the Adelaide Park Lands ([Section 10](#)) apply to Ellis Park / Tampawardli (Park 24).

A25.6 Management proposals

- Supports proposals that are consistent with the purpose for which the land is held.

A25.7 Restrictions on public use and movement

- Restrictions apply during programmed sporting times for the clubroom leaseholder in the sporting fields/licence areas.

ANNEXURE 26 – GLADYS ELPHICK PARK / NARNUNGGA (PARK 25)

A26.1 Identification of the land

Name of park	Certificate of Title Register Book Volume / Folio Number
Gladys Elphick Park / Narnungga (Park 25)	CR 6112/377, CR 6112/475 & CR 6166/588 (See the Community Land Register)

A26.2 Park Context

Gladys Elphick Park / Narnungga (Park 25) offers a range of sporting and recreation activities and ancillary facilities, including sporting fields and a sports pavilion / changeroom. The City Skate Park is a feature of the eastern section of the park while the Park Lands Trail winds through the western section.

The Park will continue to meet the sporting and other recreation needs of the community, in particular the proposed major event space, in attractive wide open spaces surrounded by large shady trees within an open woodland character.

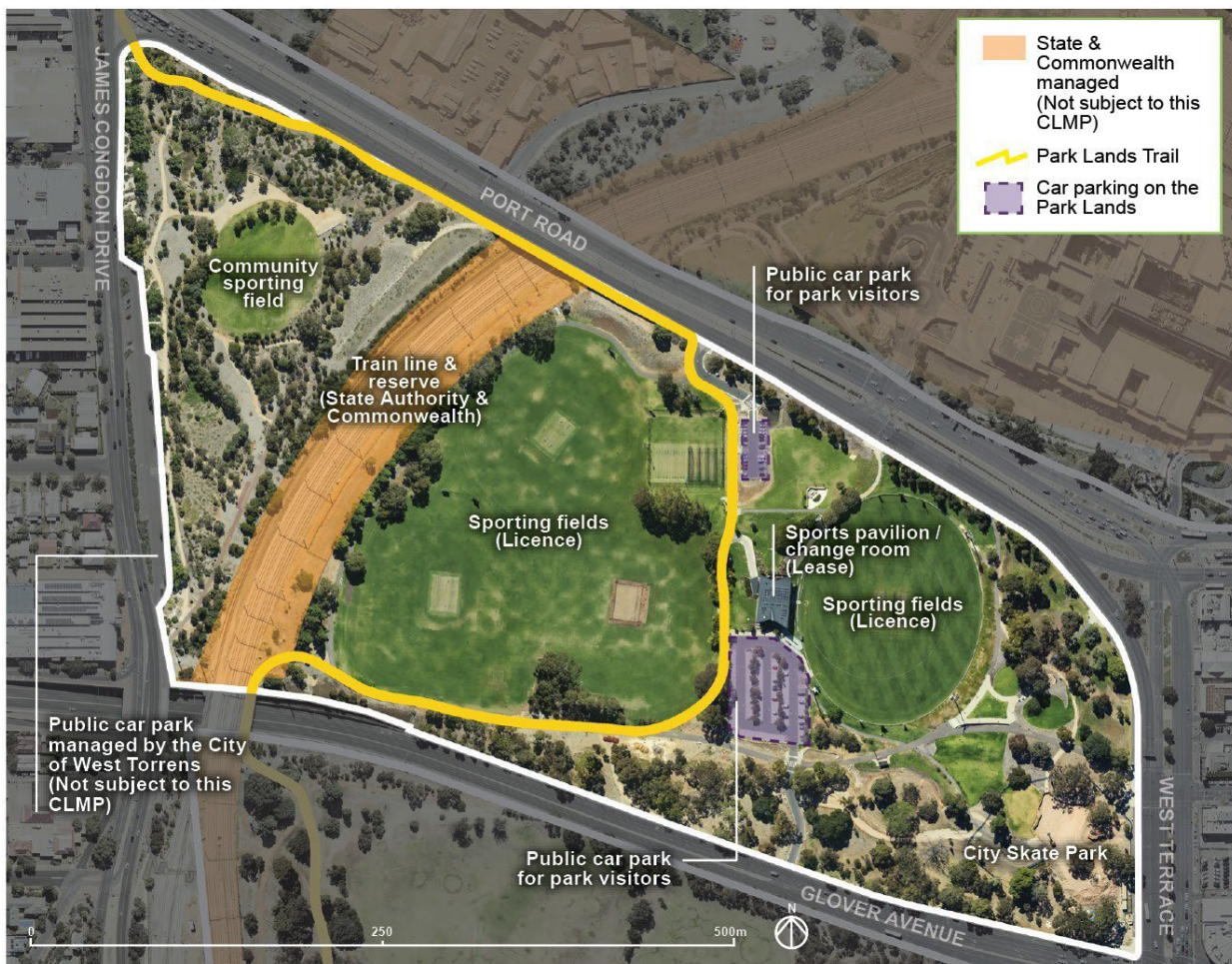


Figure 28. Map of Gladys Elphick Park / Narnungga (Park 25) (source: MetroMap Aerial Imagery 2023)

A26.3 Owner / Custodian

- Owner: The Crown in the right of the State
- Custodian: The Corporation of the City of Adelaide

A26.4 Purpose for which the land is held

In addition to the overall purpose for which the Adelaide Park Lands are held (as outlined in Section 5), the land is held for the purpose of:

- Providing a community skate park.
- Providing sporting fields.
- Providing a venue for temporary events.
- Providing a section of the Park Lands Trail.
- Providing for Narnungga Urban Forest.
- Providing public facilities, furniture and amenities to support the purpose for which the land is held under A26.4.

A26.5 Objectives, Targets and Measures for managing the land

The following objectives, targets and measures apply to Gladys Elphick Park / Narnungga (Park 25):

Objectives	Targets	Measures
To provide a skate facility that is safe and fit for purpose	The skate facility is safe and fit for purpose in accordance with the City Skate Park Design Report	Meet the required community and technical levels of service in the Asset Management Plan for Urban Elements as measured by inspections, condition audits of the skate park facilities, customer satisfaction surveys and customer request data

In addition, the overarching objectives, targets and measures for the Adelaide Park Lands ([Section 10](#)) also apply to Gladys Elphick Park / Narnungga (Park 25).

A26.6 Management proposals

- Support the proposal by the leaseholder to [create terracing to the eastern mound](#) for viewing purposes as [endorsed by Council](#) in principle, consistent with the purpose for which the land is held.

A26.7 Restrictions on public use and movement

- Restrictions apply during programmed sporting times for the clubroom leaseholder in the sporting fields/licence areas.

ANNEXURE 27 – TARNTANYA WAMA (PARK 26)

NOTE: The following section relates only to Elder Park, Barr Smith Walk and Pinky Flat within Tarntanya Wama.

Council adopted the [CLMP for the Adelaide Oval Precinct](#) in April 2021 and agreed to the CLMP with the Minister for Infrastructure and Transport. This area's CLMP is treated separately as it is governed by the *Adelaide Oval Redevelopment and Management Act 2011*.

A27.1 Identification of the land

Name of park	Certificate of Title Register Book Volume / Folio Number
Elder Park	CR 6102/717 (See the Community Land Register)
Barr Smith Walk	CR 6102/717, CR 5754/512, CR 5220/421 & CR 5220/422 (See the Community Land Register)
Pinky Flat	CR 6144/507 (See the Community Land Register)

A27.2 Park Context

Elder Park, Barr Smith Walk and Pinky Flat form part of the wider Tarntanya Wama (Park 26).

Elder Park is an iconic riverside park situated between the city and North Adelaide. Its most recognisable feature, the State Heritage Listed rotunda, was donated by philanthropist Sir Thomas Elder in 1882. Originally known as Rotunda Park, the park was renamed Elder Park in 1907 in recognition of his generosity.

Both Elder Park and Pinky Flat are popular event spaces that regularly host major community events and gatherings. These areas, along with Barr Smith Walk also provide the launching point for a number of licensed water-based activities such as rowing, kayak tours, paddle boats and other boating experiences. Associated facilities, such as the rowing sheds, support these activities.

The Park will continue to meet the wider sporting (including elite level) and recreational needs of the community and enhancing and improving the water quality and biodiversity values of the River Torrens / Karrawirra Pari.

Community Land Management Plan



Figure 29. Map of Elder Park, Pinky Flat and Barr Smith Walk (source: MetroMap Aerial Imagery 2023)

A27.3 Owner / Custodian

- Owner: The Crown in the right of the State
- Custodian: The Corporation of the City of Adelaide

A27.4 Purpose for which the land is held

In addition to the overall purpose for which the Adelaide Park Lands are held (as outlined in Section 5), the land is held for the purpose of:

- Providing for informal recreation, including the linear trail.
- Providing water-based recreational activities and related infrastructure, including rowing sheds, rowing/kayak/paddle boat experiences, boat landings, decking and pontoons.
- Providing a venue for temporary events.
- Providing public facilities, furniture and amenities to support the purpose for which the land is held under A27.4

A27.5 Objectives, Targets and Measures for managing the land

The overarching objectives, targets and measures for the Adelaide Park Lands ([Section 10](#)) apply to Elder Park, Pinky Flat and Barr Smith Walk.

A27.6 Management proposals

- Support proposals that are consistent with the purpose for which the land is held.

A27.7 Restrictions on public use and movement

- There are no restrictions to access.

ANNEXURE 28 – BONYTHON PARK / TULYA WARDLI (PARK 27)

A28.1 Identification of the land

Name of park	Certificate of Title Register Book Volume / Folio Number
Bonython Park / Tulya Wardli (Park 27)	CR 6166/588 (See the Community Land Register)

A28.2 Park Context

Bonython Park / Tulya Wardli (Park 27) is a popular venue for large events including concerts and circuses, family picnics and other social gatherings. The area offers a range of informal recreational facilities including a playspace, model boat pond and a kiosk.

A Key Biodiversity Area is located along the river edge together with the Park Lands Trail which winds through the park.

The agistment of police horses within the 1860s Olive Grove is provided under a lease agreement with SAPOL. The presence of police horses within Bonython Park is an historic arrangement, dating back to the time the Police Barracks were constructed in 1917 to accommodate the South Australia Mounted Police. SAPOL has used the Olive Grove for agistment purposes since at least the 1970s, leading to the Police Greys becoming a well known attraction for Bonython Park visitors.

The park also incorporates the Road Safety Centre which is leased to SAPOL. This features a mock roadway designed to provide young riders with the opportunity to practise their bicycle and road safety skills.

The (State managed) Police Barracks are situated on the southern edge of the park (and not subject to this CLMP).

The Park will maintain a vibrant area that provides a diverse and accessible range of recreation opportunities, catering to a range of users within a structured landscape setting dominated by the River Torrens / Karrawirra Pari.

The State Government has introduced legislation to enable the Police Minister to relocate the horses and redevelop the new Women’s and Children’s Hospital (nWCH) on the existing Police Barracks site as shown in Figure 30. Wholesale change in this area is anticipated.

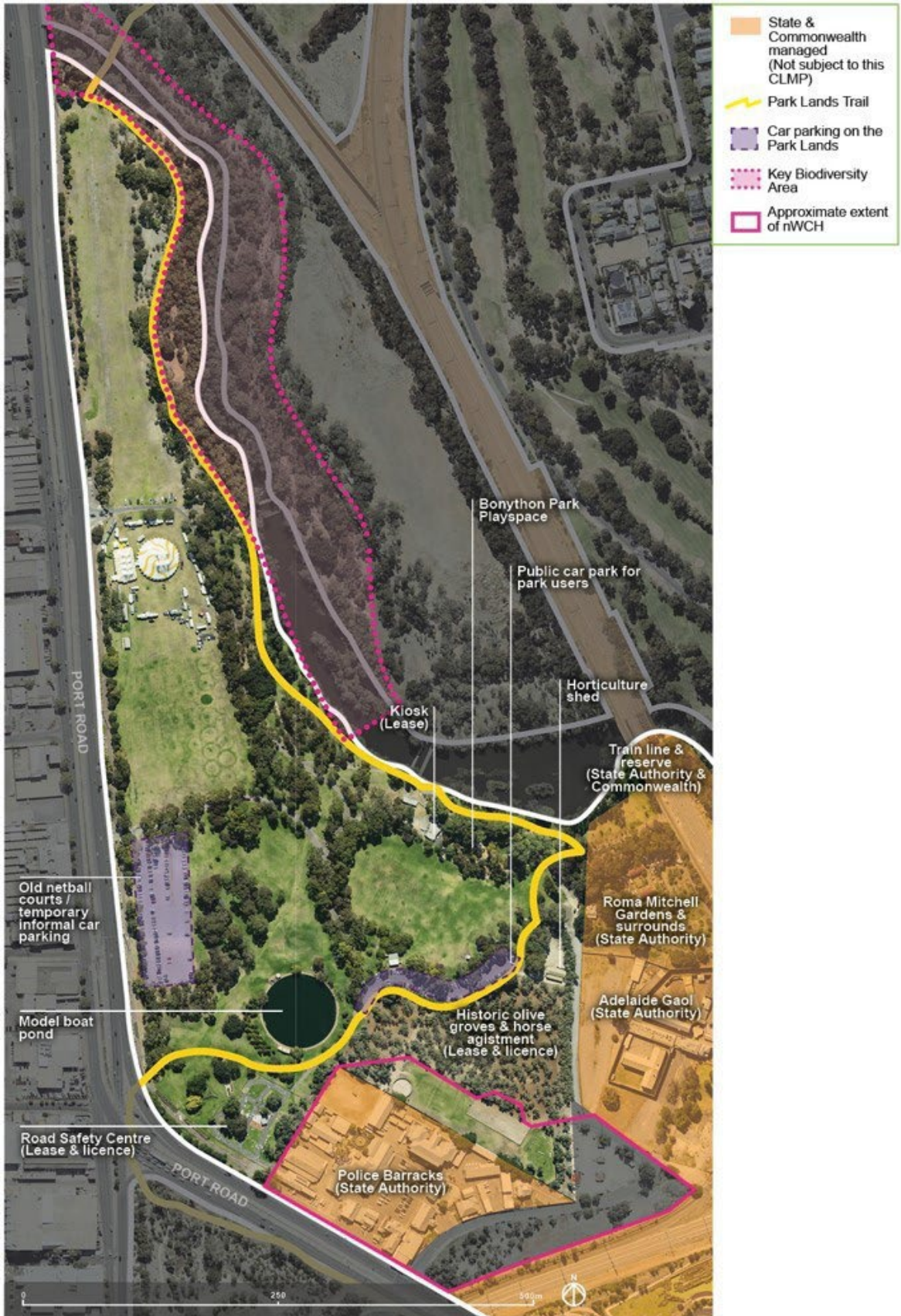


Figure 30. Map of Bonython Park / Tulya Wardli (Park 27) (source: MetroMap Aerial Imagery 2023)

A28.3 Owner / Custodian

- Owner: The Crown in the right of the State
- Custodian: The Corporation of the City of Adelaide

A28.4 Purpose for which the land is held

In addition to the overall purpose for which the Adelaide Park Lands are held (as outlined in Section 5), the land is held for the purpose of:

- Providing informal recreation, including a playspace, model boat pond, and kiosk and [SAPOL Road Safety Centre](#).
- Providing a venue for temporary events.
- Protecting the historic olive grove within a horse agistment area.
- Protecting and enhancing the Key Biodiversity Area in this park.
- Providing a section of the Park Lands Trail.
- Providing public facilities, furniture and amenities to support the purpose for which the land is held under A28.4.

A28.5 Objectives, Targets and Measures for managing the land

The following objectives, targets and measures apply to Bonython Park / Tulya Wardli (Park 27):

Objectives	Targets	Measures
To provide a safe fenced area for horse agistment and related activities with consideration of their impact to the historic olive grove and land.	<p>The agistment area is fenced to a safe and secure standard.</p> <p>The horse agistment and related activities have consideration of the historic olive grove and land.</p>	<p>Perimeter fences secure the horses and prevents unmonitored community access, to be carried out as per the lease held by SAPOL.</p> <p>The trees in the liver Groves are maintained in a healthy state as per the lease held by SAPOL.</p>

In addition, the overarching objectives, targets and measures for the Adelaide Park Lands ([Section 10](#)) also apply to Bonython Park / Tulya Wardli (Park 27).

A28.6 Management proposals

- Support the preservation of the olive groves and trees in Bonython Park as [endorsed by Council](#) (refer page 10 in linked document), consistent with their historic significance.
- Support the repurposing of the former netball courts into a beach volleyball facility [as noted by Council](#), or other Park Lands purpose, consistent with the purpose for which the land is held.
- Support the redevelopment of the nWCH.
- The removal of the SAPOL Road Safety Centre buildings.

A28.7 Restrictions on public use and movement

- Public access to the Olive Groves adjacent the Police Barracks (leased to SAPOL) is prohibited unless permitted by SAPOL.

- Access to the Road Safety Centre (leased to SAPOL) may be restricted when it is booked for training sessions.

ANNEXURE 29 – KATE COCKS PARK

A29.1 Identification of the land

Name of park	Certificate of Title Register Book Volume / Folio Number
Kate Cocks Park	CR 6166/588 (See the Community Land Register)

A29.2 Park Context

Located between the Police Barracks, train reserve and (former) Adelaide Gaol, Kate Cocks Park is a small park that forms part of the wider Park 27.

The future use of this land will support the development of the New Women’s and Childrens Hospital.

State Government has introduced legislation to enable the redevelopment of the new Women’s and Children’s Hospital (nWCH) on a site that incorporates all of this park. Once developed, this site will no longer be subject to this CLMP and be subject to a State Management Plan in accordance with Section 20 of the *Adelaide Park Lands Act 2005*.

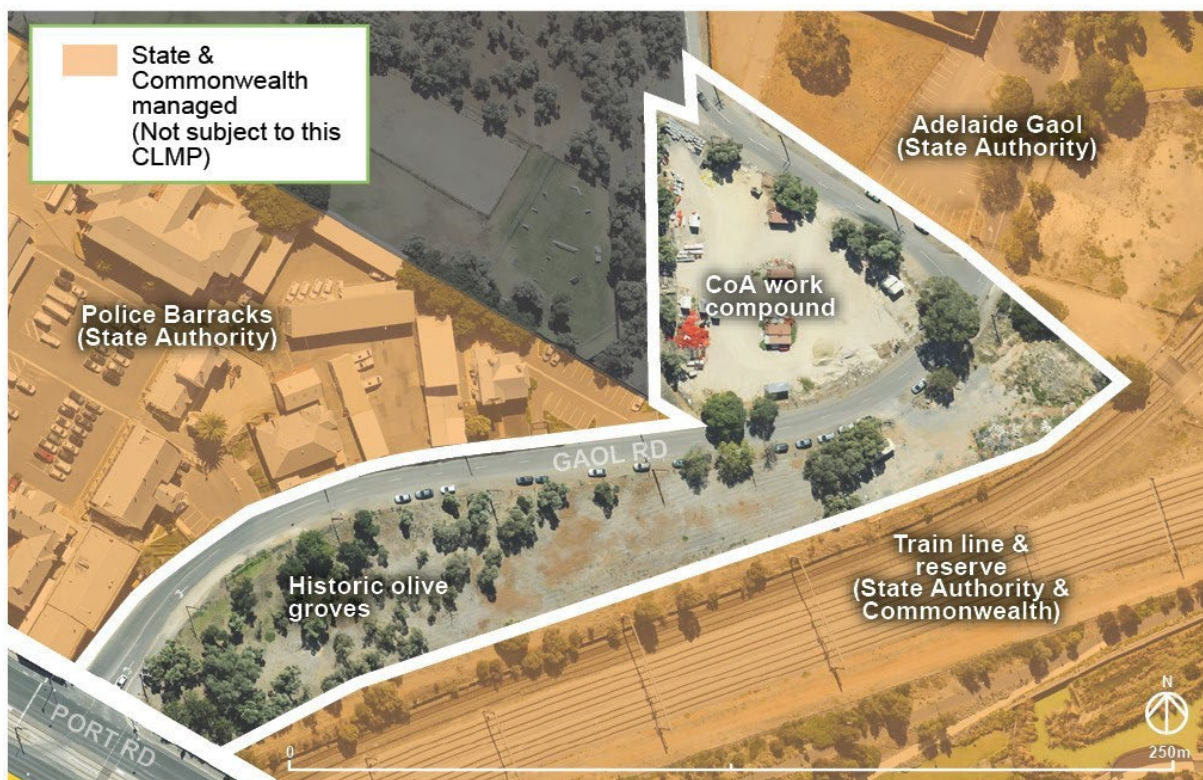


Figure 31. Map of Kate Cocks Park (source: MetroMap Aerial Imagery 2023)

A29.3 Owner / Custodian

- Owner: The Crown in the right of the State
- Custodian: The Corporation of the City of Adelaide

A29.4 Purpose for which the land is held

In addition to the overall purpose for which the Adelaide Park Lands are held (as outlined in Section 5), the land is held for the purpose of:

- Providing green, open space for outdoor recreation
- Providing a site for the future nWCH.
- Providing public facilities, furniture and amenities to support the purpose for which the land is held under A29.4.

A29.5 Objectives, Targets and Measures for managing the land

The overarching objectives, targets and measures for the Adelaide Park Lands ([Section 10](#)) apply to Kate Cocks Park.

A29.6 Management proposals

- Support proposals to improve the landscape of Kate Cocks Park consistent with the purpose for which the park is held.
- Support the redevelopment of the nWCH.
- Relocation of the CoA work compound.

A29.7 Restrictions on public use and movement

- There are no restrictions to access.

ANNEXURE 30 – HELEN MAYO PARK

A30.1 Identification of the land

Name of park	Certificate of Title Register Book Volume / Folio Number
Helen Mayo Park	CR 5754/514, CR 6102/700, CR 5765/293, CR 6102/701 CR 6161/289 (See the Community Land Register)

A30.2 Park Context

Bordered by the River Torrens / Karrawirra Pari, the rail lines and Montefiore Road, Helen Mayo Park forms part of the wider Park 27.

The Park will continue to meet the wider recreational needs of the community and enhancing and improving the water quality and biodiversity values of the River Torrens / Karrawirra Pari.

The park incorporates two rowing sheds and ancillary facilities. This area (shown in Figure 33) is currently under the care, control and management of the State Government, and will be returned to the CoA.

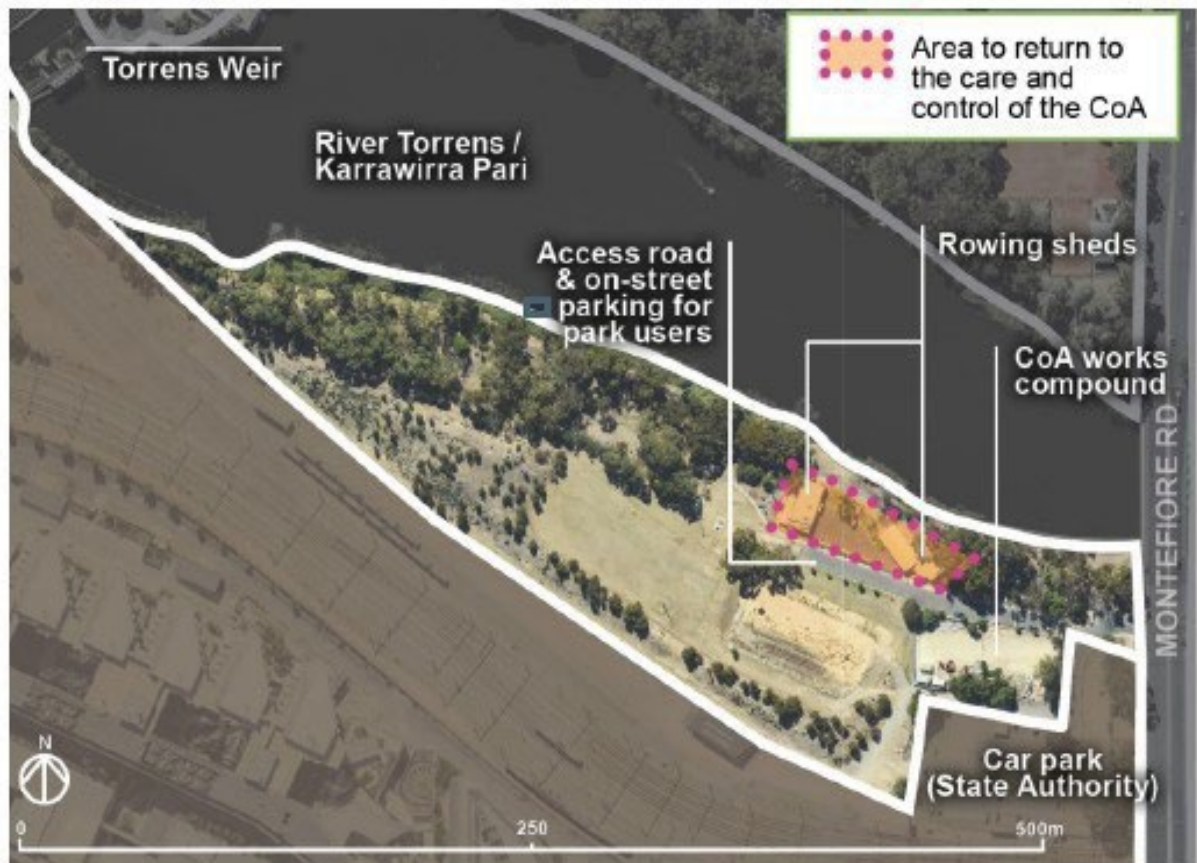


Figure 32. Map of Helen Mayo Park (source: MetroMap Aerial Imagery 2023)

A30.3 Owner / Custodian

- Owner: The Crown in the right of the State
- Custodian: The Corporation of the City of Adelaide

A30.4 Purpose for which the land is held

In addition to the overall purpose for which the Adelaide Park Lands are held (as outlined in Section 5), the land is held for the purpose of:

- Providing green, open space for outdoor recreation.
- Providing public facilities, furniture and amenities to support the purpose for which the land is held under A30.4.

A30.5 Objectives, Targets and Measures for managing the land

The overarching objectives, targets and measures for the Adelaide Park Lands ([Section 10](#)) apply to Helen Mayo Park.

A30.6 Management proposals

- Support proposals that are consistent with the purpose for which the land is held.
- Support the removal of any on-site contamination.
- Support the master planning and redevelopment of Helen Mayo Park.

A30.7 Restrictions on public use and movement

- There are no restrictions to access.

ANNEXURE 31 – JOHN E BROWN PARK (PARK 27A)

A31.1 Identification of the land

Name of park	Certificate of Title Register Book Volume / Folio Number
John E Brown Park (Park 27A)	CR 6144/507 (See the Community Land Register)

A31.2 Park Context

Named after a famed forest conservator from the 1880s, John E Brown Park (Park 27A) is a large open park that provides connections to Bowden and the western suburbs.

The park was used for equestrian events during the early 2000s.

The Bunyip Trail, a joint initiative of the CoA and the Children’s University Adelaide, is a popular feature of the park. This short ‘loop’ trail invites discovery of the natural environment through storytelling and hands-on activities along the path.

The park includes the Deceased Workers Memorial Forest which was established in 2003 as a way of remembering those who died at their workplace.

The Park will continue to meet the wider recreational needs of the community and enhancing and improving the water quality and biodiversity values of the River Torrens / Karrawirra Pari.

The Park Lands Trail crosses the northern end of the park.

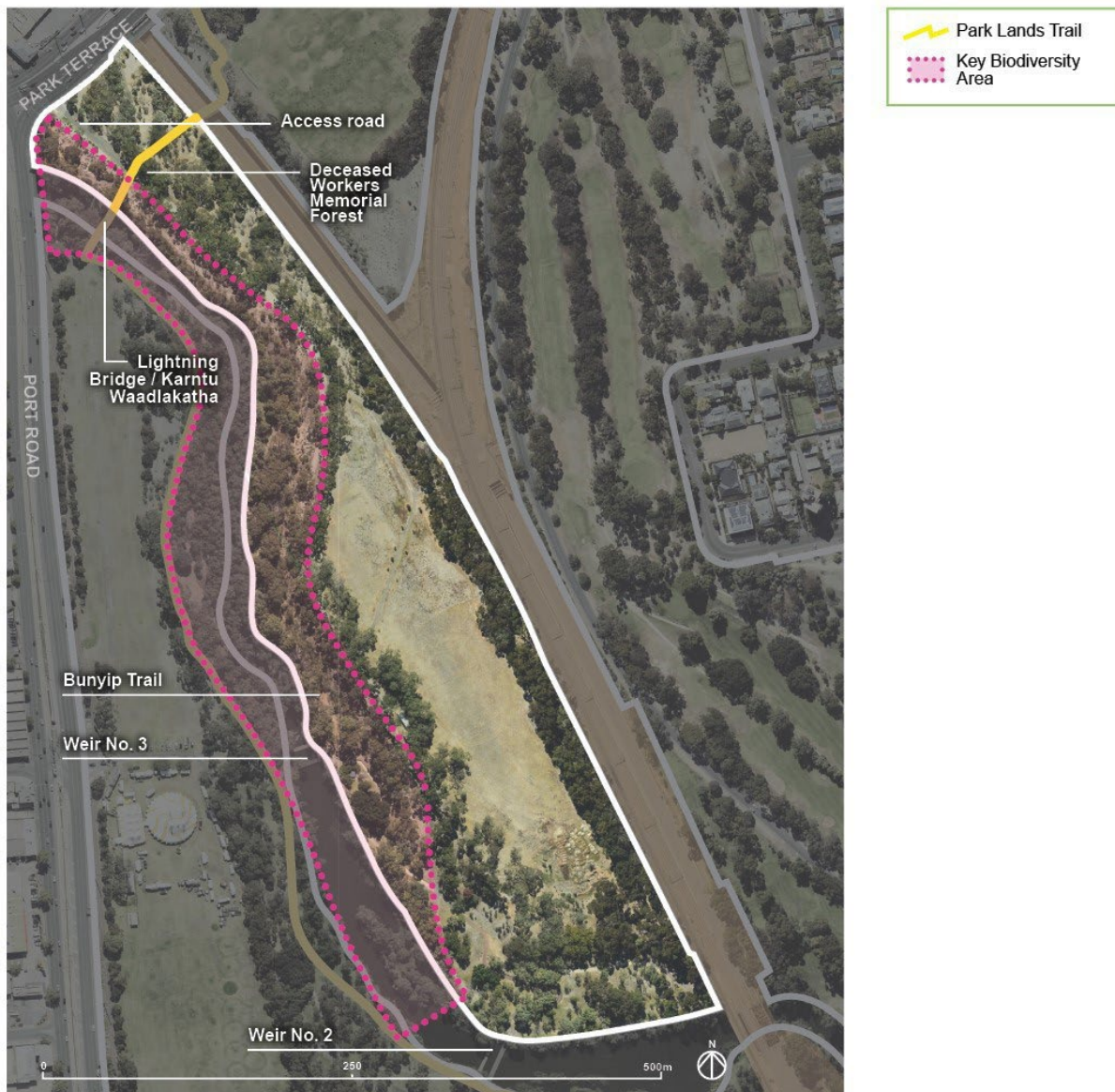


Figure 33. Map of John E Brown Park (Park 27A) (source: MetroMap Aerial Imagery 2023)

A31.3 Owner / Custodian

- Owner: The Crown in the right of the State
- Custodian: The Corporation of the City of Adelaide

A31.4 Purpose for which the land is held

In addition to the overall purpose for which the Adelaide Park Lands are held (as outlined in Section 5), the land is held for the purpose of:

- Providing for informal recreation, including the educational Bunyip Trail.
- Providing green, open space for outdoor recreation.
- Protecting and enhancing the Key Biodiversity Area in this park.
- Providing a section of the Park Lands Trail.
- Providing public facilities, furniture and amenities to support the purpose for which the land is held under A31.4.

A31.5 Objectives, Targets and Measures for managing the land

The overarching objectives, targets and measures for the Adelaide Park Lands ([Section 10](#)) apply to John E Brown Park (Park 27A).

A31.6 Management proposals

- Support proposals that are consistent with the purpose for which the land is held

A31.7 Restrictions on public use and movement

- There are no restrictions to access.

ANNEXURE 32 – MARY LEE PARK (PARK 27B)

A32.1 Identification of the land

Name of park	Certificate of Title Register Book Volume / Folio Number
Mary Lee Park (Park 27B)	CR 6144/507, CR 6102/709, CR 6102/711 (See the Community Land Register)

A32.2 Park Context

Mary Lee Park (Park 27B), located opposite Bowden, offers a range of recreation facilities including sporting fields, a clubhouse, community courts, skate park, and a playspace. The Park Terrace Community Garden is situated at the northern end of the park.

The Park will continue to meet the sporting and other recreation needs of the community, in attractive wide open spaces surrounded by large shady trees within an open woodland character.

The Park Lands Trail also crosses the park.



Figure 34. Map of Mary Lee Park (Park 27B) (source: MetroMap Aerial Imagery 2023)

A32.3 Owner / Custodian

- Owner: The Crown in the right of the State
- Custodian: The Corporation of the City of Adelaide

A32.4 Purpose for which the land is held

In addition to the overall purpose for which the Adelaide Park Lands are held (as outlined in Section 5), the land is held for the purpose of:

- Providing for informal recreation, including community courts, a skate park, a playspace and a community garden.
- Providing sporting fields.
- Providing a section of the Park Lands Trail.
- Providing public facilities, furniture and amenities to support the purpose for which the land is held under A32.4.

A32.5 Objectives, Targets and Measures for managing the land

The overarching objectives, targets and measures for the Adelaide Park Lands ([Section 10](#)) apply to Mary Lee Park (Park 27B).

A32.6 Management proposals

- Fencing will be provided for the Park Terrace Community Garden.
- Support the renewal of the existing clubrooms.

A32.7 Restrictions on public use and movement

- Restrictions apply during programmed sporting times for the clubroom leaseholder in the sporting fields/licence areas.
- For security purposes, access to the Park Terrace Community Garden may be restricted at night. The Licensee must ensure that any gates that restrict public access to the Licenced area are unlocked each morning.

ANNEXURE 33 – PALMER GARDENS / PANGKI PANGKI (PARK 28) & BROUGHAM GARDENS / TANTUTITINGGA (PARK 29)

A33.1 Identification of the land

Name of park	Certificate of Title Register Book Volume / Folio Number
Palmer Gardens / Pangki Pangki (Park 28)	CR 6144/507 (See the Community Land Register)
Brougham Gardens / Tantutitingga (Park 29)	CR 6144/507, CR 5744/254 & CR 5896/254 (See the Community Land Register)

A33.2 Park Context

Palmer Gardens / Pangki Pangki (Park 28) and Brougham Gardens / Tantutitingga (Park 29) provide the community with informal recreation open space. Both gardens retain the cross-axial pathways of the original 1870s spatial layout. Brougham Gardens includes a floral clock adjacent to King William Road.

The Park will maintain the formal gardens for recreation needs of the community.

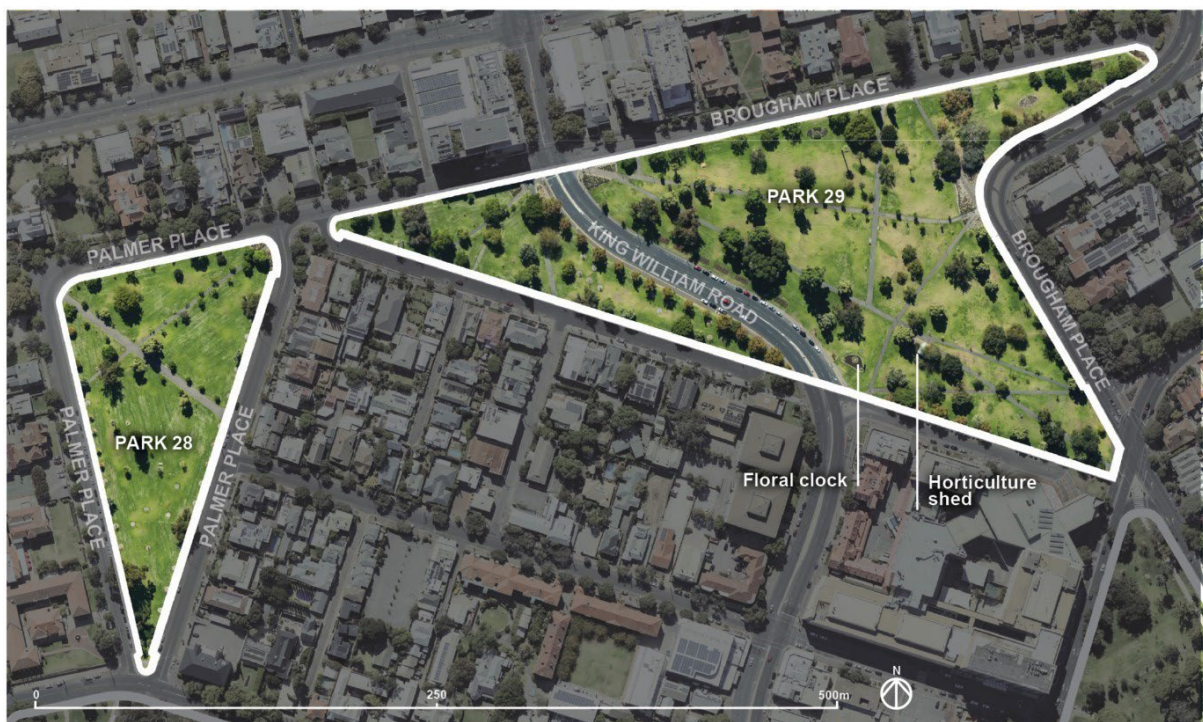


Figure 35. Map of Palmer Gardens / Pangki Pangki (Park 28 & Brougham Gardens / Tantutitingga (Park 29) (source: MetroMap Aerial Imagery 2023)

A33.3 Owner / Custodian

- Owner: The Crown in the right of the State
- Custodian: The Corporation of the City of Adelaide

Community Land Management Plan

A33.4 Purpose for which the land is held

In addition to the overall purpose for which the Adelaide Park Lands are held (as outlined in Section 5), the land is held for the purpose of:

- Providing green, open space for outdoor recreation.
- Providing public facilities, furniture and amenities to support the purpose for which the land is held under A33.4.

A33.5 Objectives, Targets and Measures for managing the land

The overarching objectives, targets and measures for the Adelaide Park Lands ([Section 10](#)) apply to Palmer Gardens / Pangki Pangki (Park 28) and Brougham Gardens / Tantutitingga (Park 29).

A33.6 Management proposals

- Support proposals that are consistent with the purpose for which the land is held.

A33.7 Restrictions on public use and movement

- There are no restrictions to access.

ANNEXURE 34 – VICTORIA SQUARE / TARNTANYANGGA

A34.1 Identification of the land

Name of park	Certificate of Title Register Book Volume / Folio Number
Victoria Square / Tarntanyangga	CR 6159/446 (See the Community Land Register)

A34.2 Park Context

Victoria Square / Tarntanyangga is the principal square and symbolic centre of the city. It has both Kurna and non-Kurna cultural significance, as represented by Reconciliation Plaza, a number of State Heritage listed places (including a statue of Queen Victoria) and the two flag poles displaying both the Australian and Aboriginal flags. The Three Rivers Fountain is located at the southern end of the square. Victoria Square is a popular space for events and informal recreation.

The Square will continue to be an accessible and vibrant public space that is internationally recognised as a symbol of South Australia's unique culture and lifestyle.

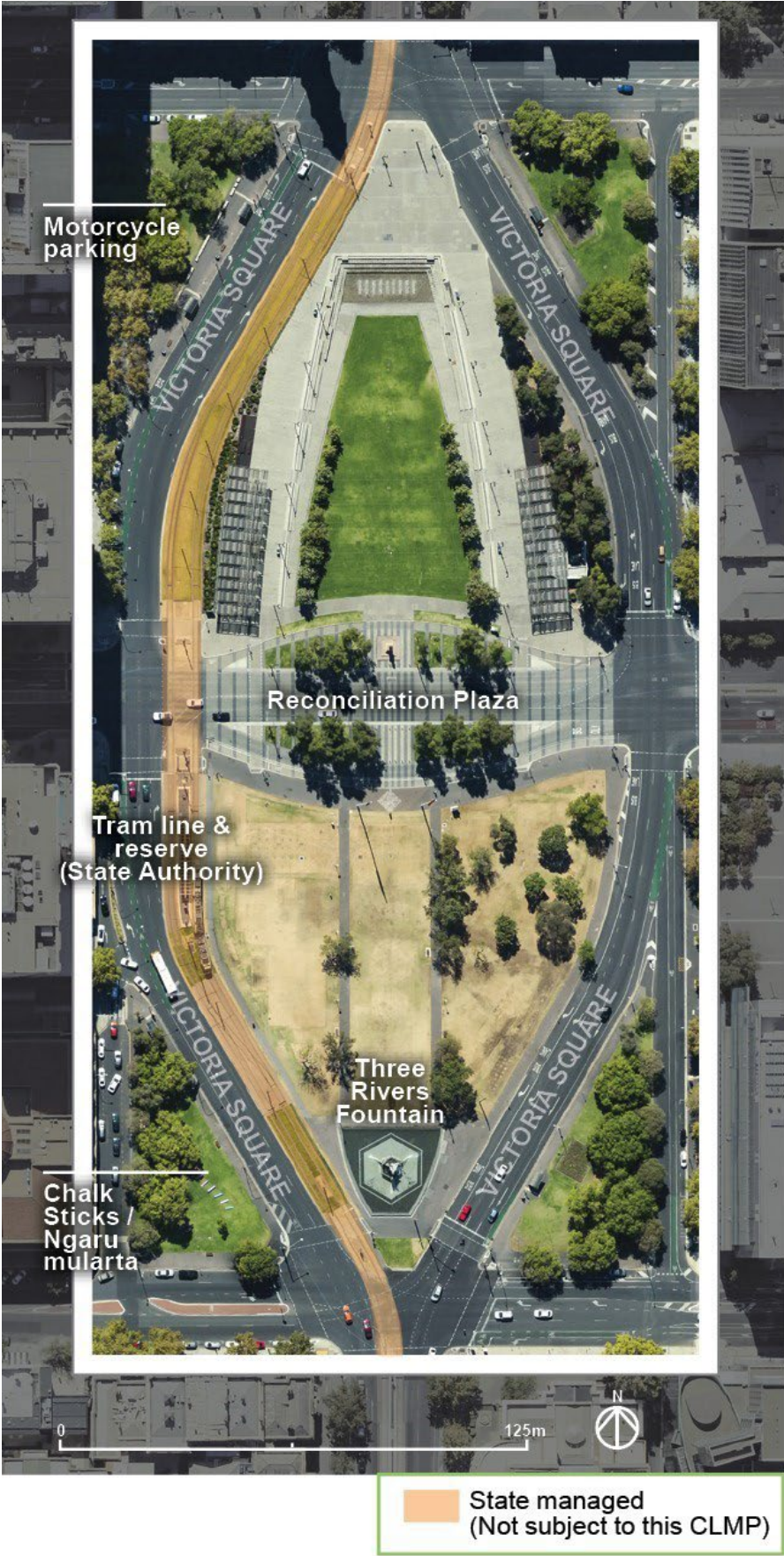


Figure 36. Map of Victoria Square / Tarntanyangga (source: MetroMap Aerial Imagery 2023)

A34.3 Owner / Custodian

- Owner: The Crown in the right of the State
- Custodian: The Corporation of the City of Adelaide

A34.4 Purpose for which the land is held

In addition to the overall purpose for which the Adelaide Park Lands are held (as outlined in Section 5), the land is held for the purpose of:

- Providing green, open space for outdoor recreation and temporary events.
- Providing a symbolic civic space.
- Providing public facilities, furniture and amenities to support the purpose for which the land is held under A34.4.

A34.5 Objectives, Targets and Measures for managing the land

The overarching objectives, targets and measures for the Adelaide Park Lands ([Section 10](#)) apply to Victoria Square / Tarntanyangga.

A34.6 Management proposals

- Support proposals that are consistent with the purpose for which the land is held.

A34.7 Restrictions on public use and movement

- There are no restrictions to access.

ANNEXURE 35 – HINDMARSH SQUARE / MUKATA

A35.1 Identification of the land

Name of park	Certificate of Title Register Book Volume / Folio Number
Hindmarsh Square / Mukata	CR 6102/706 (See the Community Land Register)

A35.2 Park Context

Hindmarsh Square / Mukata, incorporating a sculpture park in the north-west corner, provides opportunities for passive and informal recreation. Being close to Rundle Mall and the central business area, it is also one of the most well-used city squares.

The Square will provide high quality formal garden landscapes and function as vibrant parks responding to their local context and as a relief to the surrounding urban environment.



Figure 37. Map of Hindmarsh Square / Mukata (source: MetroMap Aerial Imagery 2023)

A35.3 Owner / Custodian

- Owner: The Crown in the right of the State
- Custodian: The Corporation of the City of Adelaide

A35.4 Purpose for which the land is held

In addition to the overall purpose for which the Adelaide Park Lands are held (as outlined in Section 5), the land is held for the purpose of:

- Providing for informal recreation, including a sculpture park.
- Providing green, open space for outdoor recreation.
- Providing a venue for temporary events.
- Providing public facilities, furniture and amenities to support the purpose for which the land is held under A35.4.

A35.5 Objectives, Targets and Measures for managing the land

The overarching objectives, targets and measures for the Adelaide Park Lands ([Section 10](#)) apply to Hindmarsh Square / Mukata.

A35.6 Management proposals

- Support proposals that are consistent with the purpose for which the land is held.

A35.7 Restrictions on public use and movement

- There are no restrictions to access.

ANNEXURE 36 – LIGHT SQUARE / WAUWI

A36.1 Identification of the land

Name of park	Certificate of Title Register Book Volume / Folio Number
Light Square / Wauwi	CR 6102/705 (See the Community Land Register)

A36.2 Park Context

Light Square / Wauwi contains features of historical and cultural significance including the State Heritage Listed grave and monument to Colonel William Light, a statue of Catherine Helen Spence and the rainbow colours of the Pride Walk.

The Square will provide high quality formal garden landscapes and function as vibrant parks responding to their local context and as a relief to the surrounding urban environment.



Figure 38. Map of Light Square / Wauwi (source: MetroMap Aerial Imagery 2023)

A36.3 Owner / Custodian

- Owner: The Crown in the right of the State
- Custodian: The Corporation of the City of Adelaide

A36.4 Purpose for which the land is held

In addition to the overall purpose for which the Adelaide Park Lands are held (as outlined in Section 5), the land is held for the purpose of:

- Providing green, open space for outdoor recreation.
- Providing a venue for temporary events.
- Providing public facilities, furniture and amenities to support the purpose for which the land is held under A36.4.

A36.5 Objectives, Targets and Measures for managing the land

The overarching objectives, targets and measures for the Adelaide Park Lands ([Section 10](#)) apply to Light Square / Wauwi.

A36.6 Management proposals

- Support proposals that are consistent with the purpose for which the land is held.

A36.7 Restrictions on public use and movement

- There are no restrictions to access.

ANNEXURE 37 – HURTLE SQUARE / TANGKAIRA

A37.1 Identification of the land

Name of park	Certificate of Title Register Book Volume / Folio Number
Hurtle Square / Tangkaira	CR 6137/492 (See the Community Land Register)

A37.2 Park Context

Hurtle Square / Tangkaira, in the south-eastern corner of the city, features the ‘Forest of Dreams’ artwork which encircles the Halifax / Pulteney Street intersection.

The Square will provide high quality formal garden landscapes and function as vibrant parks responding to their local context and as a relief to the surrounding urban environment.



Figure 39. Map of Hurtle Square / Tangkaira (source: MetroMap Aerial Imagery 2023)

A37.3 Owner / Custodian

- Owner: The Crown in the right of the State
- Custodian: The Corporation of the City of Adelaide

A37.4 Purpose for which the land is held

In addition to the overall purpose for which the Adelaide Park Lands are held (as outlined in Section 5), the land is held for the purpose of:

- Providing green, open space for outdoor recreation.
- Providing a venue for temporary events.
- Providing public facilities, furniture and amenities to support the purpose for which the land is held under A37.4.

A37.5 Objectives, Targets and Measures for managing the land

The overarching objectives, targets and measures for the Adelaide Park Lands ([Section 10](#)) apply to Hurtle Square / Tangkaira.

A37.6 Management proposals

- Support proposals that are consistent with the purpose for which the land is held.
- Providing a venue for temporary events.

A37.7 Restrictions on public use and movement

- There are no restrictions to access.

ANNEXURE 38 – WHITMORE SQUARE / IPARRITYI

A38.1 Identification of the land

Name of park	Certificate of Title Register Book Volume / Folio Number
Whitmore Square / Iparrityi	CR 6102/702 (See the Community Land Register)

A38.2 Park Context

Whitmore Square / Iparrityi features the 'Voyagers' public art commemorating Afghan cameleers of the 1860's, a large Moreton Bay fig tree, a community court and table tennis facilities.

The Square will provide high quality formal garden landscapes and function as vibrant parks responding to their local context and as a relief to the surrounding urban environment.



Figure 40. Map of Whitmore Square / Iparrityi (source: MetroMap Aerial Imagery 2023)

A38.3 Owner / Custodian

- Owner: The Crown in the right of the State
- Custodian: The Corporation of the City of Adelaide

A38.4 Purpose for which the land is held

In addition to the overall purpose for which the Adelaide Park Lands are held (as outlined in Section 5), the land is held for the purpose of:

- Providing for informal recreation, including community courts and table tennis facilities.
- Providing green, open space for outdoor recreation.
- Providing a venue for temporary events.
- Providing public facilities, furniture and amenities to support the purpose for which the land is held under A38.4.

A38.5 Objectives, Targets and Measures for managing the land

The overarching objectives, targets and measures for the Adelaide Park Lands ([Section 10](#)) apply to Whitmore Square / Iparrityi.

A38.6 Management proposals

- Support the implementation of the endorsed [Whitmore Square / Iparrityi Master Plan](#).

A38.7 Restrictions on public use and movement

- There are no restrictions to access.

ANNEXURE 39 – WELLINGTON SQUARE / KUDNARTU

A39.1 Identification of the land

Name of park	Certificate of Title Register Book Volume / Folio Number
Wellington Square / Kudnartu	CR 5779/242 (See the Community Land Register)

A39.3 Park Context

Wellington Square / Kudnartu is the only square located within North Adelaide. Its layout has altered little since it was established, with the same path pattern and style of Victorian tree plantings. The square itself remains intact as intended by Colonel William Light.

The Square will provide high quality formal garden landscapes and function as vibrant parks responding to their local context and as a relief to the surrounding urban environment.



Figure 41. Map of Wellington Square / Kudnartu (source: MetroMap Aerial Imagery 2023)

A39.3 Owner / Custodian

- Owner: The Crown in the right of the State
- Custodian: The Corporation of the City of Adelaide

A39.4 Purpose for which the land is held

In addition to the overall purpose for which the Adelaide Park Lands are held (as outlined in Section 5), the land is held for the purpose of:

- Providing green, open space for outdoor recreation.
- Providing a venue for temporary events.
- Providing public facilities, furniture and amenities to support the purpose for which the land is held under A39.4.

A39.5 Objectives, Targets and Measures for managing the land

The overarching objectives, targets and measures for the Adelaide Park Lands ([Section 10](#)) apply to Wellington Square / Kudnartu.

A39.6 Management proposals

- Support proposals that are consistent with the purpose for which the land is held.
- Providing a venue for temporary events.

A39.7 Restrictions on public use and movement

- There are no restrictions to access.

ANNEXURE 40 – RIVER TORRENS / KARRAWIRRA PARI

The River Torrens / Karrawirra Pari is designated as part of the Adelaide Park Lands and is therefore required to be addressed in a Community Land Management Plan.

A40.1 Identification of the land

Name of park	Certificate of Title Register Book Volume / Folio Number
River Torrens / Karrawirra Pari	CR 6112/473, CR 5807/962, CR 5807/963, CR 5807/964, CR 5807/965, CR 5807/966 (See the Community Land Register)

A40.2 River Context

The River Torrens / Karrawirra Pari (the River) is the home of many water-based activities and State Heritage places that form a key part of the identity of the City of Adelaide. The Torrens Lake is that section of the River between the main weir and the Albert Bridge (Frome Road). Recreational activities on the lake include Popeye, rowing and paddle-boat hire.

The River has ecological values and supports native fish populations, aquatic and aerial mammals (rakali, grey-headed flying-foxes), reptiles (turtles, skinks and snakes) and a wide diversity of birds and insects. It supports native vegetation in the water body itself and along its banks.

The River will continue to meet the wider recreational needs of the community and enhancing and improving the water quality and biodiversity values of the River Torrens / Karrawirra Pari.

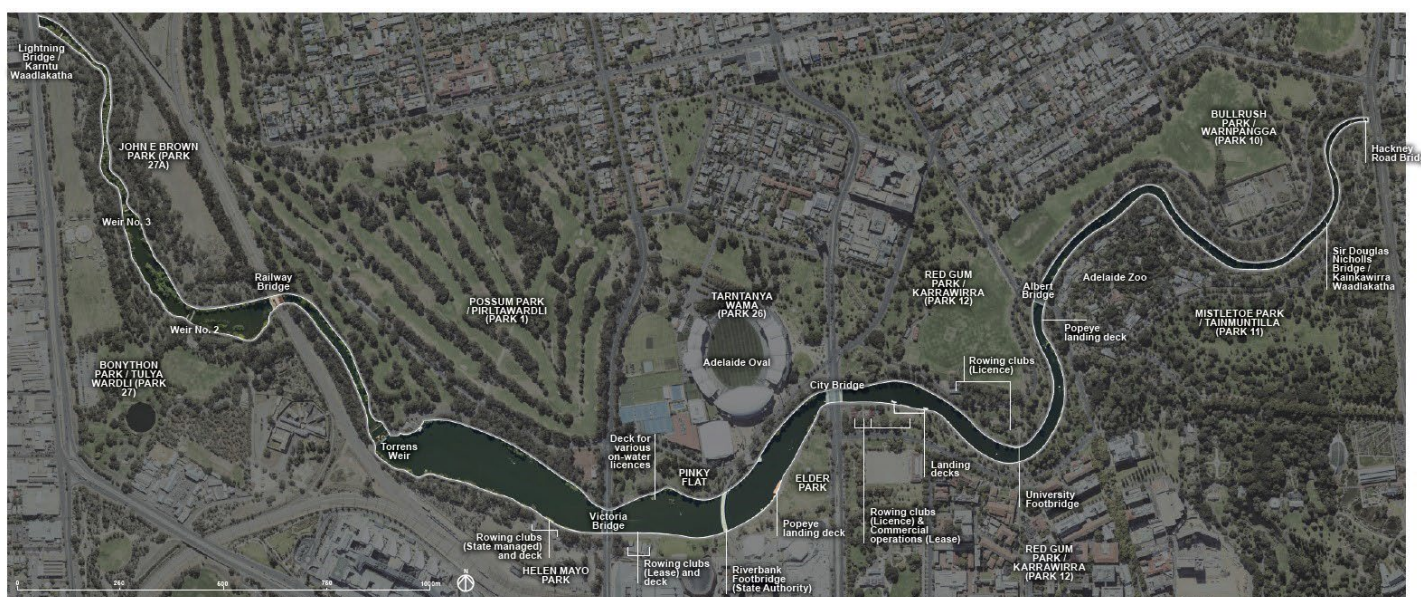


Figure 42. Map of the River Torrens / Karrawirra Pari (source: MetroMap Aerial Imagery 2023)

A40.3 Owner / Custodian

- Owner: The Crown in the right of the State
- Custodian: The Corporation of the City of Adelaide

A40.4 Purpose for which the land is held

In addition to the overall purpose for which the Adelaide Park Lands are held (as outlined in Section 5), the land is held for the purpose of:

- Providing a resource for aquatic-based, boating recreation.
- Providing ecological habitat for native fauna and flora.
- Providing a section of the River Torrens Linear Trail.
- Providing public facilities, furniture and amenities to support the purpose for which the land is held under A40.4.

A40.5 Objectives, Targets and Measures for managing the land

The overarching objectives, targets and measures for the Adelaide Park Lands ([Section 10](#)) apply to the River Torrens / Karrawirra Pari.

A40.6 Management proposals

- Support proposals that are consistent with the purpose for which the land is held.

A40.7 Restrictions on public use and movement

- Swimming in the river is prohibited as per CoA's By-Law for Local Government Land.

APPENDIX A – PRINCIPLES FROM THE ADELAIDE PARK LANDS ACT 2005 (SA)

[*Adelaide Park Lands Act 2005*](#) (SA) establishes the following statutory principles for the operation of the Act and the management of the Adelaide Park Lands.

- a) The land comprising the Adelaide Park Lands should, as far as is reasonably appropriate, correspond to the general intentions of Colonel William Light in establishing the first Plan of Adelaide in 1837.
- b) The Adelaide Park Lands should be held for the public benefit of the people of South Australia and should be generally available to them for their use and enjoyment (recognising that certain uses of the Park Lands may restrict or prevent access to particular parts of the Park Lands).
- c) The Adelaide Park Lands reflect and support a diverse range of environmental, cultural, recreational and social values and activities that should be protected and enhanced.
- d) The Adelaide Park Lands provide a defining feature to the City of Adelaide and contribute to the economic and social well-being of the City in a manner that should be recognised and enhanced.
- e) The contribution that the Adelaide Park Lands make to the natural heritage of the Adelaide Plains should be recognised, and consideration given to the extent to which initiatives involving the Park Lands can improve the biodiversity and sustainability of the Adelaide Plains.
- f) The State Government, State agencies and authorities, and the Adelaide City Council, should actively seek to co-operate and collaborate with each other in order to protect and enhance the Adelaide Park Lands.
- g) The interests of the South Australian community in ensuring the preservation of the Adelaide Park Lands are to be recognised, and activities that may affect the Park Lands should be consistent with maintaining or enhancing the environmental, cultural, recreational and social heritage status of the Park Lands for the benefit of the State.

APPENDIX B – NATIONAL HERITAGE LIST OFFICIAL VALUES

The Adelaide Park Lands and City Layout was inscribed on the National Heritage List on 7 November 2008. Detail on the listing is available here: [Australian Heritage Database](#).

The official values against the six criteria are below. Figure A1 provides a map of the listed place.

Criterion A: Events, Processes

The Adelaide Park Lands and City Layout is the physical expression of the 1837 Adelaide Plan designed and laid out by Colonel William Light. It has endured as a recognisable historical layout for over 170 years retaining the key elements of the plan; encompassing the layout of the two major city areas separated by the Torrens River, the encircling Park Lands, the six town squares, and the grid pattern of major and minor roads. It is substantially intact and reflects Light's design intentions with high integrity.

The Adelaide Park Lands and City Layout is of outstanding importance because it signifies a turning point in the settlement of Australia. It was the first place in Australia to be planned and developed by free settlers, not as a penal settlement or military outpost. The colony of South Australia was established by incorporation as a commercial venture supported by the British Government, based on Edward Wakefield's theory of systematic colonisation. To be commercially successful, there needed to be contained settlement to avoid speculative land sales and this settlement needed to be designed and planned to attract free settlers and to provide them with security of land tenure. The city layout with its grid plan expedited the process of land survey enabling both rapid settlement of land and certainty of title. The wide streets, public squares and generous open spaces provided amenity and the surrounding park lands ensured a defined town boundary while still allowing for public institutional domains. These elements are discernible today.

The Adelaide Park Lands is also significant for the longevity of its protection and conservation. The Adelaide Municipal Corporation Act (1840) established the city council as the 'conservators' of the city and park lands. The establishment of the Park Lands Preservation Society in 1903, along with successive community organisations marks a continuing pattern in community support for safeguarding the significance of the Park Lands for the Adelaide community.

The Adelaide Plan was highly influential as a model for planning other towns in Australia and overseas. It is acknowledged by town planners and historians as a major influence on the Garden City Planning movement, one of the most important urban planning initiatives.

Criterion B: Rarity

The Adelaide Park Lands and City Layout is rare as the most complete example of nineteenth century colonial planning where planning and survey were undertaken prior to settlement. The historical layout as conceived in the 1837 Adelaide Plan remains clearly legible today. The place is also the only Australian capital city to be completely enclosed by park lands and is the most extensive and substantially intact nineteenth century park lands in Australia.

Criterion D: Principal characteristics of a class of places

The Adelaide Park Lands and City Layout is an exemplar of a nineteenth century planned urban centre. It demonstrates the principal characteristics of a nineteenth century city including a defined boundary, streets in a grid pattern, wide streets, public squares, spacious rectangular blocks and expansive public open space for commons and public domains. The expression of these features with their generous open space reflects the early theories and ideas of the Garden City movement of an urban area set in publicly accessible open space with plantings, gardens, designed areas and open bushland.

Criterion F: Creative or technical achievement

Community Land Management Plan

Adelaide Park Lands and City Layout is regarded throughout Australia and the world as a masterwork of urban design. Elements of the Adelaide Plan that contribute to the design excellence are the use of the encircling park lands to define the boundary of the development of the city and to provide for health, public access, sport, recreation and public institutional domains, thereby meeting both economic and social requirements. Designing the city layout to respond to the topography was highly innovative for its time with the northern sections of the city located and angled to take advantage of the rising ground while retaining the Torrens River as a feature within the Park Lands. The judicious siting and wide streets maximised views and vistas through the city and Park Lands and from some locations to the Adelaide Hills. The plan features a hierarchy of road widths with a wide dimension to principal routes and terraces and alternating narrow and wide streets in the east-west direction. Light's planning innovation is supported by substantial historical documentation.

The formal organisation, delineation and dedication of the Park Lands space was a pioneering technical achievement of William Light in the Adelaide Plan.

The overall landscape planting design implemented by several successive landscape designers/managers incorporated designed vistas, formal avenues, plantations, gardens, use of specimen trees, botanically important living plant collections particularly at the Adelaide Botanic Garden and the strategic placement of buildings and statuary in their settings.

The creativity of the city and parkland design is clearly legible in the contemporary landscape viewed from the air or from the Adelaide Hills. The civic design of Adelaide was used as a model for founding many other towns in Australia and New Zealand and it is cited in later seminal Garden City planning texts including *Garden Cities of Tomorrow* by Ebenezer Howard.

Criterion G: Social Value

The Adelaide Park Lands has outstanding social value to South Australians who see it as fundamental to the character and ambience of the city. The Park Lands with their recreation areas, sports grounds, gardens and public facilities provide venues for individual and group activities and events, meetings and passive and active recreation. The Park Lands also have significant social value due to the range of important civic, public, and cultural assets and institutions within it.

The present Adelaide Parklands Preservation Society is the latest in a long history of community groups dedicated to protecting the Adelaide Park Lands. These have included the Park Lands Defence Association (1869-87), the Park Lands Preservation League (1903, 1948) and the National Trust of South Australia. The longevity of the involvement of community groups in campaigning for the protection and safeguarding of the Park Lands is exceptional.

Criterion H: Significant People

Colonel William Light is most famously associated with the plan of Adelaide. He bore the ultimate responsibility, as recorded in his surviving publications and letters.

APPENDIX C – LIKELIHOOD OF IMPACT OF WORKS ON THE NATIONAL HERITAGE VALUES

The following are examples of actions that should be self-assessed in terms of their impacts on the National Heritage values of the Park Lands, and that may require referral²:

- Significant infrastructure, such as rail, tram, helipad
- Change of land use and associated landscape character
- Major road alignment or widening and new roads, including elevated roads
- Permanent road closures.
- New buildings and additions to existing buildings (greater than 30m²)
- New bridges or footbridges
- Car parks
- Any new development within the squares, including buildings, structures, fences and plazas
- Extensive landscaping, including additional hard surfaces, or new or enlarged areas of biodiversity management
- Utilities infrastructure, including above ground pipelines and telephone towers
- Any development described in an approved master plan
- Public artworks, monuments, statues and plaques
- Land division
- Temporary structures for events
- Major changes to the River Torrens basin or other major riparian works
- Any encroachment in the street grid
- Solid fencing
- Large loss of open green space
- Land use adjacent to the Park Lands that may impact on views and vistas (e.g. building height limits).

² List provided in: 'Adelaide Park Lands and City Layout: Issues and Opportunities Analysis for the National Heritage Listing' by dash architects (December 2018, page 35)

Community Land Management Plan

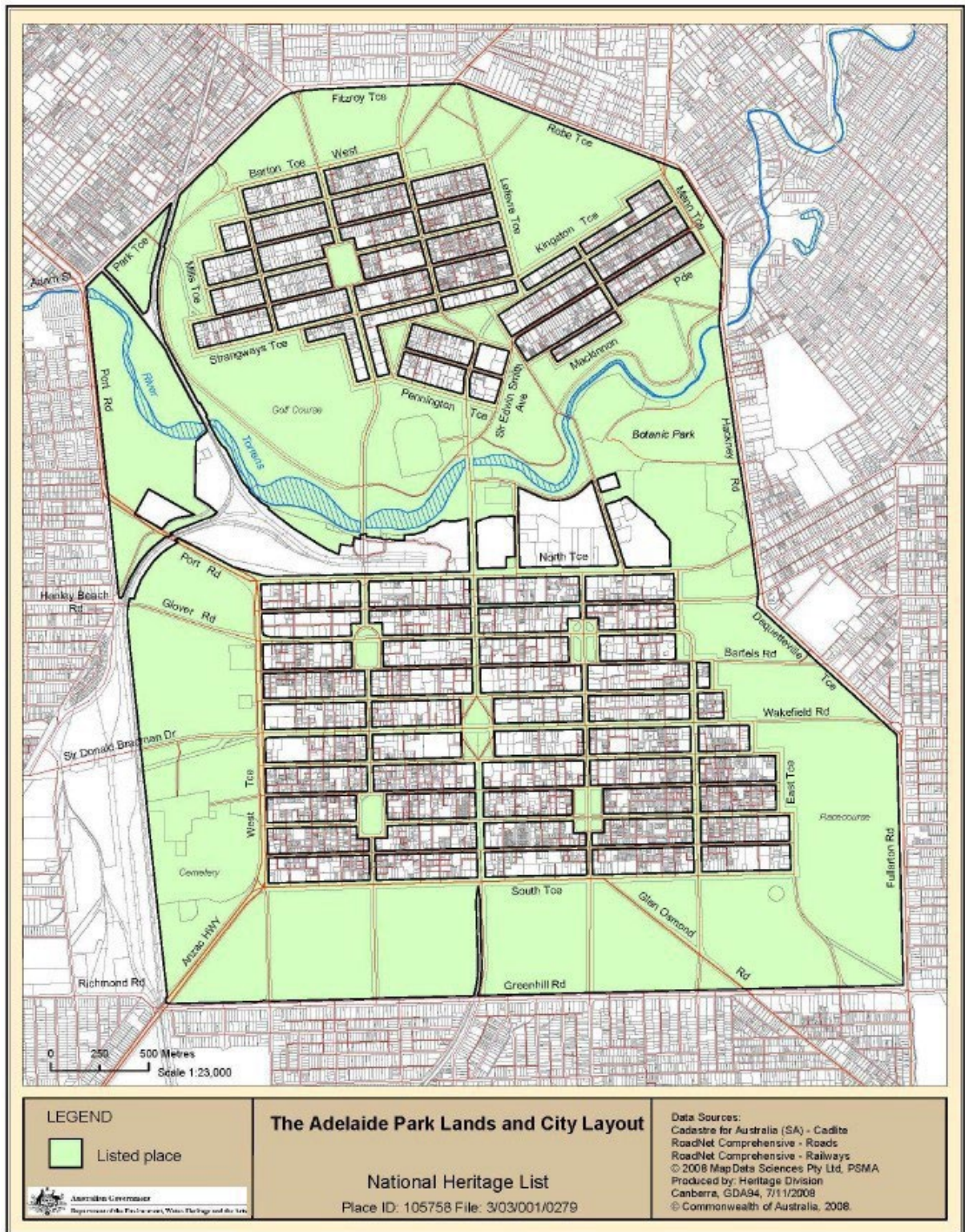


Figure A1

National Heritage Listing boundary (prepared by the Department of Environment and Water 2018)