

# QUENTIN KENIHAN

## INCLUSIVE PLAYSPACE

### DESIGN REPORT



# QUENTIN KENIHAN PLAYSPACE

## PROJECT OBJECTIVES

The Quentin Kenihan Inclusive Playspace aims to reflect and embed the following objectives throughout the planning, design and delivery of the project.

The Quentin Kenihan Inclusive Playspace will;

- Be an inclusive playspace that meets the needs of all users.
- Reflect Quentin's personality as someone funny, forceful and for a champion for the bragging rights of SA.
- Recognise that 'Not everyone can play on everything, but there is something for everyone' - Touched by Olivia Foundation playspace design principle
- Create a space where ability and challenge are design narratives that people can experience and explore.
- Create a desire to come back again, again and again, ensuring that the playspace reveals more with every visit.
- Create play experiences and design outcomes that excite all the senses
- Encourage all users to be IN-Q-SIVE
- Reflect the Adelaide context of the 'Hills and Plains'.
- Deliver a narrative that reflects the cultural overlays of the site, whether Kaurna, colonial or contemporary.

## PROJECT GUIDELINES

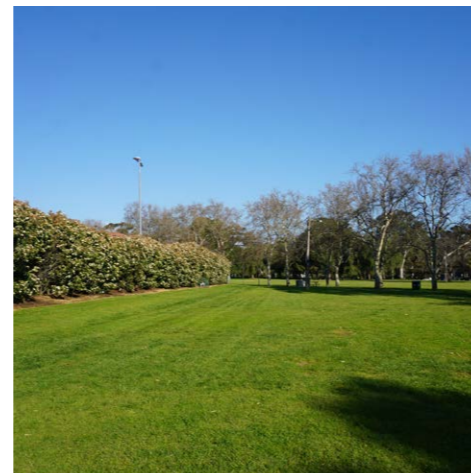
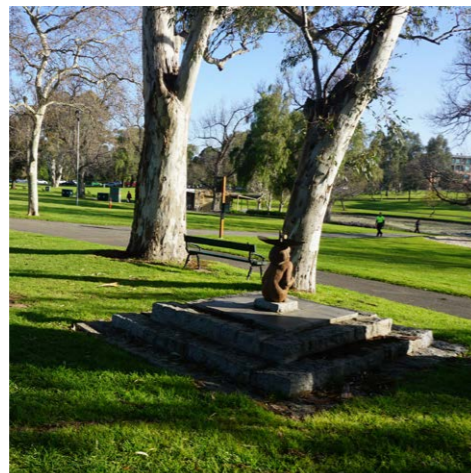
'Touched by Olivia Foundation (TBOF) Inclusive Playspace Guidelines' have been adopted for the Quentin Kenihan Inclusive Playspace. The following TBOF design principles have guided the planning and design of the playspace;

1. Everyone can play
2. Access to Nature
3. Total Experience
4. A connection to the community
5. Play Independence – I can do it myself!
6. Friendship – Social participation

## PROJECT CONSIDERATIONS

The concept plan requires consideration of the following;

- Maximise play value
- Create a playspace that is different from other play offerings across the rest of the City of Adelaide
- Provide suitable cultural representations
- Develop a flow across the playspace of play, access, experience and challenge
- Create a design that expresses the letter Q (for Quentin in plan view, shape, design abstraction)
- Consider Exeloo with Changing Places to be considered as part of the concept (based on the Jupiter 43 Triple Aus And 41 Single Boundless toilet - 33 -35m2 footprint compared to current toilet area of 100m2)
- Develop a bus drop off near the Bowling club or on-street drop-off for private buses (see Overall Concept Plan)
- Ensure that event overlays are accommodated (A3DE and Gluttony and maintain access to the playspace accessible during events)
- Provide accessible path connections to Quentin Kenihan Inclusive Playspace
- Retention of three [3] accessible car parking spaces in the Rymill car park (see Overall Concept Plan)
- Consider accessible car parking on Bartels Road (see Overall Concept Plan)



# QUENTIN KENIHAN PLAYSPACE

## PLAYSPACE DESIGN

### 1. PLAY FEATURES

- Provide play experiences that are fun and challenge – balance safety and challenge
- Provide play for all ages and abilities (consideration for variations in abilities and differing cognitive requirements)
- Provide water play (sensory benefit)
- Include proprietary, bespoke and nature play elements to create a blend of play ideas
- Re-use of existing equipment where appropriate
- Provide an accessible pump track
- Integrate opportunities for public art and incorporate cultural or commemorative elements (link in with Council's RAP and potential funding opportunities)

### 2. ACCESS AND PATHS

- Consider access between bowling club and playspace (future works)
- Design areas for wheeled activities, loops paths and limit the impact of topography on paths
- Access paths are 2m wide and the accessible path to Challenge Canyon (future works) is 1.6m wide
- All paths are wide enough for two people to walk side-by-side
- Provide access paths to play equipment to allow access and transfer points for children and carers
- Limit the impact of pit covers or grates on access paths
- Limit the impact of drop gum nuts or berries that may cause slipping hazards

### 3. BOUNDARIES, ENTRANCES AND GATES

- Provide tubular fencing to the playspace perimeter (1.2m) with landscape treatments to either side
- Redevelop hedging to bowling club to increase visual connections
- Provide self-closing pool fence locks to all entrance gates [3] (acknowledge the impact of gates on accessibility - risk versus reward)
- Provide entry points and a sense of arrival to the north, south and west
- Capitalise on existing connections other facilities (kiosk, toilet and barbecue areas)

### 4. SHADE AND SHELTER

- Provide shelter to northern seating and barbecue areas (5x5m)
- Significant shade provide by existing trees - capitalise on shade provision)
- Visual impact of shelter structures is to be limited

### 5. LANDSCAPE AND OPEN SPACE

- Provide space for large groups
- Plant selection to take account of GAP Water (increased salinity)
- Retain existing trees and were possible to locate footing, pathways and fall zone areas outside TPZ and SRZ areas to avoid damaging impacts on existing trees
- Capitalise on slope profile (east-west) to assist with site drainage
- Mounding is used to retain spoil and topsoil on-site

### 6. SUPPORT INFRASTRUCTURE

- The playspace provides a hub for socialisation that encourages people to stay and play with seating and congregation areas
- Chairs, benches, bins are to be located on bases with paths for access
- Provide seating that caters for all needs with armrests and space for wheelchair access
- Reuse of stonewalling to existing toilets (under review)

### 7. SERVICES AND INFRASTRUCTURE

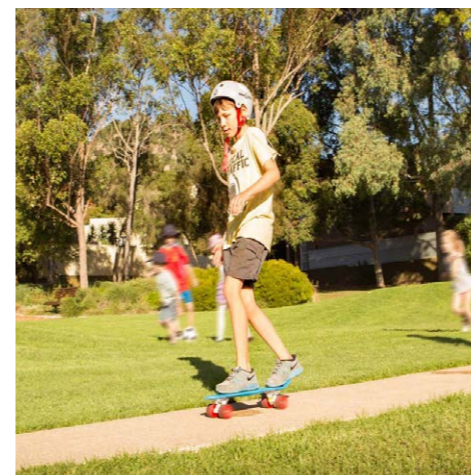
- Integrate infrastructure improvements for events including power, sewer and water (review against future event planning for Rymill Park)
- Provide lighting to functional P3 levels
- Water supply to the playspace and drinking fountain is to be extended from the existing drinking fountain using a 25mm connection.
- Irrigation take-off point to capitalise on recycled water main
- Retain existing cables feeds
- Electrical reticulation to future lighting, barbecues and power points has been minimised
- Demolition of existing toilet block will be required and reconnection of services to proposed toilet

### 8. SIGNAGE

- Develop intuitive and simple navigate across the QKIP with wayfinding signage at decision points (future works)
- Use signage to dogs keep out apart from assistance dogs
- Consider 'depth perception' changes – safety for visually impaired regarding level changes

### 9. MAINTENANCE AND MANAGEMENT

- Maintenance access, particular access to large equipment and enclosed barring cases (repair and replacement) provided to the western boundary
- Ensure irrigation lines are buried to avoid tripping hazards in planting areas.
- Develop robust design outcomes that provide longevity and avoid rapid deterioration.



OVERALL SITE CONCEPT PLAN



- ① EXISTING ACCESSIBLE PATH TO NORTHERN ENTRANCE
- ② ACCESSIBLE TOILETS WITH ADULT CHANGING FACILITY (LOCATED WITHIN PLAYSPACE BOUNDARY FENCE)
- ③ EXISTING ACCESSIBLE PARKING BAYS (3)
- ④ UPGRADED PATH ACCESS WITH LINK TO SOUTH EASTERN ENTRANCE
- ⑤ EXISTING PLAYSPACE REMOVED AND EQUIPMENT REUSED
- ⑥ EXISTING SAND PIT REMOVED AND LAWN REINSTATED
- ⑦ ACCESS PATH LINKING PLAYSPACE AND PASSENGER DROP-OFF
- ⑧ POTENTIAL PASSENGER DROP-OFF ON BARTELS ROAD (LONGER TERM)
- ACCESSIBLE PATH WAYS

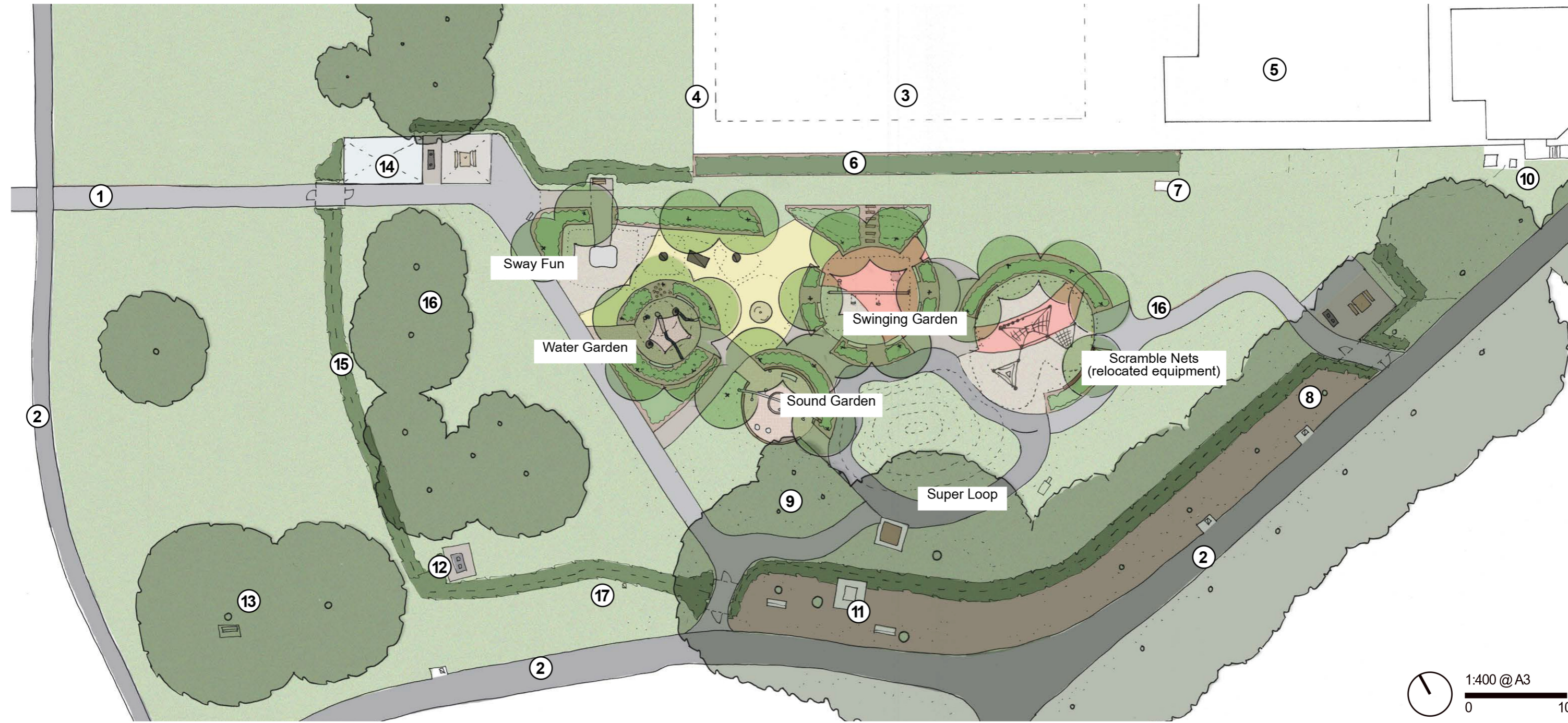


# QUENTIN KENIHAN PLAYSPACE

## CONCEPT PLAN

### KEY

- 1. NEW ACCESS PATH
- 2. EXISTING PATHWAYS
- 3. BOWLING CLUB GREEN
- 4. EXISTING FENCE TO BOWLING CLUB
- 5. BOWLING CLUBROOMS
- 6. EXISTING EVERGREEN HEDGE
- 7. EXISTING RISER MAINS
- 8. EXISTING PLANE TREE AVENUE (MULCH BELOW)
- 9. EXISTING EUCALYPTUS
- 10. EXISTING TRANSFORMER
- 11. EXISTING SCULPTURE
- 12. EXISTING BARBECUE
- 13. EXISTING BENCH SEAT
- 14. NEW ACCESSIBLE TOILET
- 15. NEW FLAT TOP TUBULAR FENCING WITH GARDEN BED (1.2M)
- 16. EXISTING STOBIE POLES



# QUENTIN KENIHAN PLAYSPACE

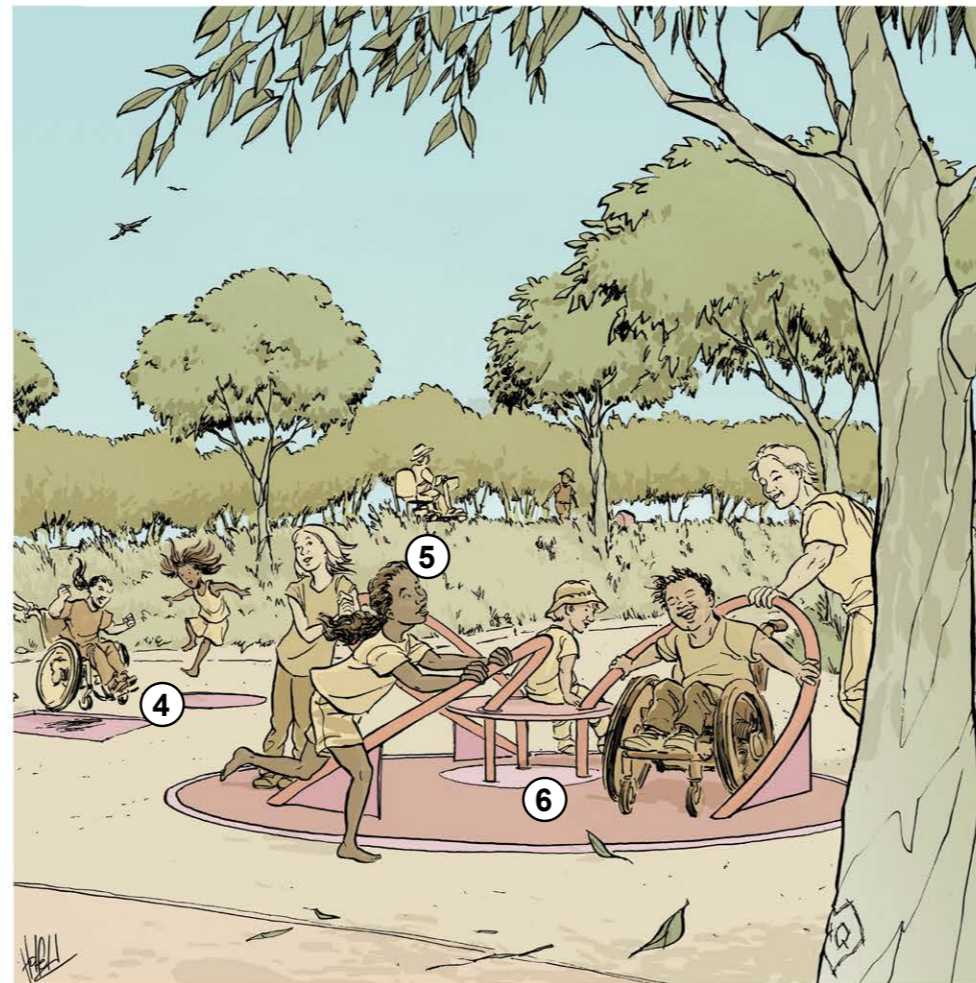
## ARTIST'S IMPRESSION

## KEY

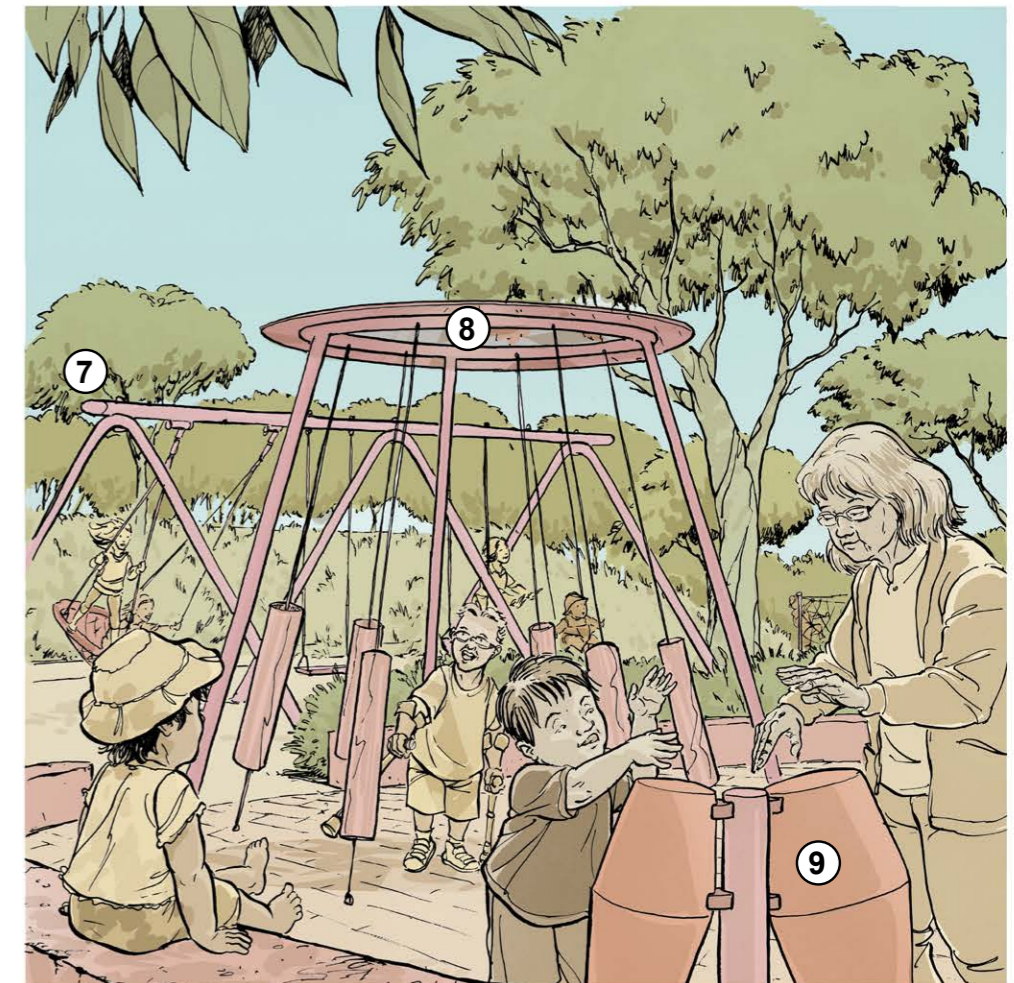
1. WATER SPOUT AND WATER RILL
2. ACCESSIBLE TROUGH
3. WATER PUMP
4. IN-GROUND 1.5M DIA & WHEELCHAIR TRAMPOLINES
5. NATURE PLAY EMBANKMENT SCRAMBLE
6. ALL ABILITIES CAROUSEL
7. SWING GALLERY (BUCKET, STRAP, RIGID SEAT & RECYCLED BASKET SWING)
8. CHIME TOWER WITH COLOUR PERSPEX RIM
9. PERCUSSION DRUMS



WATER GARDEN



CAROUSEL AND TRAMPOLINES



SOUND GARDEN AND CHALLENGE CANYON

# QUENTIN KENIHAN PLAYSPACE

CONCEPT PLAN NORTHERN SITE



## KEY

1. WET PLAY WITH WATER SQUIRTS, SPRAYS, SPOUT & TROUGH
2. COBBLED SURFACE WITH WATER RILLS
3. SEATING WALLS WITH SWALE GARDEN BED
4. SWAY FUN
5. ACCESS LANDING TO SWAY FUN
6. IN-GROUND 1.5M DIA & WHEELCHAIR TRAMPOLINES
7. ACCESSIBLE DRINKING FOUNTAIN
8. SLOPED GARDEN BED WITH SENSORY PLANTING
9. ALL ABILITIES CAROUSEL
10. SOUND GARDEN WITH CHIMES, DRUMS & TALKING TUBES
11. OVERHEAD MUSICAL ROPES
12. LAWN MOUND
13. SEATING WALLS
14. SWING GALLERY (BUCKET, STRAP, RIGID SEAT & RECYCLED BASKET SWING)
15. CAREY GULLY (RECYCLED) STONE SEATING WALLS
16. MASS PLANTING TO SURROUNDING GARDEN BEDS
17. BITUMEN TRIKE TRACK
18. 2.0M MAIN ACCESS PATHWAY
19. LARGE LAWN AREA (INSIDE FENCE)
20. EXISTING PICNIC BENCHES
21. SHELTER, PICNIC BENCH & ACCESSIBLE BARBECUE

## SURFACES

	Turf mounds		Bitumen track & line marking
	Amenity lawn		Exposed aggregate concrete
	Rubber softfall		Stone cobble
	Softfall mulch		Existing bitumen
	Brick paving		Garden beds
	Existing hedge		Existing trees
	New trees		

# QUENTIN KENIHAN PLAYSPACE

## MOOD BOARD CENTRAL SITE



01



02



03



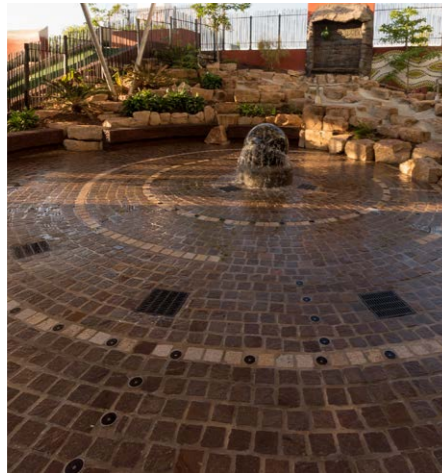
04



05



06



07



08



09



10



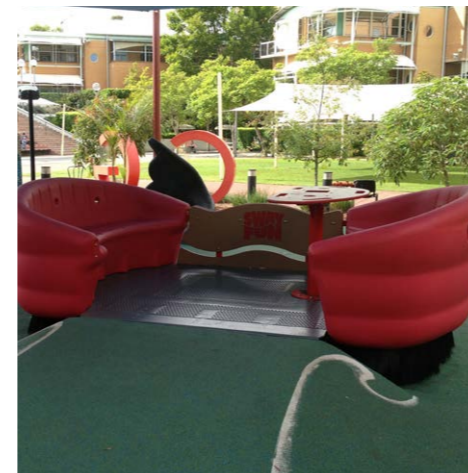
11



12



13



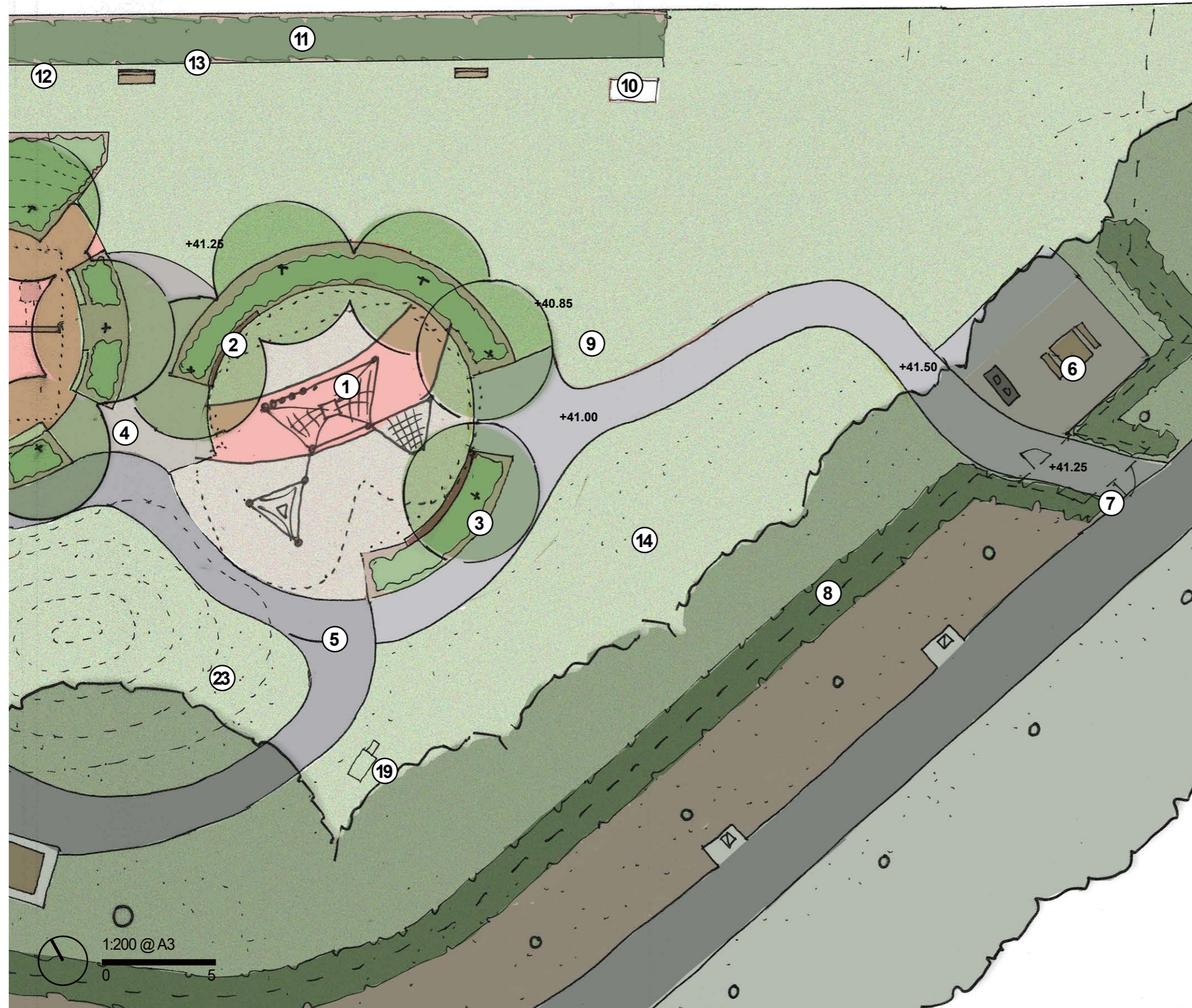
14

1. *Overhead music chimes*
2. *Cajun drums*
3. *Xylophone*
4. *Talking tubes*
5. *Water squirts & spray*
6. *Cobbled water surface & water weir*
7. *Cobbled water rill*
8. *Water pump & trough*
9. *Four bay swing with harness*
10. *Wheel chair trampoline*
11. *Seating wall*
12. *In ground trampolines*
13. *All accessible carousel*
14. *Sway fun*



# QUENTIN KENIHAN PLAYSPACE

## CONCEPT PLAN SOUTHERN SITE



### KEY

1. SCRAMBLE NETS RELOCATED FROM EXISTING PLAYGROUND
2. BRICK SEATING WALLS
3. MASS PLANTED SURROUND GARDEN WITH SHADE TREES
4. EXPOSED AGG. CONCRETE ACCESS PATH
5. BITUMEN TRIKE TRACK WITH BUMP MOUNDS
6. BBQ AND PICNIC SETTING
7. GATED SELF CLOSING ACCESS AIRLOCK TO PLAYSPACE
8. FLAT TOP TUBULAR FENCING WITH GARDEN BED (1.2M)
9. EXISTING STOBIE POLE
10. EXISTING RISER MAIN
11. SCREENING HEDGE
12. SENSORY PLANTING
13. RETAINING WALL
14. MOUNDED LAWNS

### SURFACES

	Turf mounds		Bitumen track & line marking
	Amenity lawn		Exposed aggregate concrete
	Rubber softfall		Existing bitumen
	Softfall mulch		Garden beds
	Existing hedge		Existing trees
	New trees		Mulched area

# QUENTIN KENIHAN PLAYSPACE

## MOOD BOARD SOUTHERN SITE



01



02



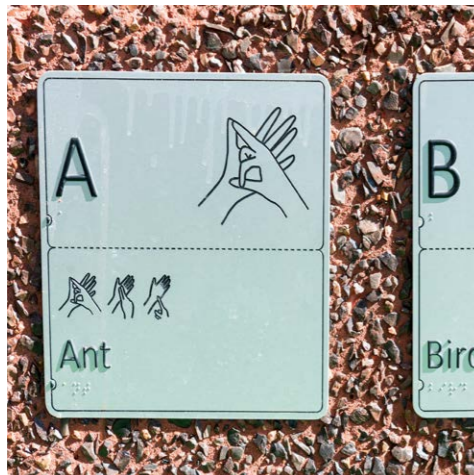
03



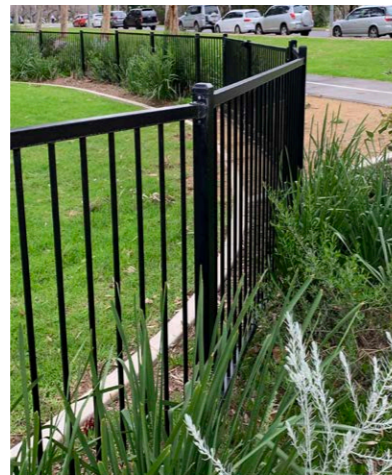
04



05



06



07



08



09








10

1. Existing scramble net
2. Rocks steps & mound planting
3. Carey Gully stone retaining & seating walls
4. Trike track (Adelaide Superloop)
5. Small scale artworks
6. Ch at boards
7. Flat top tubular fencing with garden bed (1.2m)
8. Accessible toilet with Changing Places cubicle (future works)
9. Brick seating wall
10. Accessible barbecue

# QUENTIN KENIHAN PLAYSPACE

## INCLUSIVITY REVIEW

-  WHEELCHAIR ACCESSIBLE PLAY EQUIPMENT
-  PLAY EQUIPMENT REQUIRING WHEELCHAIR TRANSFER
-  NO WHEELCHAIR ACCESS
-  WHEELCHAIR COMPLIANT PATHWAY
-  WHEELCHAIR ACCESSIBLE (NON COMPLIANT)

