

Clean Recycling

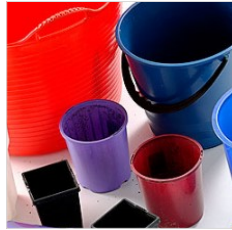
What goes in the Yellow Lid Wheelie Bin?
PLEASE RINSE IF NEEDED & REMOVE ALL LIDS/NOZZLES



Plastic water bottles (no lids)



Plastic milk/ juice bottles



Buckets, plant pots



Ice cream, yoghurt tubs



Marg, butter, sauce, dressing containers



Take-away containers



Cleaning product bottles



Aluminium drink cans



Aluminium food cans



Aluminium foil



Hairspray, insect spray, Aerosols



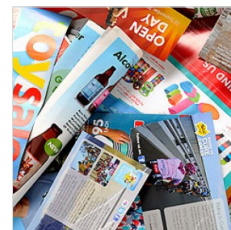
Steel food cans



Glass bottles (no lids)



Wine & Alcohol bottles (no lids)



Glossy magazines, wrapping paper,



Milk cartons



Cardboard, egg cartons



Newspapers



Pizza boxes



Glass jars



Garden/grass clippings



Cling wrap, soft plastics, bubble wrap



Garbage bags



Broken/unbroken glasses & crockery



Food scraps