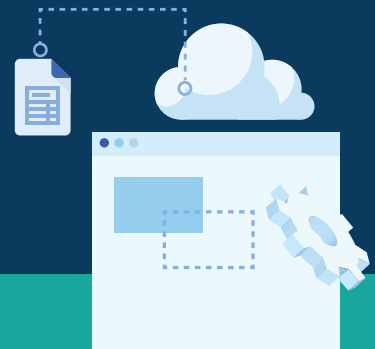


QUALITY STANDARDS FRAMEWORK

ELEMENTS AGAINST EACH DOMAIN



SAFE AND WELCOMING ENVIRONMENT

ELEMENTS

- A.1 The physical learning environment is safe, culturally responsive and accessible.
- A.2 The program empowers students to participate in decision making.
- A.3 The program is grounded in trauma-informed practice and positive behaviour support.



STRONG FOUNDATIONS

ELEMENTS

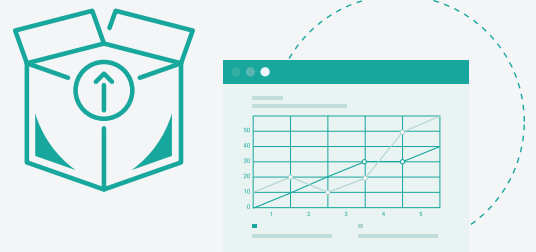
- B.1 The program's purpose and target cohort are well defined and communicated.
- B.2 Activities are informed by evidence of what works in engaging students in learning.
- B.3 The program has sound policies, procedures and governance processes that involve students, families and community.



HIGH QUALITY LEARNING CONTENT

ELEMENTS

- C.1 Teaching and learning content is aligned with the Australian Curriculum and/or NTCET, and resources embed evidence-based pedagogies, are culturally responsive and include instructional supports for teachers.
- C.2 Each student has an individual learning plan aligned with the Australian Curriculum and/or NTCET that guides access to learning content.



FUTURE FOCUS

ELEMENTS

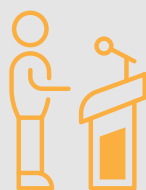
- D.1 Teachers and other program staff have and communicate high expectations of all students.
- D.2 The program has clearly defined pathways to and/or coordination with mainstream schools, higher education, the workforce or further training opportunities.
- D.3 The program equips students with practical skills and tools for life.



HOLISTIC APPROACH TO LEARNING

ELEMENTS

- E.1 The program establishes a foundation of social and emotional wellbeing.
- E.2 The program supports students to form positive and respectful relationships with their peers, mentors and role models.



LEADERSHIP AND STAFF

ELEMENTS

- F.1 Leaders and the staff cohort reflect the student cohort including local, Aboriginal and Torres Strait Islander, and culturally diverse staff.
- F.2 Leaders and staff are able to build trusted relationships with students and are qualified, motivated and supported to work with the program's target cohort.



COLLABORATION AND SUPPORT

ELEMENTS

- G.1 Programs share insights, information, expertise and resources and can learn from experience.
- G.2 Programs have access to and are able to navigate a range of support services that meet the needs of students.
- G.3 Flexible education options and pathways are well documented, communicated to the local community and easy to navigate.
- G.4 Programs consistently report on student progress and outcomes through endorsed department systems.

