

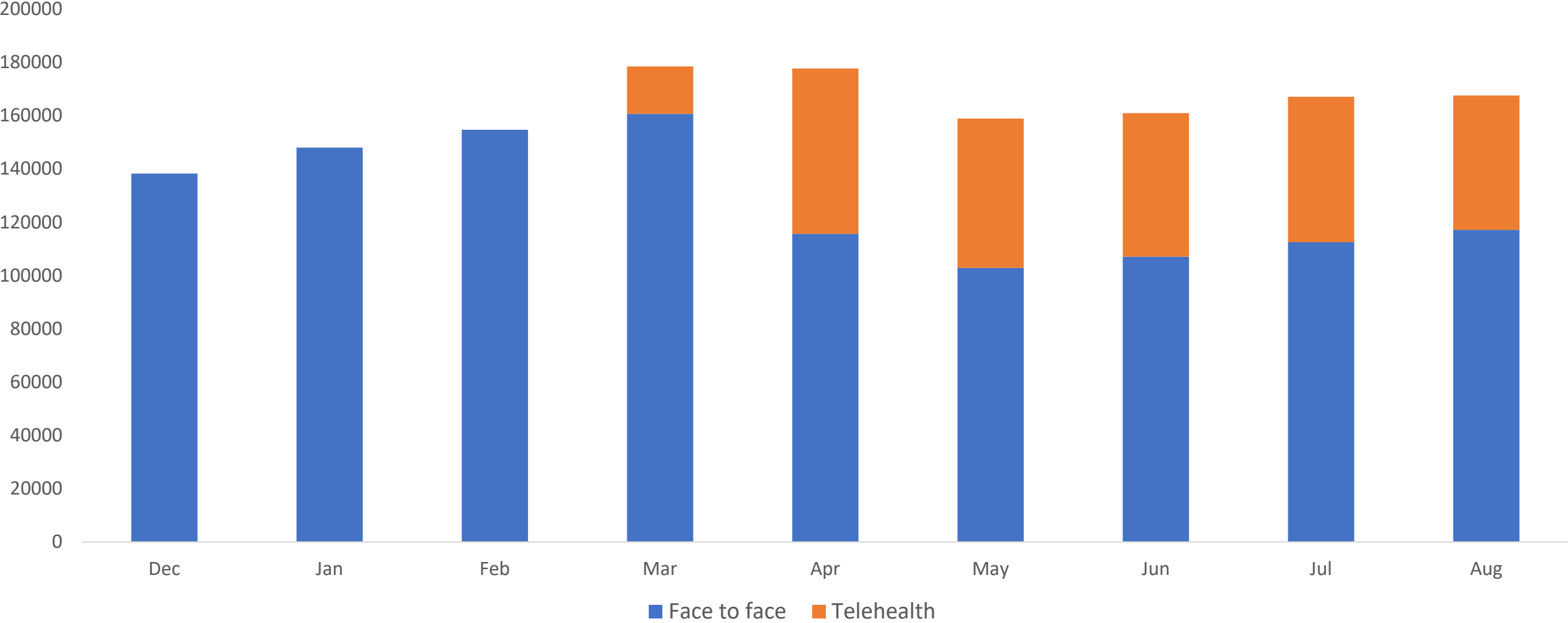


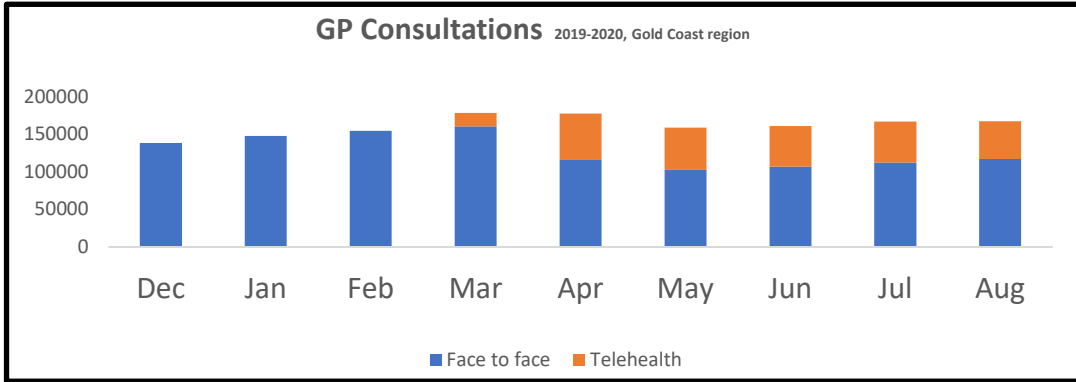
Cervical Cancer screening in the Gold Coast

Associate Professor Carl de Wet

GP Consultations

2019-2020, Gold Coast region, n=±80 practices





Telehealth

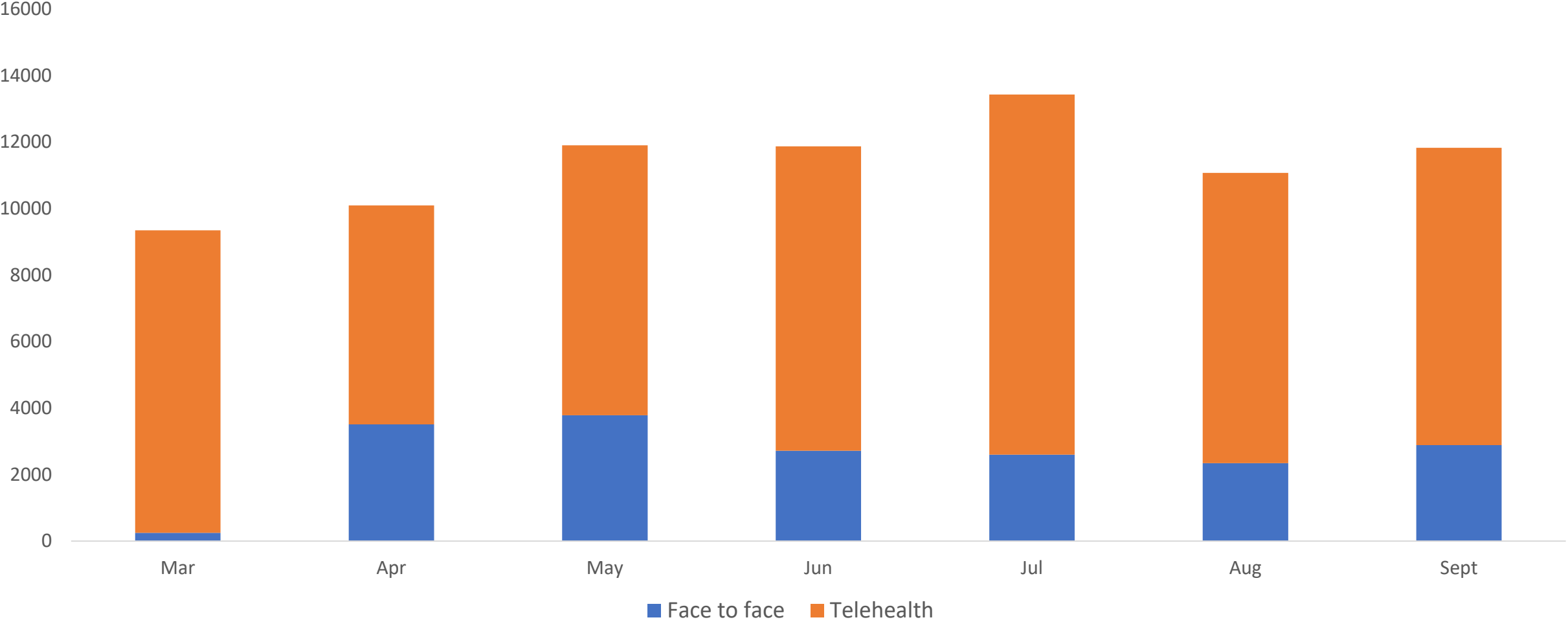
±33% of all consultations

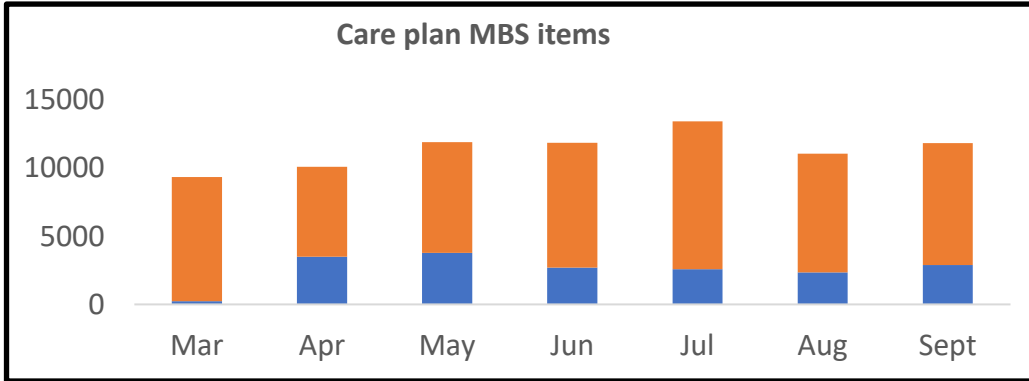
>50,000 patients per month

IMPLICATION: Fewer opportunities for cervical cancer screening

Care plan MBS items

2020, Gold Coast region, n=±80 practices





Care plan MBS items

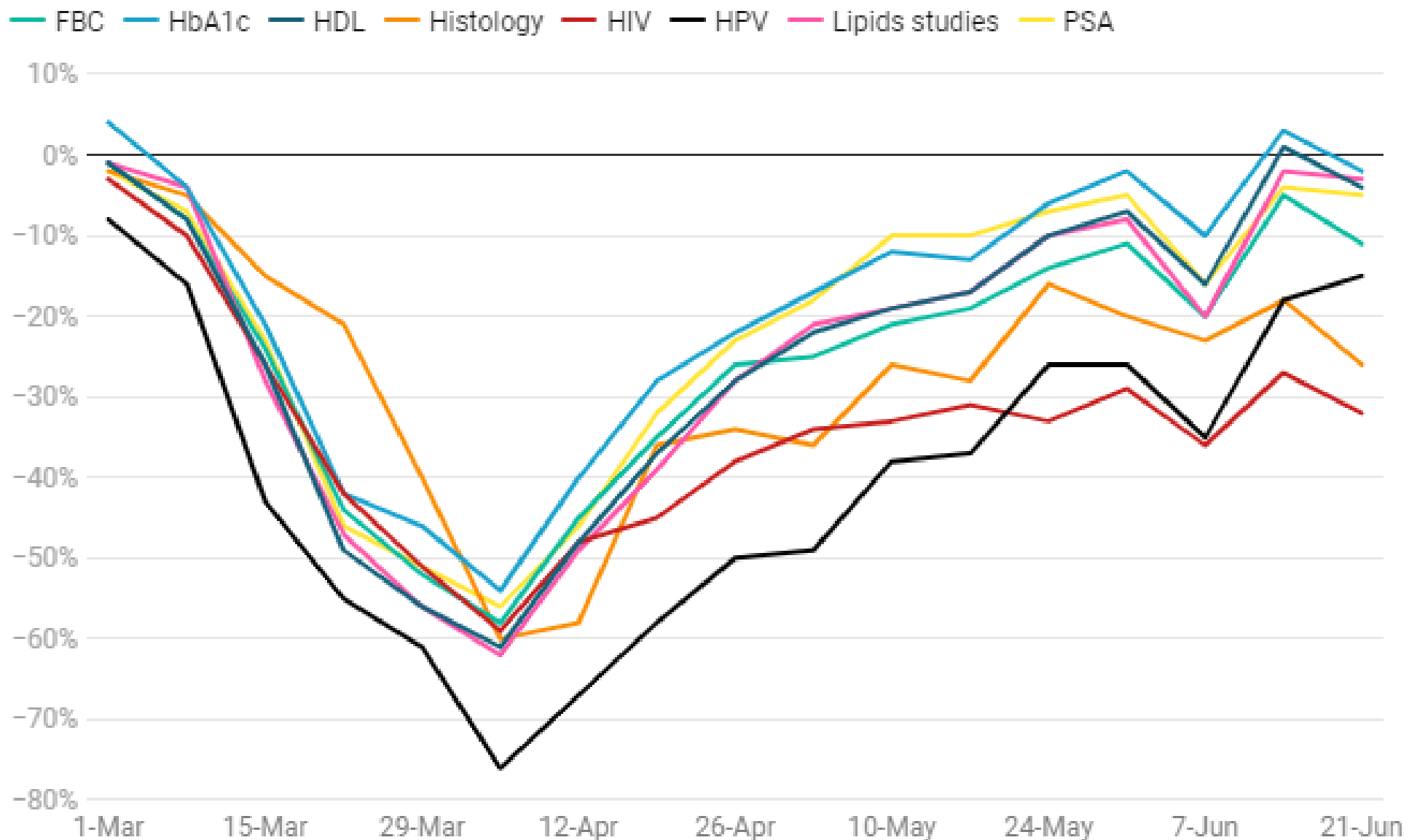
>10,000 per month

±80% by telehealth

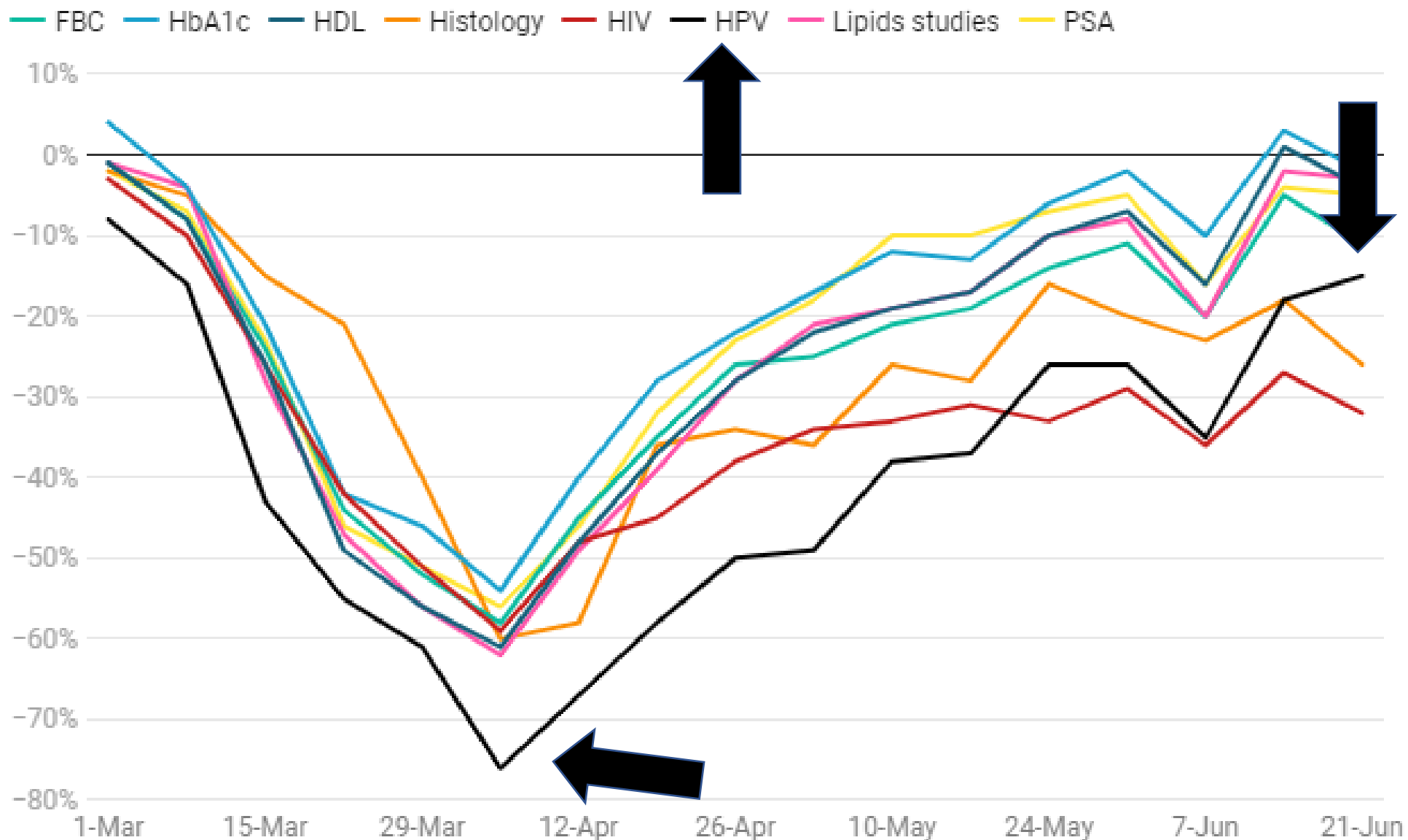
5-8% of all consultations

IMPLICATION: Fewer opportunities for cervical cancer screening

Falls in pathology tests vs February weekly average (NSW)



Falls in pathology tests vs February weekly average (NSW)



The impact of COVID-19 on cancer screening



Australian Government
Cancer Australia

Review of the impact of COVID-19
on medical services and procedures
in Australia utilising MBS data:
Skin, breast and colorectal cancers,
and telehealth services

September 2020



Review of the impact of COVID-19
on medical services and procedures
in Australia utilising MBS data:
Skin, breast and colorectal cancers,
and telehealth services

September 2020

> 36% fewer colonoscopies in
May-June 2020

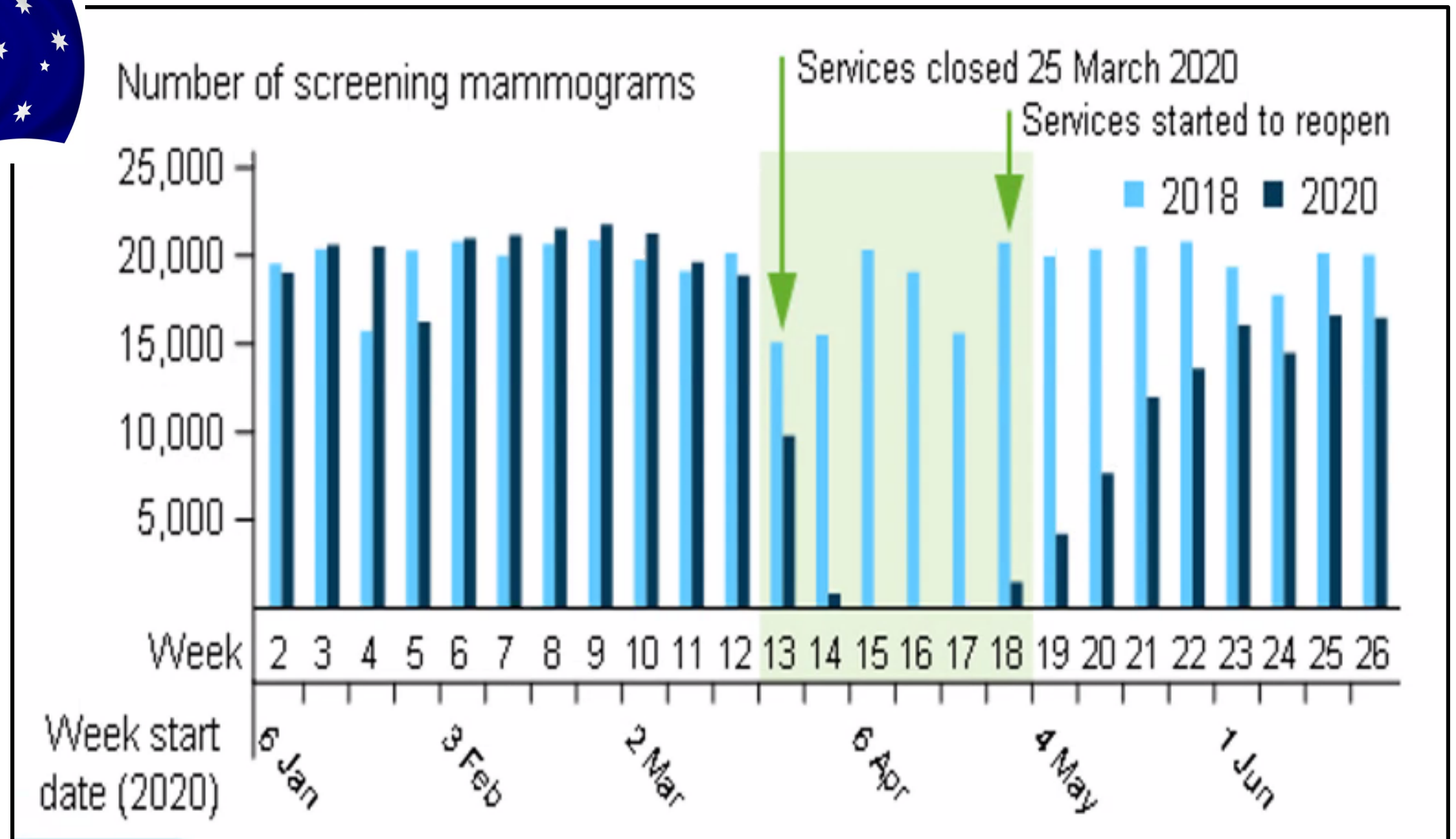


> 37% less imaging for
suspected breast cancer in
March-April 2020



> 25% fewer excisions for
melanoma May-June 2020

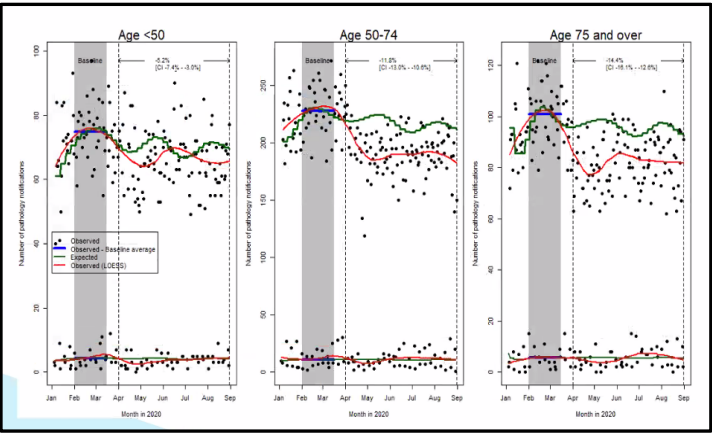




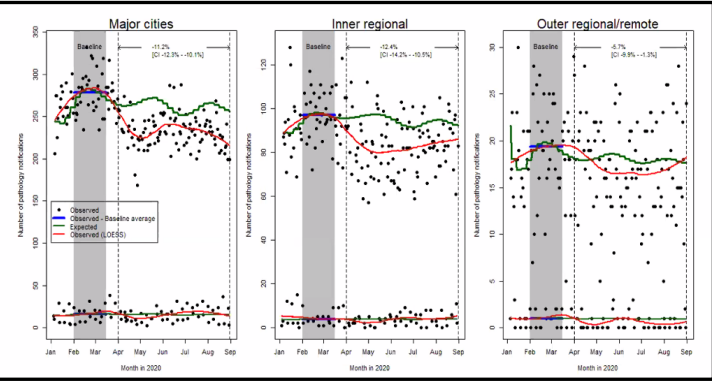
145,000 fewer women were screened for breast cancer in the first half of 2020 vs 2018

Decline in cancer screening – worst affected:

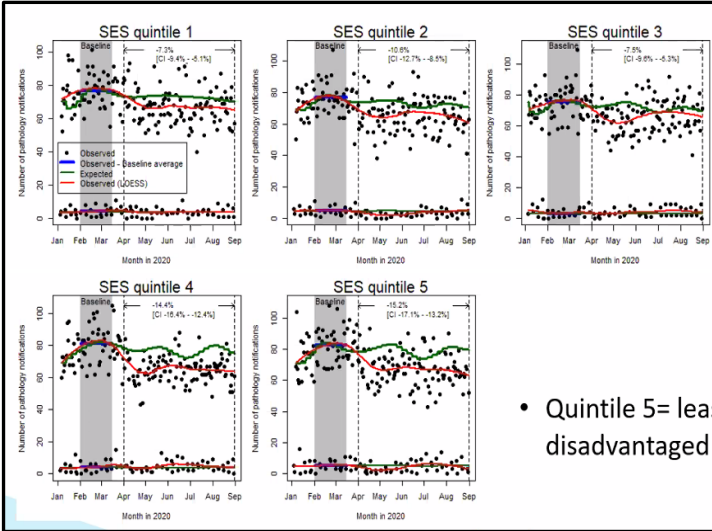
Women in their fifties



Women living in cities



Women in higher socio-economic groups



- Quintile 5= least disadvantaged



Estimated number of new cases of cervical cancer diagnosed in 2020

 **933 females**



Estimated % of all new female cancer cases diagnosed in 2020

1.4%



Estimated number of deaths from cervical cancer in 2020

 **238 females**



Estimated % of all female deaths from cancer in 2020

1.1%



Chance of surviving at least 5 years (2012–2016)

74%



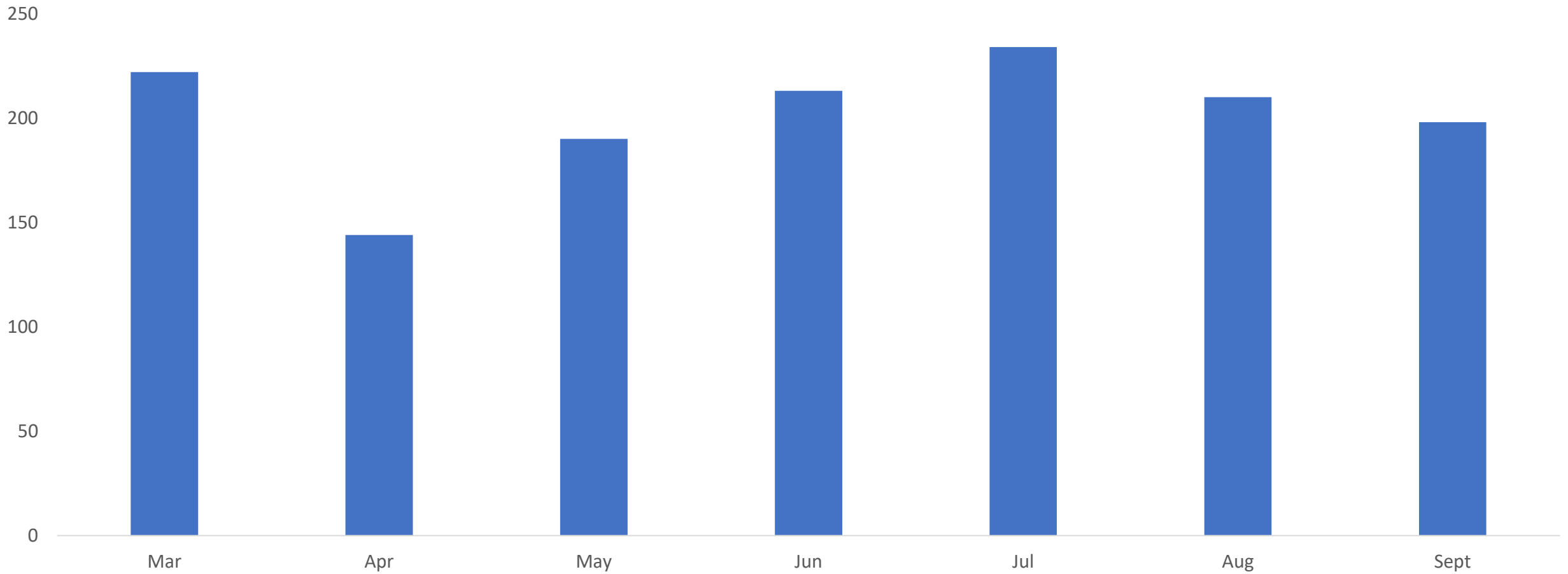
Females living with cervical cancer at the end of 2015 (diagnosed in the 5 year period 2011 to 2015)

3,368

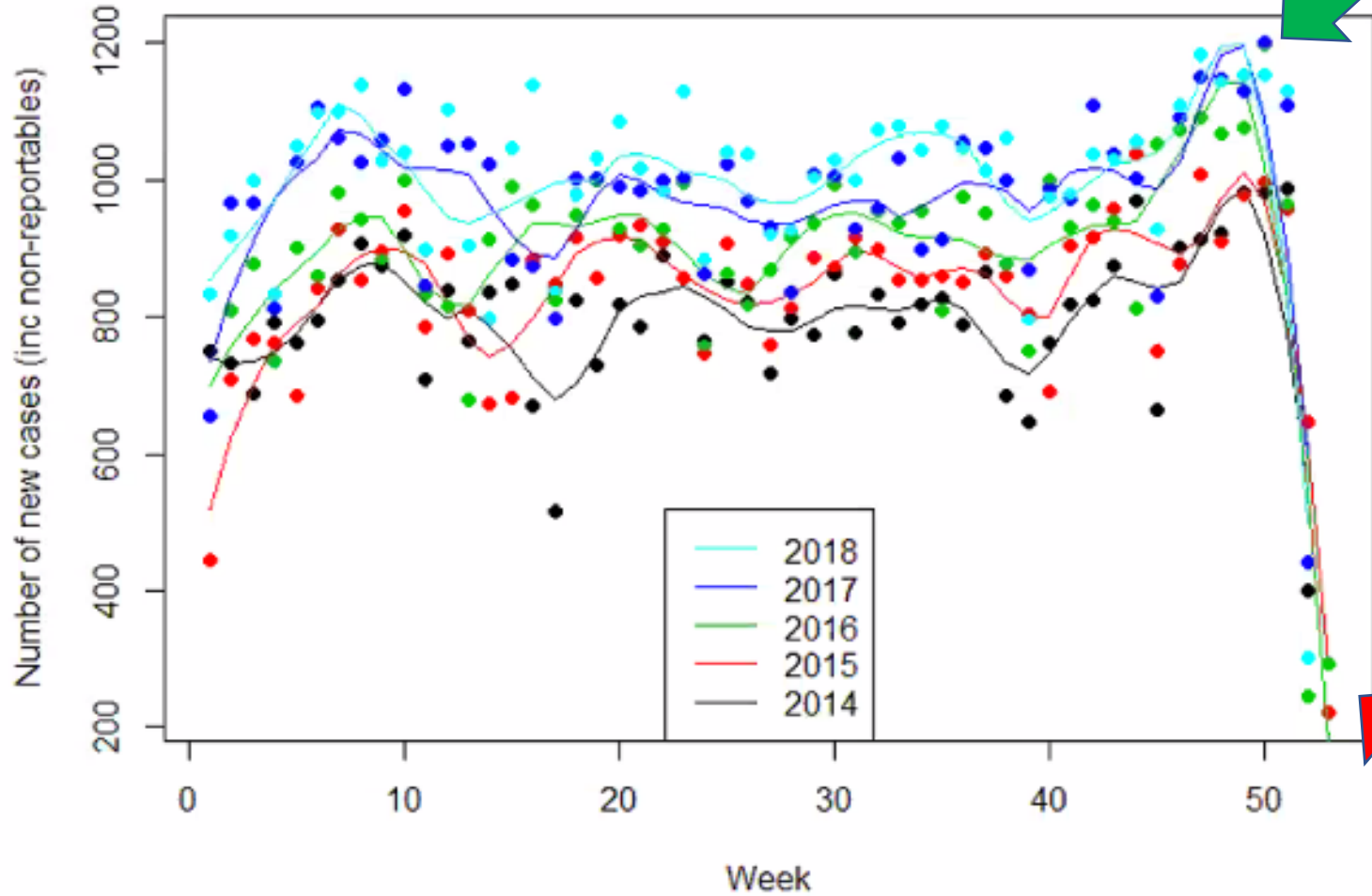


Patients screened for cervical cancer

2020, Gold Coast region, n=±80 practices



When do we screen?



For most patients

Please contact us on [REDACTED] to discuss updating your screening/recall information. Thanks, [REDACTED]

For new screening patients

Our records indicate we are yet to record your cervical screening result.

Cervical cancer is one of the most preventable cancers.

Routine screening is your best protection.

Women are due for their first cervical screening test from the age of 25 or 2 years from their last PAP test.

Simply book a "Cervical Screening" appointment by calling the practice on the phone number below.

If you have had your cervical screening performed elsewhere please call the clinic to advise us so we may remove you from future reminders.

Thanks



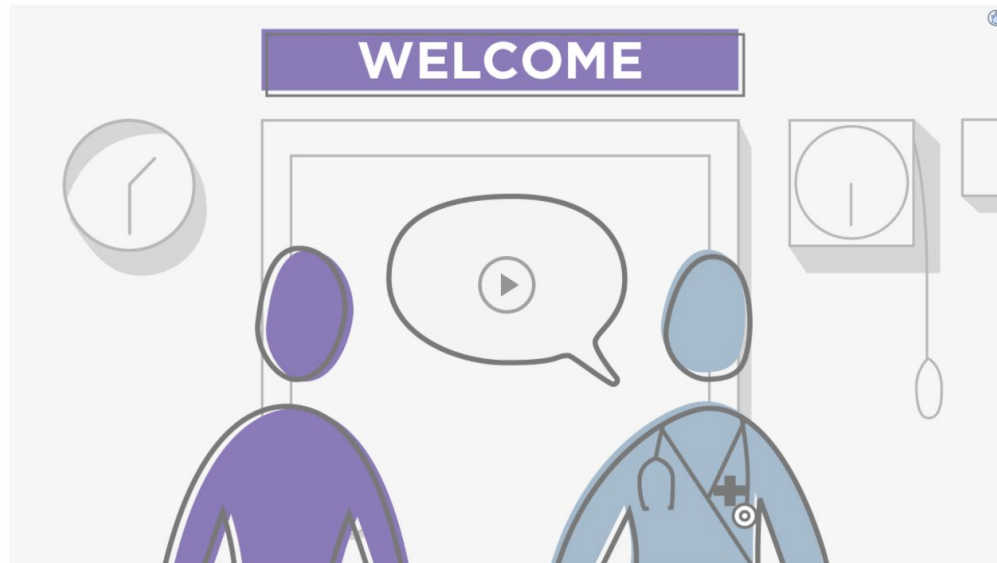
Cancer Screening Saves Lives

SEPTEMBER 2020 CAMPAIGN

USER GUIDE: HOW TO SUPPORT THE CAMPAIGN

Cervical Screening

National Cervical Screening Program (NCSP)



This is an interactive video. Press the play arrow to start. Navigate within the video to the topic you wish to know more about.

<http://cancerscreening.com.au/cervical/>

Healthcare Provider Register Access

> Accessing the National Register

Participant information for the National Cervical Screening Program (NCSP) and National Bowel Cancer Screening Program (NBCSP) can be accessed through:

> Healthcare Provider Portal

- the [Healthcare Provider Portal](#),
- your [integrated clinical software](#), or
- the [Contact Centre](#).

> Information payments

> Alternative Pathway Providers

Access can be provided to healthcare professionals with [either a Medicare Provider Number or a Register Identifier number](#).

> Patient privacy

> Quick start guides

> Forms and guidelines

> HPV positivity rates

> Return to Home

Healthcare Provider Portal

Previously, healthcare providers (e.g. general practitioners, nurses, and other specialists) had to call the National Cancer Screening Register, or the relevant pathology laboratory, to request patient information relating to bowel and cervical screening.

The **Healthcare Provider Portal**, provides a self-service alternative for health professionals to access and submit bowel and cervical screening data electronically in the National Cancer Screening Register.

To access the portal, you will need a PRODA account. PRODA (or Provider Digital Access) is an online identity verification and authentication system used to enable secure access to government online services.

For more information refer to the [Healthcare Provider Portal User Guide](#) or call **1800 627 701** and speak to a member of our Contact Centre.

**NEW
NORMAL**

The image shows the words "NEW NORMAL" constructed from wooden blocks. The word "NEW" is stacked on top of "NORMAL". The blocks are light-colored wood with black letters cut out. The background is a plain, light grey surface.

E-Path Monitoring Console: average daily notifications

(includes specimens received within 1 week of specimen taken date)

