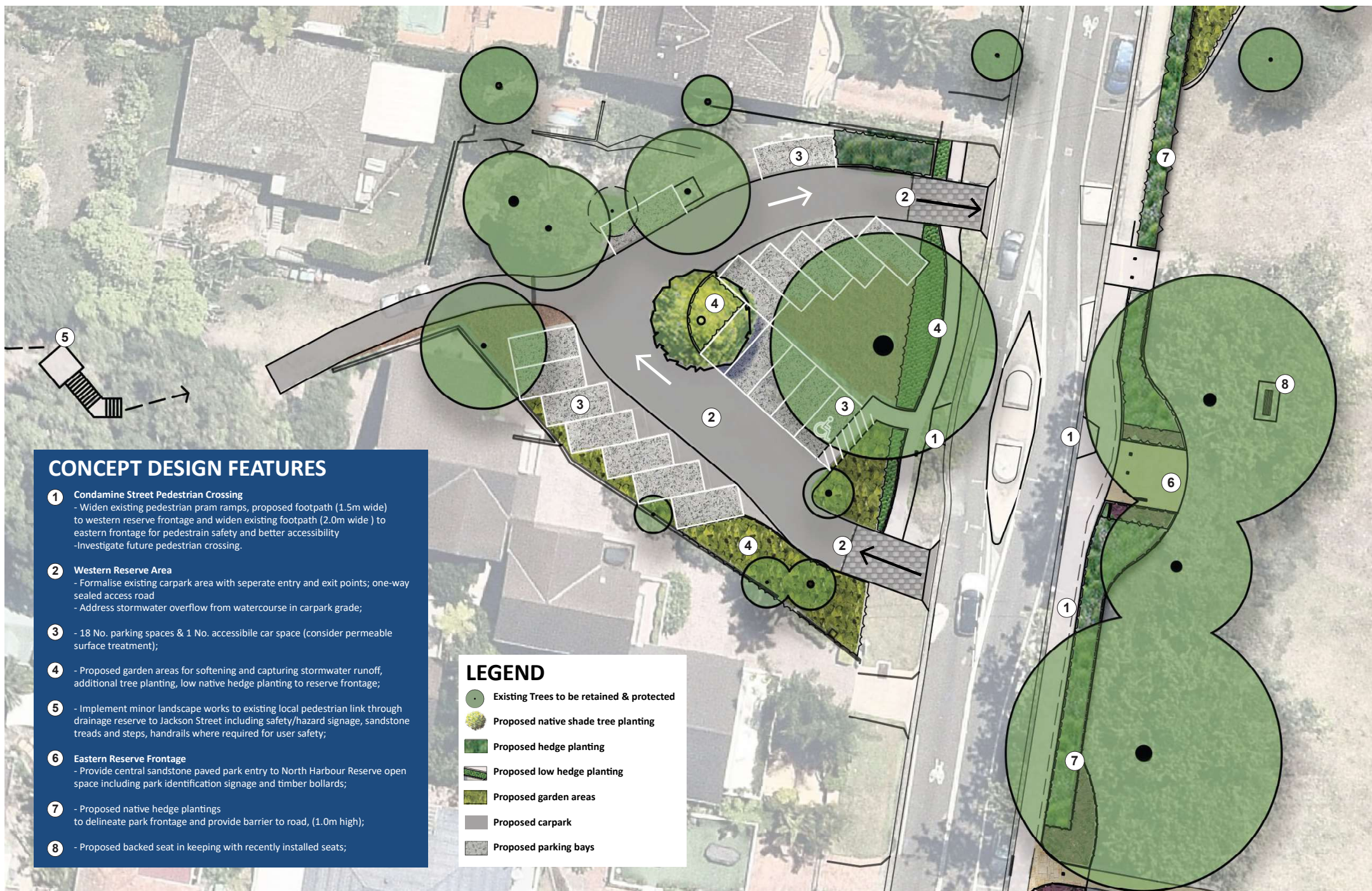


DESIGN OBJECTIVES

- Provide planning and design direction for implementing landscape improvements to existing park facilities that benefit the social and recreational needs of the community;
- Improvements aim to conserve and enhance the reserve's open space landscape character, highly valued for it's environmental, heritage, social and scenic qualities;
- Address pedestrian safety and provide better connectivity and accessibility to and within the reserve (where feasible);
- Improve the amenity and management of existing facilities that cater for the diverse range of active and passive recreation activities in this dog friendly reserve such as picnicking, walking, informal sport / fitness, childrens play etc;
- To protect and enhance the site's bushland areas and sandstone rock outcrops.












CONCEPT DESIGN FEATURES

- 1** **Condamine Street Pedestrian Crossing**
 - Widen existing pedestrian pram ramps, proposed footpath (1.5m wide) to western reserve frontage and widen existing footpath (2.0m wide) to eastern frontage for pedestrian safety and better accessibility
 - Investigate future pedestrian crossing.
- 2** **Western Reserve Area**
 - Formalise existing carpark area with seperate entry and exit points; one-way sealed access road
 - Address stormwater overflow from watercourse in carpark grade;
- 3**
 - 18 No. parking spaces & 1 No. accessible car space (consider permeable surface treatment);
- 4**
 - Proposed garden areas for softening and capturing stormwater runoff, additional tree planting, low native hedge planting to reserve frontage;
- 5**
 - Implement minor landscape works to existing local pedestrian link through drainage reserve to Jackson Street including safety/hazard signage, sandstone treads and steps, handrails where required for user safety;
- 6** **Eastern Reserve Frontage**
 - Provide central sandstone paved park entry to North Harbour Reserve open space including park identification signage and timber bollards;
- 7**
 - Proposed native hedge plantings to delineate park frontage and provide barrier to road, (1.0m high);
- 8**
 - Proposed backed seat in keeping with recently installed seats;

LEGEND

-  Existing Trees to be retained & protected
-  Proposed native shade tree planting
-  Proposed hedge planting
-  Proposed low hedge planting
-  Proposed garden areas
-  Proposed carpark
-  Proposed parking bays



CONCEPT DESIGN FEATURES

1 Manly Scenic Walkway Northern Entry

- Construct new widened coloured concrete entry path with Fibre Reinforced Plastic stair access (1.5 - 2m wide subject to detail design); including directional & regulatory signage

2 Picnic Facilities

- Reconfigure and upgrade existing picnic facilities including new table settings, BBQ (double hot-plate), bin station and sandstone seat walling;

3 - Proposed backed seat set in new garden area;

4 - Upgrade and relocate water tap with dog bowl to edge of new garden area away from food preparation facilities;

5 Viewing Space

- Proposed viewing / heritage interpretation space to recognise the site's significant history. To include sandstone flag paving & seat wall, relocating existing heritage plaque & plinth and incorporating Interpretation signage;

6 Main Grassed Open Space

- Undertake irrigation upgrade, minor works for addressing ponding & maintenance regime to aid upkeep of grassed areas



LEGEND

- Existing Trees to be retained & protected
- Proposed native shade tree planting
- Proposed garden areas
- Proposed coloured concrete
- Proposed sandstone flagging
- Fibre reinforced plastic decking
- Proposed picnic table settings
- Proposed curved timber seating
- Proposed BBQ / Bins